

Leonard-Leota Park history being showcased Aug. 27

Submitted by the Evansville Grove Society

The Evansville Grove Society is a volunteer-based organization devoted to offering history programs and creating

local museum exhibits that celebrate Evansville and the surrounding area.

The society is planning a follow-up event to last summer's highly successful one-day program, which featured America's

early love affair with the highway and cars. Hosted at Leonard-Leota Park, the educational program provided a wonderful overview of the development of a special road from Chicago to Yellowstone National Park via the Black Hills.

Called "The Black and Yellow Trail," this road became U.S. Highway 14, which travels right through Evansville. Evansville's citizens and business community saw the economic potential when they witnessed tourists stopping in 1883 at Leonard Park, looking for campsites.

In 1923, the park was enlarged when Lake Leota Park was added to Leonard Park, and a Tourist Camp was developed. The entertaining guest speaker for "America Loves to Travel," Daniel Stephans, regaled the attentive audience with personal anecdotes of his exploration of tourist camps remaining along the Black and Yellow Trail.

This year's follow-up event is being planned for Sunday afternoon, Aug. 27, 2017, at the same location: Horse Barn Shelter (at the far end of the soccer field) of Leonard-Leota Park, Evansville. The featured topic will be the history and development of the community's historic and beloved Leonard-Leota Park. Among the subjects that will be addressed are the early structures and buildings

built by men whose salaries were paid by federal grants during the Depression.

Daniel Stephans returns as guest speaker, along with Timothy Heggland. Stephans is a noted cultural architect conservationist. Heggland is an architectural historian with the Wisconsin Historical Society.

Leonard-Leota Park was listed on the State and National Registers of Historic Places as a Historic District in January 2011. Timothy Heggland prepared the nomination paperwork for the park to become a historic district, and Daniel Stephans was a member of the Wisconsin Historic Preservation Review Board, which approved the nomination of the Leonard-Leota Park to be listed as a historic district. The district includes 29 contributing buildings, sites, structures and objects with 11 noncontributing buildings and structures. We hope you will mark your calendar for 1 p.m., Sunday, Aug. 27, at Leonard-Leota Park, to enjoy this special program, "Leonard-Leota Park, Evansville's Place to Be."

Two additional opportunities will be available Aug. 27. The Baker Building, which is the museum that houses the exhibits for the Evansville Grove Society, will be open for touring, as will the Antes Tourist Cabin. The cabin is the last remaining tourist cabin, in use approximately from

the 1930s to the 1940s. Both buildings are located at the entrance to Leonard-Leota Park, and will be open from 11 a.m. to 1 p.m., closed during the program, and open again from 3 p.m. to 5 p.m. In these buildings, you will find exhibits featuring many photographs

and artifacts from Evansville's past.

Ancillary activities are being planned to supplement the presentation, but were not solidified at press time. Contact Jennifer Ehle, jenniferehle1@gmail.com, for updated information about the event.

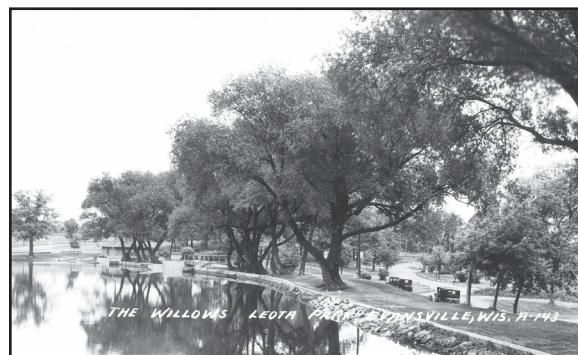


World War I exhibit opens

More than 122,000 Wisconsin men and women served on land, sea and in the air during World War I. The Wisconsin Veterans Museum marks the centennial of the war with the opening of a major exhibit featuring an up close and personal look at the Great War through the eyes of Wisconsin veterans. "WWI Beyond the Trenches: Stories from the Front" uses the museum's rich collection and first-person accounts to bring to life Wisconsin's role in shaping global history. Admission is free to the museum, which is located at 30 W. Mifflin St. Hours are Tuesday through Saturday, 9 a.m. to 4:30 p.m. daily and Sundays from April through September from noon-4 p.m. (Photo courtesy of the Wisconsin Veterans Museum)



Ethel Gibbs, Evansville's famed artist, painted four of these signs, which were placed at the various entrances to Evansville. The signs guided people to Leonard-Leota Park and encouraged them to enjoy its many activities. (Photo courtesy of the Evansville Grove Society)



This postcard shows the eastern shore of Lake Leota with its stone embankments, historic cars and the bath house. Visitors to the park today will see a similar view except for the historic cars. (Photo courtesy of the Evansville Grove Society)



Welcome to MADISON

Madison Originals is an association of independently owned restaurants and affiliated businesses in the Madison, Wisconsin area. *Our mission is to promote our community's local, unique, independent dining establishments.*

WE ARE ALL ABOUT LOCAL FLAVOR!

A Pig in a Fur Coat

Banzo

Bonfyre American Grille

Brasserie V

Captain Bill's

Charlie's on Main

CIRC

Club Tavern

Coachman's Golf Resort

Cow & Quince

Crema Cafe

Daisy Cafe & Cupcakery

Delaney's Charcoal Steaks

Dobhan Restaurant

Dotty Dumpling's Dowry

Ella's Deli and Ice Cream Parlor

Essen Haus

Fit Fresh Cuisine

Harvest

Ian's Pizza by the Slice

Imperial Garden West

Jacs Dining and Tap House

Liliana's Restaurant

Lombardino's Italian Restaurant

Manna Cafe and Bakery

Mariner's Inn

Nau-Ti-Gal

Nitty Gritty-Downtown

Nitty Gritty-Middleton

Nitty Gritty-Sun Prairie

The Old Fashioned

Old Feed Mill

Paisan's Restaurant

Pizza Brutta

Porta Bella Restaurant

Quivey's Grove

The Roman Candle East

Ther Roman Candle Fitchburg

The Roman Candle Middleton

The Roman Candle

Short Stack Eatery

Smoky's Club

Sprecher's Restaurant and Pub

Tipsy Cow

Tarnado Club Steak House

The Wonder Bar

Wisconsin Brewing Tap Haus

www.madisonoriginals.com

