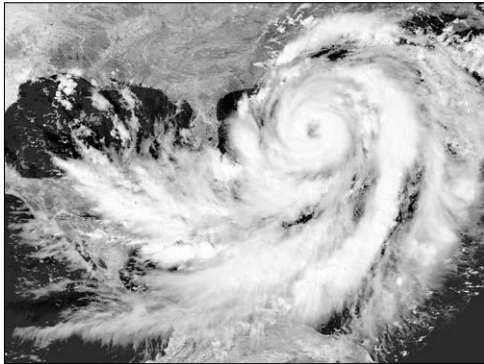


# Do you have an emergency evacuation plan ready?

## ALABAMA COOPERATIVE EXTENSION SYSTEM

**Voluntary Evacuation.** A warning to persons within a designated area that a threat to life and property exists or is likely to exist in the immediate future. Individuals issued this type of warning or order are not required to evacuate, but it would be to their advantage to do so.

**Mandatory or Directed Evacuation.** A warning to persons within the designated area that an imminent threat to life and property exists and individuals must evacuate in accordance with the instructions of local officials.



One factor to consider when deciding whether to evacuate is the type of disaster or emergency. Some emergencies allow you time to prepare (such as hurricanes or winter storms); others can come upon you quickly (such as flooding, wildfires, or tornadoes).

If you live in a flood-prone area, it's best to evacuate during the voluntary phase so you will have enough time to move. Flood waters rise suddenly and trap you, making it difficult or impossible to leave at a later time.

If you will need assistance in moving the individual you care for, it's best to plan early and move early. If you wait too late to evacuate, you may not be able to find friends or neighbors to help you.

If you choose not to evacuate during the voluntary phase, it is imperative that you monitor the emergency situation closely.

Whatever you decide, it is extremely important to have an evacuation plan.



Know where to go. If you are ordered to evacuate, know the local hurricane evacuation route(s) to take and have a plan for where you can stay. Contact your local emergency management agency for more information. Put together a go-bag: disaster supply kit, including a flashlight, batteries, cash, first aid supplies, medications, and copies of your critical information if you need to evacuate. If you are not in an area that is advised to evacuate and you decide to stay in your home, plan for adequate supplies in case you lose power and water for several days and you are not able to leave due to flooding or blocked roads. Make a family emergency communication plan. Many communities have text or email alerting systems for emergency notifications. To find out what alerts are available in your area, search the Internet with your town, city, or county name and the word "alerts."

## Signarama™

The way to grow your business.

- Banners
- Magnetics
- Vehicles
- Yard Signs
- Digital
- Outdoor
- Indoor
- More...

signarama-mobile.com  
251.634.0100

## E-Z INSURANCE

Agency, LLC



Leah

Haley

Trish

7875 Moffett Rd. Suite B  
Semmes, AL 36575

Ph. (251) 645-RATE | Fx. (251) 308-1956  
(7283)

HOME • AUTO • BUSINESS • COMMERCIAL

info@ezinsurancellc.com

"LOW MONTHLY PAYMENTS"