

All Contest Horse Show



A National Barrel Horse Association sanctioned All Contest Horse Show will be part of the activities at the Spencer County 4-H Fair on Saturday, June 23.

Exhibitions begin at 4 p.m., with the show at 6 p.m. There will be a \$5 office charge per horse, and a \$5 gate fee for all vehicles. There will be no refunds unless the show is canceled.

The Association plans \$1,000 in added money; the contests will feature an 80% payback, as long as at least 15 horses are entered in each class.

Classes and fees are as follows:

Warm Up Barrels, \$5 (pay at gate).

Warm Up Poles, \$5 (pay at gate).

Peewee Poles, \$5 (10 and under).

Youth 3D Poles, \$12 (\$50 added).

Open 3D Poles, \$25 (\$250 added).

Peewee Barrels, \$5 (10 and under).

Open 3D Barrels, \$28 (\$500 added).

Youth 3D Barrels, \$13 (\$200 added).

Senior 3D Barrels, \$13.

Since the fair will be in progress, no stalls will be available. No alcohol is allowed on the grounds and all dogs must be on leashes.

All riders participate at their own risk.

For more info, contact Kent Burns at 812-719-1688 or Kevin Burns at 812-608-1620.



TELL CITY TIRE FOR ALL YOUR TIRE NEEDS.

- Family Car • Garden Tractor
- Pick Up Truck • Large Truck
- Tractor • Industrial

On Site Farm Service Service Department

Alignments,
Shocks, Struts,
Brakes & Oil
Changes



TELL CITY TIRE

1438 Main

Hours: Weekdays 8 a.m.-5 p.m.; Sat. 8-12

812-547-4511

JULIE E. SCHMITT

Tax & Accounting Service

312 Main Street, Rockport, IN 47635

812-649-9770

Email: julieschmitt@att.net

Fax: 812-649-9775

Good Luck to All Participating

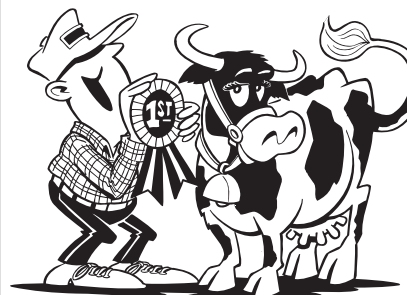
4-H Members



Mutual Home Insurance Agency

Affiliated with Indiana Farmers

Farm • Auto • Home • Commercial



*4-H'ers are the
leaders of tomorrow!*

102 Liberty Building
Santa Claus, IN 47579
(812) 937-2282

Building Bright Futures



JASPER GO!
ENGINES & TRANSMISSIONS
100% Associate Owned

815 Wernsing Road
Jasper

812-482-1041

www.jasperengines.com

*We're Proud of the Achievements
of 4-H Members!*



**THERMWOOD
CORPORATION**

Dale • 812-937-4476