

Coachman's Golf Resort offers picturesque package

Revised from previous Lakes Edition

Well known for its exceptional courses and amenities, Coachman's Golf Resort has served the Edgerton/Stoughton area for 56 years.

It features 27 holes of championship golf, an excellent supper club, and spacious guest rooms. Whether you are looking to play 9 or 18 holes, planning a weekend getaway, or hosting a family event or a company outing, Coachman's has the right options for you.

"Our bread and butter is our golf packages," said

manager Theresa Johnson, "so we try to offer as much variety as we can."

Coachman's destination packages are very popular with overnight guests. The packages include lodging, meals and greens fees.

Rolling hills and tall trees compliment sand and water hazards on the Coachman's course, presenting an enjoyable and challenging layout for all skill levels. Many of the resort's guests come from the Chicago area, yet Iowa, Michigan and Minnesota are well represented.

Coachman's features

a brand new, multi-season outdoor event venue that combines the best part of the property's space with protection from the elements.

"We have a wedding for 200 tomorrow," Johnson remarked on a beautiful late spring day, pointing to the rows of white chairs dotting the picturesque fairway.

As a wedding venue the resort is able to elegantly accommodate gatherings up to 400 people.

The food at Coachman's Supper Club rounds out the resort's trifecta. A warm atmosphere greets you for the Friday Fish Fry, Saturday Prime Rib and Sunday brunch. Day or night you will find a favorite dish on

the menu alongside Midwest and continental fare. Coachman's lounge, meanwhile, offers a full bar and tap selection with an excellent wine list.

Coachman's is a south central Wisconsin institution and appreciates all the support from members, families and friends from the surrounding communities. To show that ap-

preciation, the resort hosts many local gatherings and charitable events. The second generation, family-owned business is open seasonally, generally from March to December each year. Located right off Interstate 39/90 (Exit 156) between Edgerton and Stoughton at Highway 51, it's an easy drive from wherever you are.



Coachman's offers 27 holes of scenic, championship golf. (Submitted photo)

Lakes of Dane County Lake Kegonsa

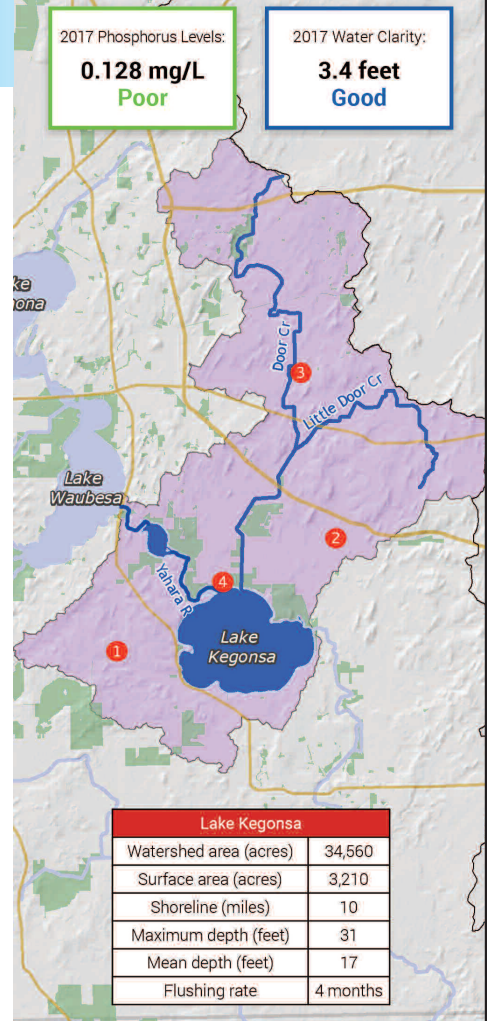
Lake Kegonsa is the lowest and fourth lake in the Yahara chain and is surrounded primarily by agricultural land. Most of the phosphorus in Lake Kegonsa comes from the upper lakes in the chain via the Yahara River, although a significant amount comes from the large Door Creek watershed. Door Creek drains thirty square miles of land before meeting Lake Kegonsa. Large sections of the stream have been straightened and ditched for agriculture and urban development.

The following projects reported by partners in 2017 will help us meet our Yahara CLEAN water quality goals for Kegonsa:

Friends of Lake Kegonsa volunteers collected fall leaves from 550 homes around the lake through pilot programs with the Town of Dunn (1) and Pleasant Springs (2), and additional support from Yahara WINS. When the delivery of the Town of Dunn's new vacuum truck was delayed, the City of Stoughton generously loaned equipment to be used over the weekends.

Dane County has selected Door Creek as a target area for water quality improvements and is working with landowners to install management practices. Through its Harvestable Buffer Program, Dane County has funded the installation of over six miles of buffers between agricultural fields and Door Creek to filter runoff (3).

The City of Stoughton provided a grant to Friends of Lake Kegonsa to help fund the group's work to improve water quality in the lake, including a demonstration shoreline garden at Fish Camp County Park (4).



We're Here For You



**The Care You Need
Provided By
Board Certified Emergency Physicians**

Stoughton Hospital Emergency & Urgent Care
900 Ridge Street - Stoughton
Emergency Care 24/7
Urgent Care
6 a.m. - 11 p.m. daily
608-873-6611

Stoughton Hospital Urgent Care - Oregon
990 Janesville Street - Oregon
Monday - Friday 5 p.m. - 10 p.m.
Saturday & Sunday Noon to 10 p.m.
608-835-5373



Ask for **Stoughton Hospital, NEW SPACE**, same **EXCELLENT** service!