

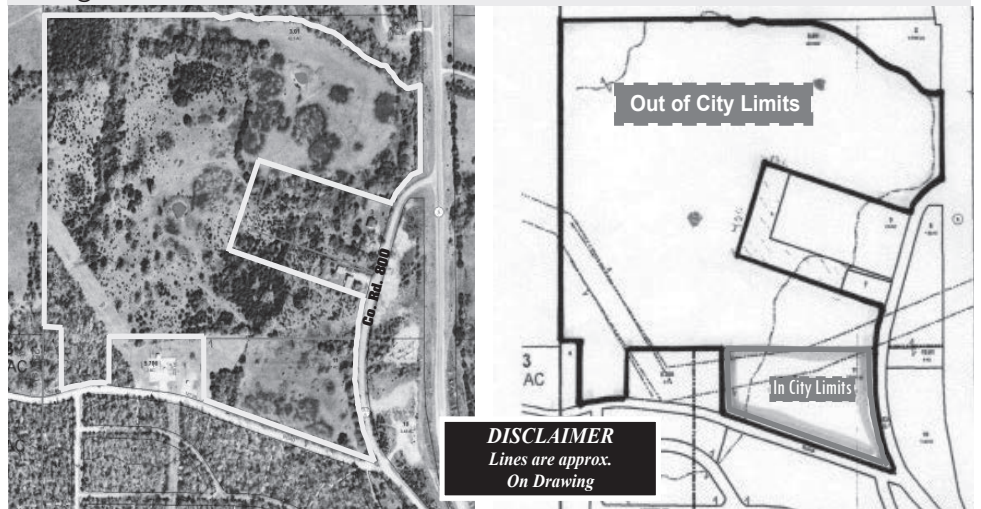
# REAL ESTATE AUCTION

RAIN OR SHINE

## 44.98 AC. +/- Sat., October 20 • 9:00 am

Location: GAINESVILLE, MO  
 Directions: Courthouse square, west side at the Gazebo. Follow Haskins Auctions signs.  
**Estate of Charles E. Luna**  
**Melinda Abraham, Personal Representative**

This is the last parcel of real estate of the Charles E. Luna Estate consisting of 44.98 ac +/- located at Gainesville. It consists of both mixed hardwood timber and cedar with open pastures. It fronts both Hwy. 5, old Hwy 5 (Co. Rd. 800) and Co. Rd. 804. Approx. 5.7 ac +/- is in the city limits, with the balance 39.28 ac +/- outside the city limits. There is power easements through the property. The taxes are approx. \$25.00 per year. The property is located on the west side of Co. Rd. 800, and the Senior Citizens building being on the east side. This property sells according to the new survey legal description. *This property shown by appointment only by calling David Haskins @ 417-257-4446.*



**Terms and conditions of the sale are:** Ten percent (10%) down on the day of auction. Balance due in full the day of closing. Sale of this real estate shall not be contingent upon any financing, appraisal, sale of other property, inspection or otherwise by the buyer(s) and that they understand that this real estate is being sold in an "AS-IS" condition, without any warranties or guarantees as to its condition of any kind, expressed or implied. Buyer(s) understand and agrees that the personal representative and auctioneer makes no claim(s) as to exact boundaries, corners, and fences are not on the line, and must satisfy themselves as to such. Closing cost such as (closing fee, title search-examination, attorney fees, title insurance, title service charge, and recording fee) shall be split equally between buyer(s) and seller(s). Taxes will be prorated, and surveying, if any, shall be paid by the buyer(s). Commission is to be paid by the seller(s). The sale is contingent upon approval of the Probate Court of Ozark County, MO.

**AUCTIONEER'S NOTE:**  
 Many possibilities with this property to build homes or hunting, as there is wildlife abundant. Close to retail stores, post office, and paved road frontage for a subdivision. See you Saturday. *Thanks David*

REAL ESTATE • ESTATE • FARM & BUSINESS LIQUIDATIONS  
 MO Lic. 0112 AR Lic. 1059

**David HASKINS AUCTIONS**

call 417-257-4446 :: Gainesville, MO :: 417-679-4997  
 www.haskinsauctions.com • email: info@haskinsauctions.com

TERMS: Cash or approved check. Conditions: I.D. required to register, items sold as is, no warranty. Nothing loaded or removed until paid for in full. Announcements made day of sale take precedence over any printed material. Auction service, employees, and/or owners are not responsible for accidents.  
 •BUYERS ARE ENCOURAGED TO ALWAYS INSPECT MERCHANDISE PRIOR TO BIDDING•



For sale, 2011 Chevy Aveo, victory red, original owner, excellent condition, 42 mpg! Just serviced and detailed, have receipts, \$4250 obo. 417-270-0579; 417-270-0578  
 Alton 41pb

### Autos

2008 Ford Fusion, 4 door, 4 cyl., aluminum wheels, \$4995; 2012 Malibu, 4 door, 4 cyl., high miles but runs good, \$6250; 2013 Nissan Altima SV, 4 cyl., auto, aluminum wheels, 63xxx miles, \$6995; 2015 Nissan Versa Note SV, 4 cyl., auto, hatchback, 1 owner, 51xxx miles, \$8250; 1998 Pontiac Trans Am, V-8, auto, T-tops, leather, white, 99,xxx miles, \$7450; 1997 Mercedes SL 500 Sport hardtop convertible, maroon, \$4995; 2011 Chevy Malibu, 4 cyl., auto, dark blue, 137xxx miles, \$7250; 2010 Impala LT, V6, automatic, aluminum wheels, 82xxx miles, white, \$8450.  
 417-938-4252  
 Myrtle 41c  
 1995 Toyota Corolla, 4 door, 5 speed manual, reliable transportation, very good gas mileage, \$1500.  
 417-505-0571  
 West Plains 41p

### 1987 Pete

1987 - 379 Pete, has 400 big cam Cummins, 9 speed transmission, 373 gear ratio, \$14,000; 963 Cat crawler, \$18,000; Bell Ultra T Feller buncher, in good shape, new tires, \$22,500.  
 417-252-0268  
 Willow Springs 41-42p

### Truck Boxes

8x16 truck box with roll-up door, good for storage, \$1250 obo. 417-247-7902  
 Birch Tree 41-42p

### Auto Glass

BROKEN WINDSHIELD? We come to you! 30 years experience. Call Michael Jones, owner of Mobile Auto Glass!  
 417-254-1090  
 Cabool 37tfc

### Used Vehicles

RHOADES MOTOR COMPANY  
 2003 Chevrolet Silverado 1500 HD, \$9950  
 2007 Chevrolet Trailblazer LS, \$6950  
 2006 Honda Ridgeline RTS, \$7950  
 1997 Ford Ranger extended cab, 5 speed, \$1950  
 2005 Chevrolet Malibu, \$3950  
 2007 Pontiac G6, \$4950  
 2007 Cobalt LT, \$3500  
 2007 Chrysler Sebring, \$3500  
 2006 Hyundai Tivuron, \$2500  
 2003 Ford Mustang GT, convertible, \$3950  
 1997 Ford Mustang, convertible GT, 58,211 miles! \$4950  
 2004 Ford F-150 XLT, \$4950  
 2010 Chevy Cobalt, \$3950  
 2013 Chrysler 200, \$4950  
 2004 Ford Ranger, \$2950  
 2008 Toyota Sienna XLT, \$3250  
 2007 Chevrolet Silverado 1500, \$3500  
 2005 Chevrolet Tahoe, \$4950  
 2005 Dodge Durango, \$2450  
 2005 Dodge Durango, \$2500  
 2006 Honda Odyssey EXL, \$2450  
 2007 Nissan Murano SL, \$4000  
 2007 Pontiac Grand Prix, \$2500  
 417-264-2995, 417-280-6944  
 Thayer 41p

**6 Year Powertrain Warranty!**

**Kubota 0% FOR 60 MONTHS**  
 On Select New Kubota Tractors\*  
 See Us For ALL Your Package Deals!!

**L2501 DT Package Deal**

**25 HP\*\*\* Diesel, 4WD, Ag Tires**  
 18' Trailer, 5' Box Blade  
 Kubota Loader, 5' Land Pride Brushhog

**Sale Price \$20,495**

**0 Down 0% APR Financing For 60 Months\***  
 On Orange Plus Tractor Package Deals

**EDGELLER AND HARPER FARM EQUIPMENT**

Get Unmatched Kubota Quality!  
 Kubota Designed, Engineered & Built.  
 Visit Us In TWO Locations!

8665 Outer Road • Mtn Grove  
 417-926-5454 • 877-926-5458  
 4973 W. US Hwy 160 • West Plains  
 417-256-0420 • 800-766-0420

**25 HP\*\*\* Diesel, 4WD, Ag Tires**  
 18' Trailer, 5' Box Blade  
 Kubota Loader, 5' Land Pride Brushhog

\* \$0 Down, 0% A.P.R. for 60 months. Qualifying Equipment: BX, B, L, MX and M, MH(M7), RB, DMC, DM, RA and TE Series. \$0 Down, 0% A.P.R. financing for up to 60 months on purchases of select new Kubota L2501 equipment from participating dealers' in-stock inventory is available to qualified purchasers through Kubota Credit Corporation, U.S.A.; subject to credit approval. Some exceptions apply. Example: 60 monthly payments of \$16.67 per \$1,000 financed. Offer expires 12/31/18. See us or go to KubotaUSA.com for more information. \*\* Six-Year Warranty: Only terms and conditions of Kubota's standard Limited Warranty apply. For warranty terms, see us or go to KubotaUSA.com. \*\*\* For complete warranty, safety and product information, consult your local Kubota dealer and the product operator's manual. Power (HP/KW) and other specifications are based on various standards or recommended practices.