

# OUTSTANDING ALL DAY PUBLIC AUCTION

ANTIQUES • GLASSWARE • FARM TRACTORS • MACHINERY • SAW MILL EQUIPMENT • TRUCKS • TRAILERS

## SATURDAY, OCTOBER 13, 2018 • 10:00 A.M.

**LOCATION:** FROM MT. VIEW, MO. NORTH ON HWY 17 APPROX 7 MILES OR FROM SUMMERSVILLE, MO. SOUTH ON 17 APPROX 7 MILES ON 17 (MILL IS EAST ON J&L LANE ACROSS FROM PINE CREST STORE) 1766 ST. RT. 17, SUMMERSVILLE MO. WATCH FOR GARY SEXTON AUCTION SIGNS.

## ANTIQUES - GLASSWARE - HOUSEHOLD



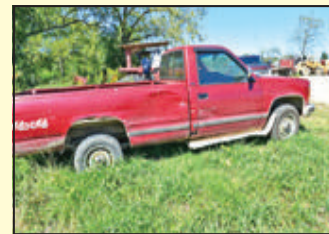
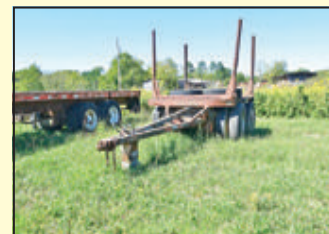
FIRE KING, MCCOY, JADEITE, HOMER LAUGHLIN, GRANITE, MILK GLASS, STONEWARE, LOTS OF CORNING WARE, HOBNAIL, FIESTA, TUPPERWARE, ANTIQUE GLASS, ROCKWELL, CARNIVAL, OLD BOTTLES, COLLECTIBLES, FIGURINES, WHAT NOTS, CHEST FREEZER, MAYTAG REFRIGERATOR, WHIRLPOOL WASHER-DRYER, MICROWAVE, 50'S CHROME DINETTE SET, OLD TRUNK, GAL. TUB, CEDAR BEDROOM SET, CHEST OF DRAWERS/DRESSERS, OLD SCHOOL DESK, OLD METAL BED, CREAM CANS, OLD LICENSE PLATES, CLOCKS, LIVING ROOM FURNITURE, ANTIQUE FURNITURE, WALL DECOR, OLD METAL LAWN CHAIRS, BOXES FULL OF ITEMS! OLD CROSS CUTS, ALUM. BARKER / MAN SAW, OLD FISH RODS, HOUSEHOLD SUPPLIES OF ALL KINDS, ODD ANTIQUES, 2 GENERATIONS OF FAMILY KEEP SAKES!



## FOREST PRODUCTS MILL & FARM MACHINERY



920 CATERPILLAR LOADER / RUNS GOOD, 440 B JOHN DEERE LOGGING SKIDDER, 3 DORSEY FLATBED SEMI - FLATBED TRAILERS / 40 & 45'S, 30' FRUEHAUF FLAT BED, LOGGING PUP TRAILER, CHERRY PICKER LOADER, LOG BUNKS, 1980'S IH LOG TRUCK. 1987 INTERNATIONAL SEMI TRUCK, 671 & 238 POWER UNITS, APPROX. 1250' WALNUT LUMBER, MILL BLADES, STIHL CHAIN SAW, LOW BOY TRAILER, 1985 BRIGADIER DUMPTRUCK - (NEEDS FUEL PUMP) 6V-92; 1991 GMC 4X4 PICKUP, 5-OLD POWER UNITS. **FARM EQUIPMENT:** VERMEER 10' NO TILL DRILL GD107, 1970'S CHEVY C-70 FERTILIZER TRUCK, 1586 IH CAB TRACTOR WITH FRONT LOADER, DUALS CAB/160 H.P., 300 IH GAS TRACTOR, SUPER© FARMALL WITH HYDRAULICS, 884 IH TRACTOR WITH LOADER, 756 FARMALL TRACTOR WITH LOADER, 70HP, 2-656 IH TRACTORS WITH LOADER, SUPER C FARMALL FRONT LOADER, A-GLEANER COMBINE #A 37904, 742 OFF SET DISC, 2-411 NEW HOLLAND DISC BINES, 163 N. HOLLAND HAY TEDDER, VICON 8 WHEEL RAKE/HYD., 605 F VERMEER ROUND BALER, 2-352 AVCO NEW IDEA MANURE SPREADERS, SIDE WINDER BRUSH HOG, HOWSE 10' BRUSH HOG, DANUSER POST DRIVER, GOOSENECK STOCK TRAILER 20', TRAILER HYD. DUMP, FUEL TANKS, HORSE DRAWN EQUIPMENT, CATTLE FEEDERS, BALE RINGS, 1995 GMC JIMMY SL5, BALE UNROLLER, MULLER 10' METAL LATHE, AXLES, YAMAHA 4 WHEELER, WELDERS, COMPRESSORS, TORCH SETS, CANOE & TRAILER, 12' FLAT BOAT, TRAILER & BOAT, LOWE LINE 16' FLAT BOTTOM BOAT - 35HP EVINRUDE, 27 - TON TROYBILT MOBILE SPLITTER/NICE, TROYBILT RIDING MOWER, OLD ANVILL, TOOLS OF ALL KINDS, SHOP WOOD WORKING TOOLS, SCRAP IRON, GARDEN TOOLS, MECHANICS TOOLS, WALL FULL OF V-BELTS, ALUM. RAMPS, TIRES-TRUCK WHEELS, SLIDE-IN CAMPER.



**AUCTIONEERS NOTES:** GIGANTIC HOUSEHOLD AND FOREST PRODUCT - MILL & FARM EQUIPMENT AUCTION! HOUSEHOLD STARTS AT 10:00AM; MILL & FARM EQUIPMENT AT APPROX 1:00PM. THANKS FOR ATTENDING.

**LUNCH SERVED DAY OF AUCTION**



## OWNERS, THE ESTATE OF CW "BILL" & JONA ROARK & BILL ROARK FOREST PRODUCTS

*Serving Howell, Oregon & Ozark Counties Since 1978*

# SGary Sexton

Auctioneers, LLC

## www.garysexton.com

West Plains, Mo. 417-255-7001

Gene Summers, Auctioneer 417-293-2757

Tyler Sexton, Auctioneer 314-529-0124

AR Broker #PB00043890

AR License #1568



E-mail: gary@garysexton.com

All announcements made day of sale supersede any written material. Not responsible for lost or stolen property or accidents.