



Continued from Page 5B

Malachi Graham is a senior safety with a lot of experience coming back. Aycock says Graham's experience and intellect helps him be the guy on the defensive side to make sure everyone

is lined up correctly. He plays strong safety, but routinely moves up near the line of scrimmage and plays like an additional linebacker.

Two more seniors are also

back in the mix in the secondary. Aycock said Gary Hawthorn made great strides in the offseason and is expected to have a big year for the Cats. Kade Kitrell is also returning after

recording four interceptions and five fumble recoveries as a junior. Junior De'andre Grice played a good bit last year, particularly late in the season, and will be a big part of the GCHS second-

ary this year. "Defensively we feel like we have something to prove every week," Aycock said. "We have a tougher schedule this year that will challenge us early in the season,

but that's what we want." "Our philosophy, defensively, is that we want to bring more energy than our opponents every snap. Our goal is to play smart, fast and physical every down."

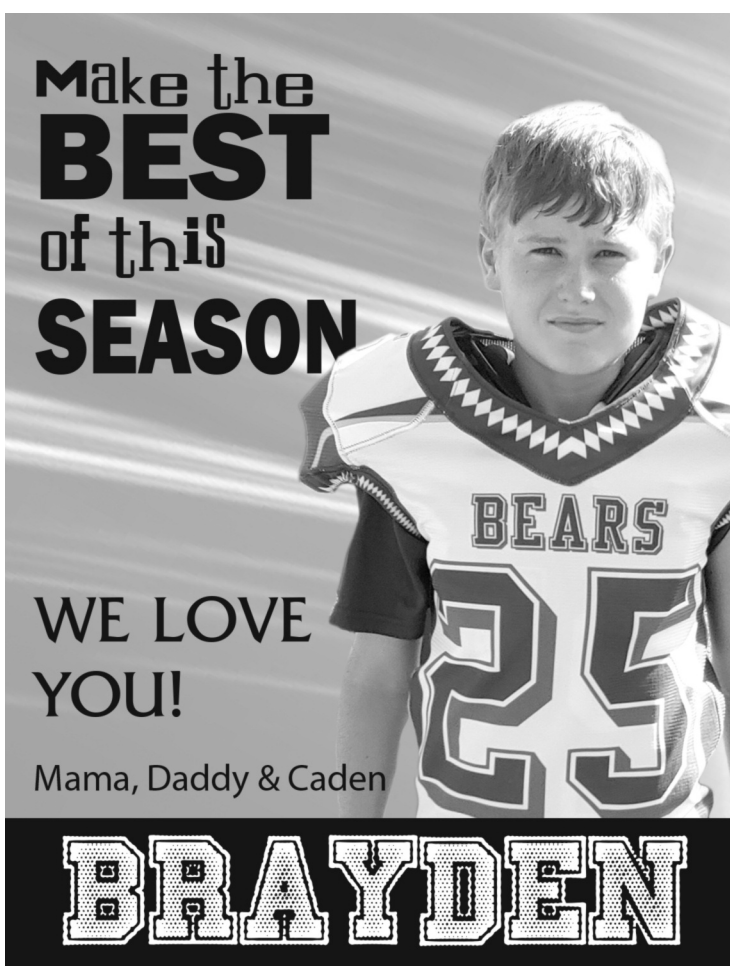
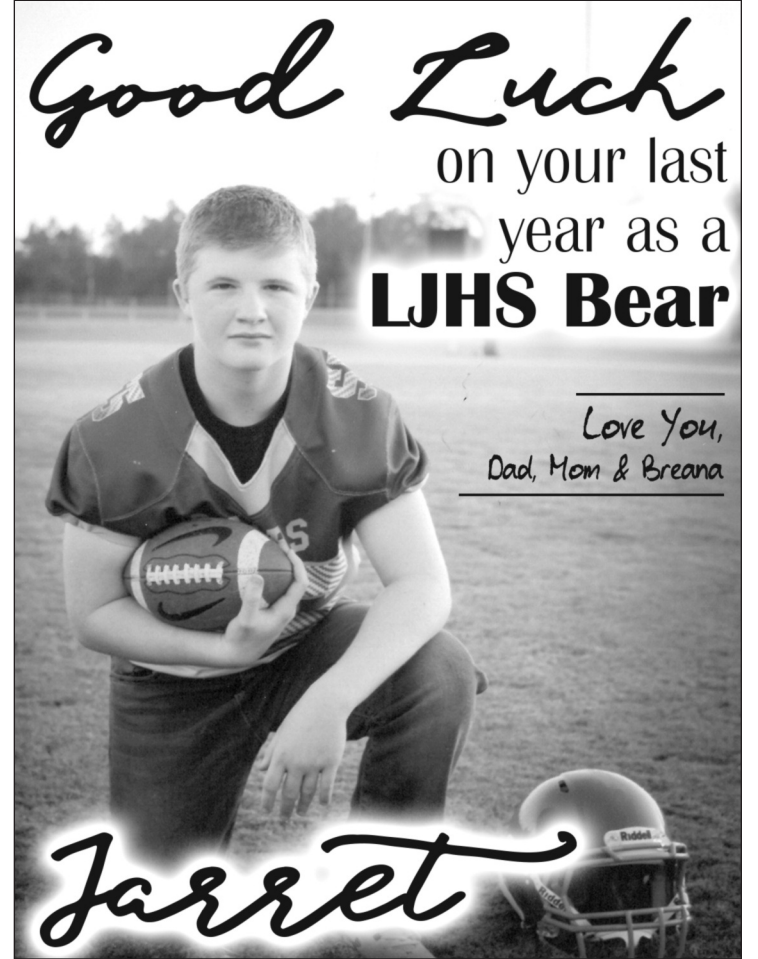


Photo by Shelley Mitchell / Herald Contributor



Photo by Randy Whitley and Shelley Mitchell / Herald Contributors

Senior safety Malachi Graham is shown (Above) causing a fumble during the Cats' scrimmage with VanCleave earlier this month. The Wildcats have a standard of wanting to be physical and bring more energy than their opponents on each play. A group of young defenders are shown doing just that (Inset) against Biloxi.



It's Great To Be A GCHS WILDCAT

Chancery Clerk's Office Michelle D. Eubanks Chancery Clerk Patti Zehner & Artensie Edwards Deputy Clerks	Circuit Clerk's Office Cecelia Bounds Circuit Clerk Michelle Benjamin & Renee Green Deputy Clerks	Tax Assessor/Collector Mark Holder Tax Assessor Vonda Mathews, Tammy Kittrell & Lannie Hesson Deputy Clerks
Greene County Sheriff's Office Sheriff Stanley McLeod and Staff	Greene County Waste System Stanley Mathis Operations Manager and Staff	Greene County Board of Supervisors Office Lavon Pringle - Payroll/Purchasing Tyson Moreno - Comptroller Angela Pearce - Receiving
Greene County Board of Supervisors District One Gary L. Dearman Supervisor	Greene County Board of Supervisors District Two Morris Hill Supervisor	Greene County Board of Supervisors District Three Jerry C. Mills Supervisor
Greene County Board of Supervisors District Four Wayne Barrow Supervisor	Greene County Board of Supervisors District Five Harold Cook Supervisor	Justice Court Jeff Byrd - Judge Post One L. Joe Beard - Judge Post Two Victoria Moss & Brenda Moreno Clerks of the Court
Greene County Coroner's Office Ladd Pulliam - Coroner Kara Whiddon - Deputy Coroner	Greene County Constables Ryan Walley - Post One Shannon Busby - Post Two	Greene County Emergency Management Trent Robertson - Director Tommy Mathis - Deputy Director Virginia Molten 911 Addressing Coordinator

Have A Great Season!

Sand Hill Bucks
McLain Rams
LJHS Bears
GCHS Wildcats