

Warf named First & Farmers National Bank Assistant VP

First & Farmers National Bank recently announced the promotion of Brent Warf to Assistant Vice President and Electronic Banking Specialist. The announcement was made on behalf of First & Farmers National Bank's Board of Directors by Columbia Market President Ann Martin.

Brent thrives on using his technological expertise to enhance the First & Farmers' customer experience. "Thank you so much to the directors at FFNB for this opportunity. I've always loved a challenge and I can't wait to see what this new challenge brings," stated Warf.

Brent Warf is an Ohio native, but has called Kentucky home for most of his life. He is a 2005 graduate of Green

County High School. He earned his Bachelor of Arts in English Education from Campbellsville University. He went on to complete training from Affinity Realty & Mortgage School. Brent joined First & Farmers National Bank in 2010 working with Internet Banking. As the need for more technology increased, he transitioned to Electronic Banking in the Columbia Main Operations Department. He is a valued contributor to many facets of the bank, including the Marketing Committee and the IT Department.

In his free time, Brent channels his talent into entrepreneurial efforts. He owns his own online business and performs freelance professional IT services and computer repair. He & his wife, Jessica, reside in Glasgow, where she



Brent Warf

manages their household and cares for their four children-- Cheyenne (7), Mason (4), Quincy (2), and Charlotte (4 months). They are active members of Calvary Baptist Church.

Warf is a 2005 graduate of Green County High School.

Columbia Market President Ann Martin stated, "Brent is truly

an asset to our First & Farmers National Bank family. He has a genuine desire to assist customers with any questions or concerns when it comes to their Internet Banking needs. I am extremely proud to have Brent as a vital part of FFNB's future."

First & Farmers National Bank, Inc., a community bank with assets in excess of \$500 million, offers twelve banking locations and serves the financial needs of customers in Adair, Clinton, Cumberland, and Pulaski counties. First & Farmers is very proud of their long history as a well-respected, safe, sound, and profitable bank. For more information about First & Farmers National Bank, please visit www.firstandfarmers.com or call (270) 384-2361.

Public Health recommends Hep A Vaccine

People who are considered high risk for exposure to the Hepatitis A virus should get vaccinated as soon as possible to avoid contracting the virus and lessen the spread of the disease. High risk groups include individuals who use illicit drugs, close contacts of illicit drug users, and homeless people.

The Department for Public Health (DPH) is making this recommendation as part of its efforts to respond to the ongoing outbreak of Hepatitis A. Since the outbreak began in August 2017, reported cases continue to rise and have now been recorded in 103 of Kentucky's 120 counties.

"If you are at-risk of exposure to the Hepatitis A virus, we urge you to get vaccinated immediately. Immunizations can be obtained from a healthcare provider, pharmacies, and clinics throughout the state. Local health departments have limited vaccine supply for at-risk individuals who are uninsured," said DPH Commissioner Dr. Jeff Howard. "In addition, if you live in a county currently experiencing an outbreak, we also urge you to be vaccinated for Hepatitis A as well as continue to practice regular and thorough hand washing, particularly if you are engaging with any of the high risk groups."

About 80 percent of cases in the current outbreak are people in the high risk groups. Other priority populations include;

People with direct contact with someone who has Hepatitis A (particularly during their infectious period);

Men who have sexual contact with men; and people who are at increased risk of complications from Hepatitis A (e.g., people with chronic liver disease).

As of Jan. 26, 3,819 cases have been reported in Kentucky due to the outbreak. A recent year-end review of Kentucky mortality records revealed additional deaths, increasing the total known deaths to 40 associated with the current Hepatitis A outbreak. Counties have reported

1,862 hospitalizations due to Hepatitis A.

To date, 80 counties have reported five or more cases, meaning they meet the threshold for what is considered an outbreak of Hepatitis A virus. Boyd, Carter, Fayette, Floyd, Jefferson, Kenton, Laurel, Madison, and Whitley counties report 100 or more cases associated with the outbreak.

Hepatitis A is a highly contagious, vaccine-preventable disease of the liver, which causes inflammation of the liver and affects the organ's ability to function. Signs and symptoms of Hepatitis A include nausea, diarrhea, and loss of appetite, fever, fatigue, jaundice (yellowing of the skin or eyes), clay-colored bowel movements, dark-colored urine, and abdominal discomfort. Signs and symptoms usually appear 2-4 weeks after exposure, but may occur up to 7 weeks after exposure. Children under 6 years of age with Hepatitis A often show few signs and symptoms.

Hepatitis A virus is found in the stool of infected people, and is usually spread person-to-person when infect-

ed people do not properly wash their hands or do not have access to proper sanitation. Transmission typically occurs when a person ingests infected fecal matter, even in microscopic amounts, from contact with contaminated objects, food, or drinks. DPH recommends frequent hand washing, particularly after using the restroom, or before eating, to prevent transmission of hepatitis A and many other common diseases.

To prevent new cases from occurring, DPH has partnered with local public health staff, health care providers, correctional facilities, faith-based organizations, homeless shelters, and substance abuse treatment centers to vaccinate people who are at the highest risk of getting Hepatitis A. People who have had Hepatitis A disease or previously received 2 doses of the Hepatitis A vaccine do not need to be immunized.

"Vaccination of high risk groups is crucial to stopping the outbreak in Kentucky," added Dr. Howard. "If you or someone you know might be

at risk for Hepatitis A, please get vaccinated as soon as possible at your local health department, primary care physician's office, or local pharmacy. If you suspect you might have Hepatitis A infection or are experiencing symptoms (including, vomiting, diarrhea, jaundice/yellowing of the skin and eyes), you should seek medical care immediately."

Individuals also are advised to contact their local health department or the Reportable Disease program at DPH at (502) 564-3261.

Since 2006, the Centers for Disease Control and Prevention (CDC) has recommended that all children receive the Hepatitis A vaccine series. DPH recommends children aged 1 to 18 years receive the two-dose Hepatitis A vaccine, as well as at-risk adults. Kentucky now requires all students in kindergarten through 12th grade to have two doses of the Hepatitis A vaccine in order to attend school or receive a provisional certificate of immunization.



Got History?

Green County History Museum is now accepting historically significant items to be displayed free for any length of time the owner of the item chooses, or items can be donated.

Everything submitted will be displayed in a safe, temperature controlled environment.

For more information call 270-932-2351 and Col. Bill Landrum will return your call on the weekend. Or stop by Longhunters and leave your name and number.

The museum is a 501(c)3 and donations are tax exempt.

GREEN COUNTY HISTORY MUSEUM
on the second floor of
LONGHUNTERS COFFEE AND TEA COMPANY, GREENSBURG



Before you buy tires, get a quote from Tires MD

We beat chain store prices!

Free Rotate and Balance every 5,000 miles

TIRES MD

West Main, Campbellsville • 270-465-3282
8 a.m.-5 p.m. Weekdays, 8-12 Saturdays



LOG SALES: John Byler • 270-405-7472
TIMBER SALES: Josh Peachey • 270-405-6424

FREE

No Obligation Quote on Standing Timber

We Buy All Grades and Species

2195 GABE ROAD, GREENSBURG, KENTUCKY

Hurry! Last 2 days

GET HUGE SAVINGS WORTH OVER \$300

NOW - February 14th at GREEN COUNTY CELLULAR

HUGE
\$200 minimum trade-in

(270) 932-7997

New and current Bluegrass Cellular customers can both qualify for over **\$300** in combined savings.

HUGER
get more if it's worth more

HUGEST
plus \$100 for new lines

BLUEGRASS CELLULAR
Authorized Retailer

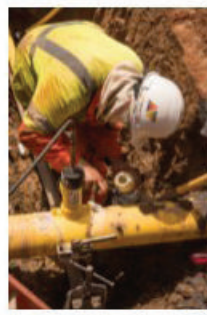
5285 Hodgenville Rd.
Greensburg, KY 42743

Offer available 1/10/19-2/14/19 with purchase of select equipment and service plans, while supplies last. Service plans are subject to plan Terms and Conditions including either an early termination fee or an obligation to pay full outstanding price of selected wireless device immediately upon termination, depending on the service plan. Trade-in and bonus compensation is credit-only; no cash payments will be made. Transaction is subject to the Trade-In Program Terms and Conditions. Sales tax, activation fee and monthly finance charge may apply. Other restrictions apply. Call 1-800-928-CELL, log on to bluegrasscellular.com or visit your nearest Bluegrass Cellular location for details. ©2019 Bluegrass Cellular, Inc. All rights reserved.



Call 270-932-4381 to subscribe, give a news tip or place a classified ad.

CAREERS IN GAS PIPELINE WORK



- Opportunities for advancement
- Competitive wages and industry-leading benefits
- A team-oriented atmosphere centered around core values of Safety, Quality, Commitment and Reputation



Duties include assisting in the repair, maintenance, construction, installation and fusion of plastic pipe and in the reconditioning of gas distribution pipelines.

Successful candidates will have:

- High school diploma or equivalent. 2+ years experience in lieu of education will be considered.
- 1+ year gas construction experience.
- Strong work ethic and ability to work effectively in a team environment.
- Permanent residence within commutable distance of the worksite.
- CDL preferred but not required.

LiUNA!
Feel the Power

Apply online at www.kyconstructionworkers.com