

# REFUND!

## Your Tax Refund Goes Further At Swope Toyota



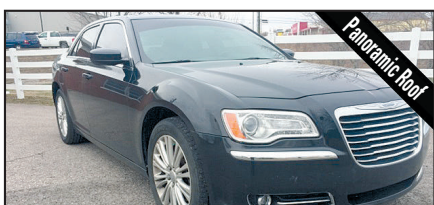
**2009 BMW 335i**  
3-Series,  
Only 85k Miles.  
#T19761001 **\$11,186**

ALL COME WITH COMPLIMENTARY 2 YR/24,000 MILE MAINTENANCE



**2018 Toyota YARIS**  
iA Base,  
Bluetooth,  
Only 4k Miles.  
#U19981330 **\$14,923**

ALL COME WITH COMPLIMENTARY 2 YR/24,000 MILE MAINTENANCE



**2014 Chrysler 300**  
Base, AWD,  
Moonroof,  
Camera, NAV.  
#T19631351 **\$17,805**

ALL COME WITH COMPLIMENTARY 2 YR/24,000 MILE MAINTENANCE



**2015 Kia SOUL**  
FWD, Bluetooth,  
Sirius XM.  
#U19850380 **\$9,427**

ALL COME WITH COMPLIMENTARY 2 YR/24,000 MILE MAINTENANCE



**2010 Nissan TITAN**  
SE, 4WD,  
One Owner.  
#T19731011 **\$13,668**

ALL COME WITH COMPLIMENTARY 2 YR/24,000 MILE MAINTENANCE



**2018 Chevy MALIBU**  
LS, One Owner.  
#U19981290 **\$16,556**

ALL COME WITH COMPLIMENTARY 2 YR/24,000 MILE MAINTENANCE



**2015 Toyota AVALON**  
Hybrid, XLE,  
Premium,  
One Owner.  
#T19801471 **\$19,782**

ALL COME WITH COMPLIMENTARY 2 YR/24,000 MILE MAINTENANCE

**SWOPE TOYOTA**  
The ONLY name you need for everything automotive.

1085 N. Dixie Hwy. Elizabethtown **270-506-4047**  
[www.swopetoyota.com](http://www.swopetoyota.com)

**TOYOTA**

# READY SET GO!

Go get a new Toyota today!  
Offers end April 1st.

## ALL-NEW RAV4

Brand New From The Wheels Up!

2019 RAV4 Limited shown with available options.

Lease an all-new **2019 RAV4 LE**  
8-Speed AT ECT-i 4-Door FWD SUV Gas Model #4430  
\$229/mo. 3-Yr Low Mileage 10,000-Mile/Year Lease  
**\$209** Per Mo.  
36 Mos. \$2999 Due at Signing

-or- **\$1000** TFS RETAIL CASH<sup>2</sup>  
On any all-new 2019 RAV4  
When financed through Toyota Financial Services.

FOR ALL TOYOTA OFFERS

**buyatoyota.com**

**Expanded Toyota Military Rebate Program For MILITARY PERSONNEL & THEIR FAMILIES**

**\$500** OVER & ABOVE ALL CURRENT TOYOTA OFFERS!<sup>8</sup>

★ NOW INCLUDES ALL RETIRED MILITARY ★  
(Regardless of Time Since Retirement)

★ ACTIVE-DUTY & INACTIVE RESERVE ★  
MILITARY PERSONNEL

★ HONORABLY DISCHARGED VETERANS ★  
Within 2 Years of Service  
See dealer for details.

## HIGHLANDER

**BUILT IN THE USA**

any new 2019 HIGHLANDER (Excludes Hybrid)

**\$1250** Cash Back<sup>3</sup>

**\$259** Per Mo.  
-or- Lease a new **2019 HIGHLANDER LE**  
6-Speed AT ECT-i 4-Door L4 FWD SUV Gas Model #6942  
\$259/mo. 3-Year Low Mileage 10,000-Mile/Year Lease  
36 Mos. | \$2999 Due at Signing

## TACOMA

**BUILT IN THE USA**

any new 2019 TACOMA (Excludes TRD Pro)

**\$1000** Cash Back<sup>3</sup>

**\$219** Per Mo.  
-or- Lease a new **2019 TACOMA SR 4X4 DBL CAB**  
6-Speed AT ECT-i 4-Door Pickup Truck Model #7594  
\$219/mo. 3-Year Low Mileage 10,000-Mile/Year Lease  
36 Mos. | \$2999 Due at Signing

Ask about the

**\$500** COLLEGE GRAD REBATE PROGRAM<sup>9</sup>

**THAT'S OVER & ABOVE ALL OTHER INCENTIVES!**

**ToyotaCare**  
No Cost Service & Roadside<sup>10</sup>

Every New Toyota Comes With ToyotaCare.<sup>10</sup>

**Toyota's No Cost Maintenance Plan.**

## CAMRY

**BUILT IN THE USA**

any new 2019 CAMRY (Includes Hybrid)

**\$1500** Cash Back<sup>3</sup>

**\$219** Per Mo.  
-or- Lease a new **2019 CAMRY LE**  
8-Speed AT ECT-i 4-Door Sedan Gas Model #2532  
\$219/mo. 3-Year Low Mileage 10,000-Mile/Year Lease  
36 Mos. | \$2999 Due at Signing

## COROLLA

**BUILT IN THE USA**

any new 2019 COROLLA (Excludes Hatchback)

**\$2000** Cash Back<sup>3</sup>

**\$199** Per Mo.  
-or- Lease a new **2019 COROLLA SE**  
CVT-i 4-Door Sedan Model #1864  
\$199/mo. 3-Year Low Mileage 10,000-Mile/Year Lease  
36 Mos. | \$2999 Due at Signing

1. New 2019 RAV4 LE FWD Model 4430. Lease based on net cap cost of \$23,544. Lease end purchase option \$16,924.\* 2. Customers financing through TFS using standard rates qualify for the \$1,000 TFS Standard Rate Retail Cash. Subject to approved credit. 3. Cash back direct from Toyota Motor Sales, U.S.A., Inc. 4. 2019 Highlander LE L4 FWD Model 6942. Lease based on net cap cost of \$28,440. Lease end purchase option \$20,892.\* 5. New 2019 Tacoma SR 4x4 Double Cab Model 7594. Lease based on net cap cost of \$29,232. Lease end purchase option \$25,849.\* 6. New 2019 Camry LE Model 2532. Lease based on net cap cost of \$22,054. Lease end purchase option \$14,566.\* 7. New 2019 Corolla SE Model 1864. Lease based on net cap cost of \$18,715. Lease end purchase option \$11,561.\* 8. Qualified military personnel and household members of eligible qualifying military personnel are eligible for rebates in addition to all other incentives, depending on model, through Toyota Motor Sales USA, Inc., when leased or financed through Toyota Financial Services. Must take retail delivery from select new dealer stock. The Toyota Military Rebate Program is not compatible with the Toyota College Rebate Program. See participating dealer or visit buyatoyota.com for complete details. 9. The Toyota College Rebate Program is not compatible with the Military Rebate Program. See participating dealer or visit buyatoyota.com for complete details. 10. Covers normal factory scheduled service for 2 years or 25,000 miles, whichever comes first. See Toyota dealer for details and exclusions. Valid only in the continental U.S. and Alaska. \* Subject to approved credit through Toyota Financial Services. Not all customers will qualify - Tier I PLUS customers ONLY. Excludes state and local taxes, tags, registration and title, and insurance. License and applicable fees are extra. Other options and dealer charges extra. Your payment may vary depending on final price. Lessee may be charged for excessive wear based on Toyota Financial Services standards for normal use and for mileage in excess of 30,000 miles at the rate of \$0.15 per mile (low mileage lease). \$350 Disposition Fee is due at lease termination. 1, 2, 3, 4, 5, 6, 7, 8 & 9: Must take retail delivery from new 2019 dealer stock between 3/1/19 and 4/1/19. Customer Cash & Lease offers may not be combined. See participating dealer for complete details. Individual dealer prices and document fees may vary. Offers may vary by region. VEHICLE IMAGES USED FOR ILLUSTRATION PURPOSES ONLY. Expiration for this ad is 4/1/19.

<b>\$2500</b> Cash Back any new 2019 SIENNA	<b>\$2250</b> Cash Back any new 2019 AVALON GAS AVALON HYBRID	<b>\$2000</b> Cash Back any new 2019 YARIS SEDAN TUNDRA (Excludes TRD Pro)	<b>\$1500</b> Cash Back any new 2019 TOYOTA 86	<b>\$1000</b> Cash Back any new 2019 COROLLA HATCHBACK PRIUS c C-HR
--	---	--	---	---

**Let's Go Places**

VISIT YOUR LOCAL KENTUCKY TOYOTA DEALER TODAY!

# SWOPE TOYOTA

Elizabethtown, KY • 1-800-999-7591