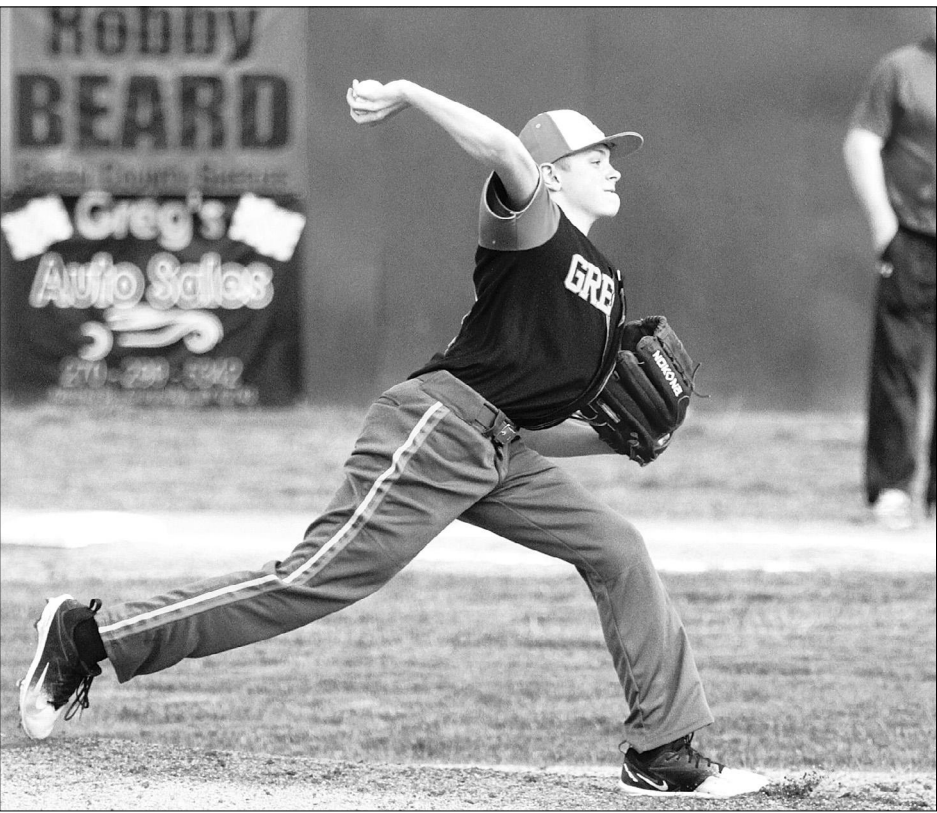


GCMS Baseball



Photos by Angelina Alcott

Caden Scantland slides under a tag attempt to arrive safely at third. The GCMS Dragons have continued to improve throughout the season. They currently lead conference play with a 7-0 record.



Eli Bishop pitches for the middle school Dragons against Clinton County.



Hudson Fields catches a ball off the hop and throws to third. The Dragons host Casey County tomorrow and Hart County Friday, April 19.

Track

From page 13A

Shot put - 1. Nathan Ray - 46-10.00 and 5. Thaddeus Moon - 42-03.00; and Discus throw - 1. Nathan Ray - 148-11 and 3. Thaddeus Moon - 123-08.

The girls finished 16th with 13 points. Mercer County won with 143.

For the boys, they were eighth, tallying 43 points. Central High was the winning team

with 102. There were 19 girls' teams and 22 boys' teams scoring in the meet.

"The Clash of the Classes is one of the toughest open meets in the state and we held our own in a lot of areas. We are at that time of year when an athletes' commitment to their events really starts to show and we had sev-

eral kids set some very good marks," said Head Coach Dan Knoy.

"We only have three meets before region and although there is still time to improve, we must make sure that everyone stays focused and is ready to give their all. As we come down the stretch, we need to emphasize that hard work is always rewarded."

AUCTION

SATURDAY, APRIL 27 • 10 AM CDT

OWNERS: Dwight London and Carolyn London Estate

LOCATION: 25 Bill Jones Road, Greensburg

Listing auctioneers: Anthony Curry (270-932-0213), Heizer Durrett (270-405-3329)

OPEN HOUSE APRIL 26, 9 a.m. - 4 p.m. CT

Sale will begin at 10 a.m. CT Sharp. The land will sale first, followed by vehicles, then personal property

REAL ESTATE: 12 M/L acres offered in tracts with rights reserved to combine. NEW survey underway. Property features a 14x56 mobile home, 30x40 pole barn, 10x24 metal outbuilding, and two ponds.

- | | |
|--|--|
| <p>Vehicles</p> <ul style="list-style-type: none"> • 2002 Toyota Tacoma, 2x4, 5 speed, single cab, approx. 82,000 miles (rebuilt title). • 2013 Honda CR-V, AWD, leather interior, approx. 57,000 miles (rebuilt title). • Chevy 4 door Impala LS (not running) • Gravely Hd, 60 in., zeroturn lawn mower. approx. 7 hours. | <p>Personal Property</p> <ul style="list-style-type: none"> • Husqvarna model 365 chain saw, • Husqvarna model 51 chain saw, • Husqvarna 326 ls weedeater, • Dewalt sawz-all, • Rear Tine tiller • Miscellaneous hand tools. • Floor jack, • 30 mile fence box, • pony cart frame, • Wooden desk, • Cast iron skillet, • Oil lamps, • large metal wood stove smoker, • wood chief wood stove, • 2 full size beds, • wooden shelf. |
| <p>Guns</p> <ul style="list-style-type: none"> • Revelation model 350, 410 single shot • Sovereign .22 LR single shot • Marlin .22, model 60, automatic tube fed | |
| <p>Appliances</p> <ul style="list-style-type: none"> • Whirlpool washer and dryer, • GE fridge, • Frigidaire stove | |

Many items to numerous to mention!

Go to www.durrettrealty.com or our facebook page to see a complete list of items.

TERMS: Property to be sold in tracts with rights reserved to combine at the end. 10% of purchase price due day of auction (cash or good check), along with signing a real estate sales and purchase contract. Balance due with delivery of a general warranty deed on or before 30 days from auction. 2019 Property taxes are to be paid by the sellers. Personal Property- Complete settlement day of sale.

NOTE: There will be a 10% buyer's premium added to all final bids to determine final sales and purchase price. All announcements made day of sale will take precedence over any advertising either written or oral. This information in this advertisement is believed to be accurate, however no liability for its accuracy, errors or omissions is assumed. Property is being sold 'AS IS' with no warranty from the sellers or DURRETT REALTY CO. Buyers are encouraged to inspect the property prior to sell day. All announcements made day of sale take precedence over any advertisement or printed matter. The information in this brochure is believed to be accurate, however no liability for its accuracy, errors, or omissions is assumed.

Durrett Realty has been commissioned by the Dwight London estate and the Carolyn London estate to offer this excellent hobby farm to the public at auction on Saturday April 27th at 10:00. If you're in the market for a good hobby farm, excellent hunting ground, or looking for some investment property. Don't fail to attend this sale.

Finis W. Durrett
Broker

Anthony Curry
App. Auctioneer



Todd Durrett,
Auctioneer

Heizer Durrett,
Sales Agent

Website: www.durrettrealty.com • E-mail: wayned123@scrtc.com

Call Dile Realty & Auction Co. 270-932-7355 • Call Dile Realty

Auction
Sat., April 20 • 9 a.m. CT

Owner: Troy Davis

Auction conducted at 850 Ferry Rd. • Greensburg

Tractors • Farm Equipment • RTVs • Motorcycles
Mini Cab Van • Trucks • Saw Mill • Tools & Misc.

Tractors – Farm Equipment – Tools & Misc.

- | | |
|---|--|
| <ul style="list-style-type: none"> • Portable 2016 Wood Mizer LT 35 Hydraulic Saw Mill with Debarker • 25 Hp Kohler 110 Hrs • Kubota M6800 Tractor 1060 Hrs • 7000 Ford Tractor • 180 MF Tractor Partial Cab • 986 International Tractor w/Cab • 660 New Holland Baler • 2014 Kubota RTVX900 825 Hrs Hyd Bed • 95 F-250 4wd 7.3 Power Stroke 5 Spd 183,000 miles • JD 9Ft 350 Sickle Mower Hydraulic Lift • 4wd 2007 Honda Robicon 50 430 Hrs • 2008 Kawasaki Vulcan 500 Motorcycle 2975 Miles • 2001 Mitsubishi Minicab Van 4wd 5 spd hi/lo range • 2003 Honda XR70R Dirt Bike, (not running) • PAX 3 Ton Feed bin/straight auger • Land Pride 8 Ft pull type bush hog RCR 3596 • 3 Pt Hyd Post Driver • 3 Pt Seed Sower • Troy Built Horse Tiller • 4 Horse Gooseneck Trailer w/Tack Room (New Tires) • Gravity Wagon • International 1800 Load Star Truck 404 •Eng 5/2spd (not running) • Hay Tumble Buggy • Hay Fork • Steel Trusses & Metal Roofing | <ul style="list-style-type: none"> • Campbell Hausfield Airless Paint Sprayer • Hydraulic Wood Splitter • Solar Dry Kiln • Big Dog House • Mig Welder Chicago Electric • Steel Skeleton Log Bed • Tilt Trailer 5x10 • 3 pt Middle Buster Plow • JD 2 Row Plow • Pet Safe Wireless Fence • Goat Gofer • Training Collar • ATV Sprayers • Zareba 100ml Fence Charger • Do-All Outdoors White Wing Auto Trap • Air Hockey Table • 200,000+BTU Reznor waste oil furnace(parts) • Electric Cement Mixer • Hay Tarp • Saddles ("Tucker Trooper, Big Horn Cordurg") • Chest Deep Freezer • Clothes Dryer • Husquavarna Chainsaw • Weed Eater • Rubbermaid Water Tanks • 45 Lb Thrust Trolling Motor • Bench Grinder Drill • Drill • Saws • Router Table • Air Compressor |
|---|--|

Terms – A 10% buyer's premium will be added to all winning bids. There will be a 6% Kentucky sales tax applied to all items, unless exempt form is on file day of auction. Items to be paid for before removing from premises. Personal property is being offered "As Is. All announcements made from Auction block day of the Auction will take precedence over prior advertising either written or oral. The information in the advertisement is believed to be accurate; however no liability for its accuracy, errors or omissions is assumed. Buyers should verify the information for their satisfaction and conduct any inspection and bid by their judgment.

Auctioneer Comments – Dile Realty & Auction Co. appreciates the opportunity to offer this personal property to the public at Auction. Don't fail to attend this Auction Saturday April 20, at 9 a.m. CT. See you there!

For more information call Jerry Dile at 270-932-7355 or 270-299-5010 or Eddie Bailey at 270-405-3374 or log on to www.dilerealty.greensburgky.net or www.auctionzip.com

Watch the Record-Herald for more land, homes and farm equipment auctions coming up.



5096 Hodgenville Rd., Greensburg, KY 42743

Call Dile Realty & Auction Co. 270-932-7355 • Call Dile Realty

Call Dile Realty & Auction Co. 270-932-7355 • Call Dile Realty

Jerry Dile Auctions
20TH ANNUAL
SPRING CONSIGNMENT AUCTION

Sat., April 27 • 9 a.m. CT

Located at 613 Columbia Highway • Greensburg

Accepting Farm Equipment • Lawn and Garden • Heavy Equipment

Several items already consigned

Consign early to sell early

Receiving Mon., April 22, thru Fri., April 26, 9 a.m. - 5 p.m. CT

For more details call

Jerry Dile - Broker/Auctioneer

Dile Realty and Auction Company

270-299-5010 or 270-932-7355

Call Dile Realty & Auction Co. 270-932-7355 • Call Dile Realty

Drugs not welcome in Greensburg or Green County.
Call Anonymous Tip Line at 270-405-1031 to report illegal activity.