

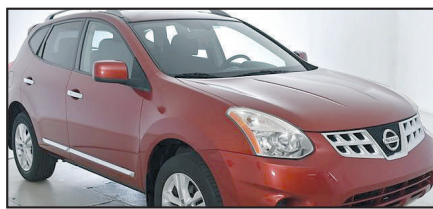
Your Tax Refund Goes Further

at SWOPE TOYOTA



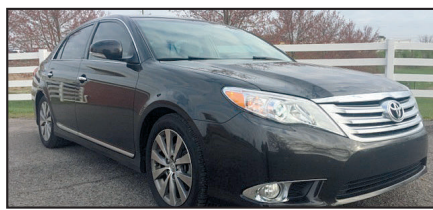
2011 Ford EDGE
SE, One Owner,
Bluetooth.
#U19981301 **\$8,969**

ALL COME WITH COMPLIMENTARY 2 YR/24,000 MILE MAINTENANCE



2012 Nissan ROGUE
SV, AWD,
One Owner.
#T19661671 **\$12,495**

ALL COME WITH COMPLIMENTARY 2 YR/24,000 MILE MAINTENANCE



2011 Toyota AVALON
Ltd., One Owner,
Only 41k Miles.
#T19671391 **\$15,900**

ALL COME WITH COMPLIMENTARY 2 YR/24,000 MILE MAINTENANCE



2009 Honda ODYSSEY
EX-L, FWD.
#T19801702 **\$8,723**

ALL COME WITH COMPLIMENTARY 2 YR/24,000 MILE MAINTENANCE



2011 Jeep GR. CHEROKEE
Laredo, 4WD.
#T19801042 **\$10,718**

ALL COME WITH COMPLIMENTARY 2 YR/24,000 MILE MAINTENANCE



2011 Buick ENCLAVE
CXL, One Owner,
FWD.
#T19801801 **\$12,949**

ALL COME WITH COMPLIMENTARY 2 YR/24,000 MILE MAINTENANCE



2014 Ford MUSTANG
V6, Bluetooth,
6-Speed.
#U19981520 **\$16,521**

ALL COME WITH COMPLIMENTARY 2 YR/24,000 MILE MAINTENANCE



1085 N. Dixie Hwy. Elizabethtown **270-506-4047**
www.swopetoyota.com



TOYOTA

USA ROAD TRIP

ALL-NEW RAV4



\$1000

TFS RETAIL CASH¹

On any all-new 2019 RAV4
When financed through Toyota Financial Services.

-or- Lease an all-new
2019 RAV4 LE
8-Speed AT ECT-i 4-Door FWD SUV
Gas Model #4430

\$209 Per Mo.

\$209/mo. 3-Year Low Mileage
10,000-Mile/Year Lease
36 Mos. | \$2999 Due at Signing

HIGHLANDER



\$1500

CASH BACK⁴

On any new 2019 HIGHLANDER
Excludes Hybrid

-or- Lease a new
2019 HIGHLANDER LE
6-Speed AT ECT-i 4-Door L4 FWD SUV
Gas Model #6942

\$259 Per Mo.

\$259/mo. 3-Year Low Mileage
10,000-Mile/Year Lease
36 Mos. | \$2999 Due at Signing

TACOMA



\$1000

CASH BACK⁴

On any new 2019 TACOMA
Excludes TRD Pro

-or- Lease a new
2019 TACOMA SR 4X4 DBL CAB
6-Speed AT ECT-i 4-Door Pickup Truck
Model #7594

\$219 Per Mo.

\$219/mo. 3-Year Low Mileage
10,000-Mile/Year Lease
36 Mos. | \$2999 Due at Signing

TUNDRA



\$2000

CASH BACK⁴

On any new
2019 TUNDRA
Excludes TRD Pro

4RUNNER



2019 4RUNNER
**BEST RESALE
VALUE:
TOP 10**

Kelley Blue Book⁷



CAMRY



\$1500

CASH BACK⁴

On any new 2019 CAMRY
Includes Hybrid

-or- Lease a new
2019 CAMRY LE
8-Speed AT ECT-i 4-Door
Sedan Gas Model #2532

\$219/mo. 3-Year Low Mileage | 10,000-Mile/Year Lease
36 Mos. | \$2999 Due at Signing

\$219 Per Mo.

SIENNA



\$2500

CASH BACK⁴

On any new
2019 SIENNA

-or- Lease a new
2019 SIENNA LE
Direct Shift 8-Speed AT ECT-i
8-Pass. FWD Minivan Model #5338

\$389/mo. 3-Year Low Mileage | 10,000-Mile/Year Lease
36 Mos. | \$3999 Due at Signing

\$389 Per Mo.

ALL-NEW 2020 COROLLA ARRIVING DAILY!

FOR ALL TOYOTA OFFERS

buyatoyota.com



Expanded Toyota Military
Rebate Program For
**MILITARY PERSONNEL
& THEIR FAMILIES**

\$500 OVER & ABOVE
ALL CURRENT
TOYOTA OFFERS!¹⁰

★ NOW INCLUDES ALL RETIRED MILITARY ★
(Regardless of Time Since Retirement)

★ ACTIVE-DUTY & INACTIVE RESERVE ★
MILITARY PERSONNEL

★ HONORABLY DISCHARGED VETERANS ★
Within 2 Years of Service
See dealer for details.

Ask about the

\$500

COLLEGE GRAD
REBATE PROGRAM¹¹

THAT'S OVER & ABOVE
ALL OTHER INCENTIVES!



ToyotaCare

Every New Toyota
Comes With ToyotaCare.¹²

Toyota's No Cost
Maintenance Plan.

1. All-New 2019 RAV4 (includes Hybrid). Customers financing through TFS using standard rates qualify for the \$1,000 TFS Standard Rate Retail Cash. TFS APR contract term is less than or equal to 72 months. Subject to approved credit. 2. All-New 2019 RAV4 LE FWD Model 4430. Lease based on net cap cost of \$23,544. Lease end purchase option \$16,924. 3. Toyota vehicles and components are built using U.S. and globally sourced parts. 4. Cash back direct from Toyota Motor Sales, U.S.A., Inc. 5. New 2019 Highlander LE L4 FWD Model 6942. Lease based on net cap cost of \$28,440. Lease end purchase option \$20,892. 6. New 2019 Tacoma SR 4x4 Double Cab Model 7594. Lease based on net cap cost of \$29,232. Lease end purchase option \$25,849. 7. Vehicles projected resale value is specific to the 2019 model year. For more information, visit Kelley Blue Book's KBB.com. Kelley Blue Book is a registered trademark of Kelley Blue Book Co., Inc. 8. New 2019 Camry LE Model 2532. Lease based on net cap cost of \$22,054. Lease end purchase option \$14,566. 9. New 2019 Sienna LE FWD 8-Passenger Model 5338. Lease based on net cap cost of \$30,407. Lease end purchase option \$19,018. 10. Qualified military personnel and household members of eligible qualifying military personnel are eligible for rebates in addition to all other incentives, depending on model, through Toyota Motor Sales USA, Inc., when leased or financed through Toyota Financial Services. Must take retail delivery from select new dealer stock. The Toyota Military Rebate Program is not compatible with the Toyota College Rebate Program. See participating dealer or visit buyatoyota.com for complete details. 11. The Toyota College Rebate Program is not compatible with the Military Rebate Program. See participating dealer or visit buyatoyota.com for complete details. 12. ToyotaCare covers normal factory scheduled service for 2 years or 25,000 miles, whichever comes first. 24-hour roadside assistance is also included for 2 years and unlimited miles. See Toyota dealers for details and exclusions. Valid only in the continental U.S. and Alaska. ** NO SECURITY DEPOSIT. Subject to approved credit through Toyota Financial Services. Not all customers will qualify - Tier I PLUS customers ONLY. Excludes state and local taxes, tags, registration and title, and insurance. License and applicable fees are extra. Other options and dealer charges extra. Your payment may vary depending on final price. Lessee may be charged for excessive wear based on Toyota Financial Services standards for normal use and for mileage in excess of 30,000 miles at the rate of \$0.15 per mile (low mileage lease). \$350 Disposition Fee is due at lease termination. For 1, 2, 4, 5, 6, 8, 9, 10 & 11: Must take retail delivery from new 2019 & 2020 dealer stock between 4/2/19 and 4/30/19. Customer Cash & Lease offers may not be combined. See participating dealer for complete details. Individual dealer prices and document fees may vary. Offers may vary by region. VEHICLE IMAGES USED FOR ILLUSTRATION PURPOSES ONLY. Expiration for these offers is 4/30/19.



Let's
Go
Places

VISIT YOUR LOCAL KENTUCKY TOYOTA DEALER TODAY!

SWOPE TOYOTA

Elizabethtown, KY • 1-800-999-7591