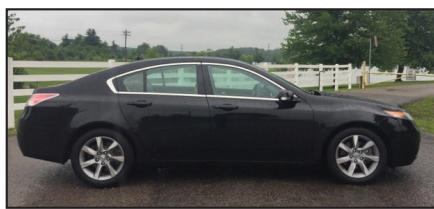


# SWOPE TOYOTA HOT DEALS



**2013 Dodge JOURNEY**  
Crew, Rear DVD,  
Low Miles.  
#T19782011 **\$14,669**

ALL COME WITH COMPLIMENTARY 2 YR/24,000 MILE MAINTENANCE



**2012 Acura TL**  
3.5, Heated Seats,  
Leather.  
#T19802251 **\$15,900**

ALL COME WITH COMPLIMENTARY 2 YR/24,000 MILE MAINTENANCE



**2014 Hyundai ELANTRA**  
Ltd., One Owner,  
Rear Camera,  
LOW MILES.  
#T19761311 **\$12,538**

ALL COME WITH COMPLIMENTARY 2 YR/24,000 MILE MAINTENANCE



**2013 Kia RIO**  
LX,  
One Owner.  
#U19981411 **\$7,355**

ALL COME WITH COMPLIMENTARY 2 YR/24,000 MILE MAINTENANCE



**2009 Mitsubishi ECLIPSE**  
GT, 6 Speed.  
#T19661622 **\$7,548**

ALL COME WITH COMPLIMENTARY 2 YR/24,000 MILE MAINTENANCE



**2014 Toyota SIENNA**  
L, One Owner.  
#T19781801 **\$14,389**

ALL COME WITH COMPLIMENTARY 2 YR/24,000 MILE MAINTENANCE



**2015 Volkswagen BEETLE**  
1.8T, LOW MILES.  
#U19982171 **\$14,028**

ALL COME WITH COMPLIMENTARY 2 YR/24,000 MILE MAINTENANCE

**SWOPE TOYOTA**  
The ONLY name you need for everything automotive.

1085 N. Dixie Hwy.  
Elizabethtown **270-506-4047**  
[www.swopetoyota.com](http://www.swopetoyota.com)



**GREAT AMERICAN  
4TH OF JULY  
EVENT**

**BIG  
SAVINGS!**

**DON'T MISS IT! GOING ON NOW!**

FOR ALL TOYOTA OFFERS [buyatoyota.com](http://buyatoyota.com)

any all-new **2019 RAV4**  
(Excludes Hybrid)  
**\$1250**  
TFS RETAIL  
CASH<sup>1</sup>  
\$900 TFS RETAIL CASH  
on any new 2019 RAV4 HYBRID  
When financed through  
Toyota Financial Services.

-or- Lease an all-new  
**2019 RAV4 LE**  
8-Speed AT ECT-i 4-Door FWD SUV  
Gas Model #4430  
**\$199** Per Mo.  
\$199/mo. 3-Year Low Mileage  
10,000-Mile/Year Lease  
36 Mos. | \$2999 Due at Signing

**ALL-NEW RAV4**



any all-new  
**2020 COROLLA**  
(Excludes Hybrid)  
**\$750**  
CASH BACK<sup>3</sup>  
\$500 CASH BACK  
on any all-new  
2020 COROLLA HYBRID

-or- Lease an all-new  
**2020 COROLLA LE**  
CVT-i-S 4-Door Sedan  
Gas Model #1852  
**\$179** Per Mo.  
\$179/mo. 3-Year Low Mileage  
10,000-Mile/Year Lease  
36 Mos. | \$2999 Due at Signing

**ALL-NEW COROLLA**



any new 2019 HIGHLANDER (Excludes Hybrid)  
**0.9%** for **60**  
APR Financing Mos.<sup>6</sup>

**\$2500**  
Cash Back<sup>3</sup>  
\$750 on 2019 HIGHLANDER HYBRID

**HIGHLANDER**



**\$239** Per Mo.

-or- Lease a new **2019 HIGHLANDER LE**  
6-Speed AT ECT-i 4-Door L4 FWD SUV Gas Model #6942  
\$239/mo. 3-Year Low Mileage | 10,000-Mile/Yr Lease  
36 Mos. | \$2999 Due at Signing

any new 2019 CAMRY (Includes Hybrid)  
**2.9%** for **60**  
APR Financing Mos.<sup>8</sup>

**\$1500**  
Cash Back<sup>3</sup>

**CAMRY**



**\$209** Per Mo.

-or- Lease a new **2019 CAMRY LE**  
8-Speed AT ECT-i 4-Door Sedan Gas Model #2532  
\$209/mo. 3-Year Low Mileage | 10,000-Mile/Yr Lease  
36 Mos. | \$2999 Due at Signing

any new 2019 TACOMA (Excludes TRD Pro)  
**\$1000**  
Cash Back<sup>3</sup>

**BUILT IN THE USA**<sup>5</sup>

**TACOMA**



**\$229** Per Mo.

-or- Lease a new **2019 TACOMA SR 4X4 DBL CAB**  
6-Speed AT ECT-i 4-Door Pickup Truck Model #7594  
\$229/mo. 3-Year Low Mileage | 10,000-Mile/Yr Lease  
36 Mos. | \$2999 Due at Signing

**BUILT IN THE USA**<sup>5</sup>

**TUNDRA**

any new 2019 TUNDRA  
(Excludes TRD Pro)



**\$3000** Cash Back<sup>3</sup>

**MORE  
BIG CASH  
BACK**

'19 Avalon Gas  
**\$3500**  
\$3,000 on '19 Avalon Hybrid

'19 Sienna  
**\$3000**

'19 Prius Liftback  
**\$1000**  
Includes AWD-e

'19 4Runner<sup>3</sup>  
**\$500**  
Includes AWD-e

**Expanded Toyota Military  
Rebate Program For  
MILITARY PERSONNEL  
& THEIR FAMILIES**  
**\$500** OVER & ABOVE  
ALL CURRENT  
TOYOTA OFFERS!<sup>11</sup>  
★ NOW INCLUDES ALL RETIRED MILITARY ★  
(Regardless of Time Since Retirement)  
★ ACTIVE-DUTY & INACTIVE RESERVE ★  
MILITARY PERSONNEL  
★ HONORABLY DISCHARGED VETERANS ★  
Within 2 Years of Service  
See dealer for details.

Ask about the  
**\$500**  
COLLEGE GRAD  
REBATE PROGRAM<sup>12</sup>  
THAT'S OVER & ABOVE  
ALL OTHER INCENTIVES!

**ToyotaCare**  
Every New Toyota  
Comes With ToyotaCare.<sup>13</sup>  
Toyota's No Cost  
Maintenance Plan.

1. All-New 2019 RAV4 (includes Hybrid). Customers financing through TFS using standard rates qualify for the \$1,250/RAV4 Gas Models & \$900/RAV4 Hybrid Models TFS Standard Rate Retail Cash. TFS APR contract term is less than or equal to 72 months. Subject to approved credit. 2. All-New 2019 RAV4 LE FWD Model 4430. Lease based on net cap cost of \$23,664. Lease end purchase option \$17,289. 3. Cash back direct from Toyota Motor Sales, U.S.A., Inc. 4. All-new 2020 Corolla LE Model 1852. Lease based on net cap cost of \$17,830. Lease end purchase option \$12,677. 5. Toyota vehicles and components are built using U.S. and globally sourced parts. 6. New 2019 Highlander (excludes hybrid) 0.9% APR financing for 36 months with \$28.16 per \$1,000 borrowed OR 0.9% APR financing for 48 months with \$21.22 per \$1,000 borrowed OR 0.9% APR financing for 60 months with \$17.05 per \$1,000 borrowed OR 3.9% APR for 72 months with \$15.60 per \$1,000 borrowed. 7. New 2019 Highlander LE Model L4 FWD Model 6942. Lease based on net cap cost of \$28,762. Lease end purchase option \$20,818. 8. New 2019 Camry (includes hybrid) 2.9% APR financing for 36 months with \$29.04 per \$1,000 borrowed OR 2.9% APR financing for 48 months with \$22.09 per \$1,000 borrowed OR 2.9% APR financing for 60 months with \$17.92 per \$1,000 borrowed OR 3.9% APR for 72 months with \$15.60 per \$1,000 borrowed. 9. New 2019 Camry LE Model 2532. Lease based on net cap cost of \$21,621. \$250 TFS Lease Subvention Cash must be applied toward due at signing - which reduces \$3,249 due at signing to \$2,999. Lease end purchase option \$14,110. 10. New 2019 Tacoma SR 4x4 Double Cab Model 7594. Lease based on net cap cost of \$29,799. Lease end purchase option \$25,940. 11. Qualified military personnel and household members of eligible qualifying military personnel are eligible for rebates in addition to all other incentives, depending on model, through Toyota Motor Sales U.S.A., Inc. when leased or financed through Toyota Financial Services. Must take retail delivery from select new dealer stock. The Toyota Military Rebate Program is not compatible with the Toyota College Rebate Program. See participating dealer or visit [buyatoyota.com](http://buyatoyota.com) for complete details. 12. The Toyota College Rebate Program is not compatible with the Military Rebate Program. See participating dealer or visit [buyatoyota.com](http://buyatoyota.com) for complete details. 13. ToyotaCare covers normal factory scheduled service for 2 years or 25,000 miles, whichever comes first. 24-hour roadside assistance is also included for 2 years and unlimited miles. See Toyota dealers for details and exclusions. Valid only in the continental U.S. and Alaska. \* NO SECURITY DEPOSIT. Subject to approved credit through Toyota Financial Services. Not all customers will qualify - Tier 1 PLUS customers ONLY. Excludes state and local taxes, tags, registration and title, and insurance. License and applicable fees are extra. Other options and dealer charges extra. Your payment may vary depending on final price. Lessee may be charged for excessive wear based on Toyota Financial Services standards for normal use and for mileage in excess of 30,000 miles at the rate of \$0.15 per mile (low mileage lease). \$350 Disposition Fee is due at lease termination. \* Subject to approved credit through Toyota Financial Services Tier 1 & 1 only. Not all customers will qualify for lowest rate - see dealer for terms and conditions. For 1, 2, 4, 6, 7, 8, 9, 10, 11 & 12: Must take retail delivery from new 2019 & 2020 dealer stock between 7/2/19 and 7/31/19. Customer Cash & Lease offers may not be combined. See participating dealer for complete details. Individual dealer prices and document fees may vary. Offers may vary by region. VEHICLE IMAGES USED FOR ILLUSTRATION PURPOSES ONLY. Expiration for these offers is 7/31/19.

**Let's  
Go  
Places**

**VISIT YOUR LOCAL KENTUCKY TOYOTA DEALER TODAY!**

**SWOPE TOYOTA**  
Elizabethtown, KY • 1-800-999-7591