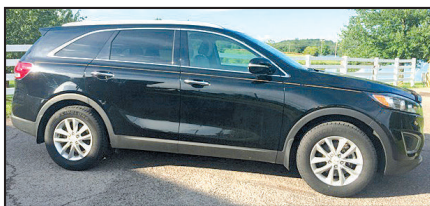


SWOPE TOYOTA HOT DEALS



2009 Toyota RAV4
Base, 4WD.
#T19751172
\$9,493

ALL COME WITH COMPLIMENTARY 2 YR/24,000 MILE MAINTENANCE



2016 Kia SORENTO
LX, One Owner,
Rear Camera.
#T19662271
\$12,851

ALL COME WITH COMPLIMENTARY 2 YR/24,000 MILE MAINTENANCE



2014 Ford MUSTANG
V6, 6-Speed.
#U19982340
\$15,178

ALL COME WITH COMPLIMENTARY 2 YR/24,000 MILE MAINTENANCE



2003 Chrysler PT CRUISER
One Owner,
Base.
#T19681261
\$3,766

ALL COME WITH COMPLIMENTARY 2 YR/24,000 MILE MAINTENANCE



2010 Toyota VENZA
One Owner,
Base, FWD.
#T19802011
\$10,495

ALL COME WITH COMPLIMENTARY 2 YR/24,000 MILE MAINTENANCE



2016 Nissan VERSA NOTE
Rear Camera,
Local Trade.
#T19631491
\$12,986

ALL COME WITH COMPLIMENTARY 2 YR/24,000 MILE MAINTENANCE



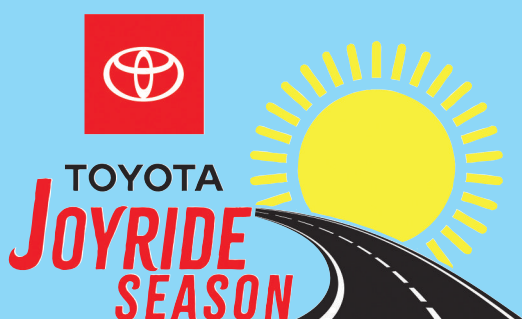
2009 Jeep WRANGLER
X, 4WD,
Low Miles.
#U19981831
\$15,340

ALL COME WITH COMPLIMENTARY 2 YR/24,000 MILE MAINTENANCE



1085 N. Dixie Hwy. Elizabethtown **270-506-4047**

www.swopetoyota.com



BIG SAVINGS!
Going on now!

FOR ALL TOYOTA OFFERS buyatoyota.com



Expanded Toyota Military Rebate Program For **MILITARY PERSONNEL & THEIR FAMILIES**

\$500 OVER & ABOVE ALL CURRENT TOYOTA OFFERS!¹¹

★ NOW INCLUDES ALL RETIRED MILITARY ★ (Regardless of Time Since Retirement)

★ ACTIVE-DUTY & INACTIVE RESERVE ★ MILITARY PERSONNEL

★ HONORABLY DISCHARGED VETERANS ★ Within 2 Years of Service See dealer for details.

Ask about the **\$500 COLLEGE GRAD REBATE PROGRAM**¹² THAT'S OVER & ABOVE ALL OTHER INCENTIVES!



Every New Toyota Comes With ToyotaCare.¹³ Toyota's No Cost Maintenance Plan.

any all-new 2019 RAV4 (Excludes Hybrid)
\$1250 TFS RETAIL CASH¹
\$900 TFS RETAIL CASH on any new 2019 RAV4 HYBRID When financed through Toyota Financial Services.

-or- Lease an all-new **2019 RAV4 LE**
8-Speed AT ECT-i 4-Door FWD SUV Gas Model #4430
\$199 Per Mo.
\$199/mo. 3-Year Low Mileage 10,000-Mile/Year Lease
36 Mos. | \$2999 Due at Signing



any all-new 2020 COROLLA (Excludes Hybrid)
\$750 CASH BACK³
\$500 CASH BACK on any all-new 2020 COROLLA HYBRID

-or- Lease an all-new **2020 COROLLA LE**
CVT-i S 4-Door Sedan Gas Model #1852
\$179 Per Mo.
\$179/mo. 3-Year Low Mileage 10,000-Mile/Year Lease
36 Mos. | \$2999 Due at Signing



any new 2019 HIGHLANDER (Excludes Hybrid)
0.9% for 60 APR Financing Mos.⁶
\$239 Per Mo.

\$2500 Cash Back³
\$750 on 2019 HIGHLANDER HYBRID
-or- Lease a new **2019 HIGHLANDER LE**
6-Speed AT ECT-i 4-Door L4 FWD SUV Gas Model #6942
\$239/mo. 3-Year Low Mileage | 10,000-Mile/Yr Lease
36 Mos. | \$2999 Due at Signing



any new 2019 CAMRY (Includes Hybrid)
2.9% for 60 APR Financing Mos.⁸
\$209 Per Mo.

\$1500 Cash Back³
-or- Lease a new **2019 CAMRY LE**
8-Speed AT ECT-i 4-Door Sedan Gas Model #2532
\$209/mo. 3-Year Low Mileage | 10,000-Mile/Yr Lease
36 Mos. | \$2999 Due at Signing



any new 2019 TACOMA (Excludes TRD Pro)
\$1000 Cash Back³
\$229 Per Mo.
-or- Lease a new **2019 TACOMA SR 4X4 DBL CAB**¹⁰
6-Speed AT ECT-i 4-Door Pickup Truck Model #7594
\$229/mo. 3-Year Low Mileage | 10,000-Mile/Yr Lease
36 Mos. | \$2999 Due at Signing

\$3000 Cash Back³
any new 2019 TUNDRA (Excludes TRD Pro)



MORE BIG CASH BACK

'19 Avalon Gas **\$3500**
\$3,000 on '19 Avalon Hybrid

'19 Sienna **\$3000**

'19 Prius Liftback **\$1000**
Includes AWD-e

'19 4Runner **\$500**
Includes AWD-e



VISIT YOUR LOCAL KENTUCKY TOYOTA DEALER TODAY!

SWOPE TOYOTA

Elizabethtown, KY • 1-800-999-7591

1. All-New 2019 RAV4 (includes Hybrid). Customers financing through TFS using standard rates qualify for the \$1,250 RAV4 Gas Models & \$900 RAV4 Hybrid Models TFS Standard Rate Retail Cash. TFS APR contract term is less than or equal to 72 months. Subject to approved credit. 2. All-New 2019 RAV4 LE FWD Model #4430. Lease based on net cap cost of \$23,664. Lease end purchase option \$17,289. 3. Cash back direct from Toyota Motor Sales, U.S.A., Inc. 4. All-new 2020 Corolla LE Model #1852. Lease based on net cap cost of \$17,830. Lease end purchase option \$12,677. 5. Toyota vehicles and components are built using U.S. and globally sourced parts. 6. New 2019 Highlander (excludes hybrid) 0.9% APR financing for 36 months with \$28.16 per \$1,000 borrowed OR 0.9% APR financing for 48 months with \$21.22 per \$1,000 borrowed OR 0.9% APR financing for 60 months with \$17.05 per \$1,000 borrowed OR 3.9% APR for 72 months with \$15.60 per \$1,000 borrowed. 7. New 2019 Highlander LE Model LE L FWD Model #6942. Lease based on net cap cost of \$28,762. Lease end purchase option \$20,818. 8. New 2019 Camry (includes hybrid) 2.9% APR financing for 36 months with \$28.04 per \$1,000 borrowed OR 2.9% APR financing for 48 months with \$22.09 per \$1,000 borrowed OR 2.9% APR financing for 60 months with \$17.92 per \$1,000 borrowed OR 3.9% APR for 72 months with \$15.60 per \$1,000 borrowed. 9. New 2019 Camry LE Model LE L FWD Model #2532. Lease based on net cap cost of \$21,621. \$250 TFS Lease Subvention Cash must be applied toward due at signing - which reduces \$3,249 due at signing to \$2,999. Lease end purchase option \$14,110. 10. New 2019 Tacoma SR 4x4 Double Cab Model #7594. Lease based on net cap cost of \$29,799. Lease end purchase option \$25,940. 11. Qualified military personnel and household members of eligible qualifying military personnel are eligible for rebates in addition to all other incentives, depending on model, through Toyota Motor Sales, U.S.A., Inc., when leased or financed through Toyota Financial Services. Must take retail delivery from select new dealer stock. The Toyota Military Rebate Program is not compatible with the Toyota College Rebate Program. See participating dealer or visit buyatoyota.com for complete details. 12. The Toyota College Rebate Program is not compatible with the Military Rebate Program. See participating dealer or visit buyatoyota.com for complete details. 13. ToyotaCare covers normal factory scheduled service for 2 years or 25,000 miles, whichever comes first. 24-hour roadside assistance is also included for 2 years and unlimited miles. See Toyota dealers for details and exclusions. Valid only in the continental U.S. and Alaska. * NO SECURITY DEPOSIT. Subject to approved credit through Toyota Financial Services. Not all customers will qualify - Tier 1 PLUS customers ONLY. Excludes state and local taxes, tags, registration and title, and insurance. License and applicable fees are extra. Other options and dealer charges extra. Your payment may vary depending on final price. Leases may be charged for excessive wear based on Toyota Financial Services standards for normal use and for mileage in excess of 30,000 miles at the rate of \$0.15 per mile (low mileage lease), \$350 Disposition Fee is due at lease termination. ** Subject to approved credit through Toyota Financial Services Tier 1+ & 1 only. Not all customers will qualify for lowest rate - see dealer for terms and conditions. For 1, 2, 4, 6, 7, 8, 9, 10, 11 & 12: Must take retail delivery from new 2019 & 2020 dealer stock between 7/2/19 and 7/31/19. Customer Cash & Lease offers may not be combined. See participating dealer for complete details. Individual dealer prices and document fees may vary. Offers may vary by region. VEHICLE IMAGES USED FOR ILLUSTRATION PURPOSES ONLY. Expiration for these offers is 7/31/19.