

Last Days of Summer

BEST SELECTION AROUND!



2012 Buick ENCLAVE
Leather Group,
3rd Row,
Bluetooth
#T19712251
\$11,962

ALL COME WITH COMPLIMENTARY 2 YR/24,000 MILE MAINTENANCE



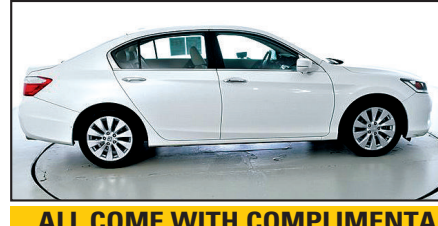
2006 Toyota HIGHLANDER
AWD, V6,
#T19802612
\$8,708

ALL COME WITH COMPLIMENTARY 2 YR/24,000 MILE MAINTENANCE



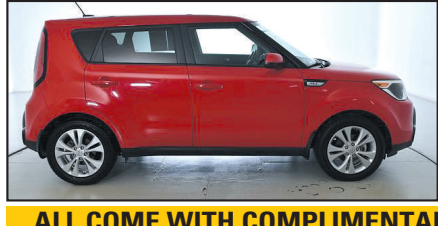
2017 Hyundai ELANTRA
SE, One Owner,
Low Miles!
#T20781332
\$13,958

ALL COME WITH COMPLIMENTARY 2 YR/24,000 MILE MAINTENANCE



2013 Honda ACCORD
EX-L,
One-Owner,
Gas Saver.
#T19671601
\$14,450

ALL COME WITH COMPLIMENTARY 2 YR/24,000 MILE MAINTENANCE



2016 Kia SOUL PLUS
One Owner,
Only 26k Miles!
#T19771142
\$14,817

ALL COME WITH COMPLIMENTARY 2 YR/24,000 MILE MAINTENANCE



2017 Chevy CRUZE
LS, Camera,
Bluetooth,
Only 13k Miles!
#U19982440
\$14,984

ALL COME WITH COMPLIMENTARY 2 YR/24,000 MILE MAINTENANCE



2016 Chevy TRAX
LTZ, AWD,
One Owner,
Only 37k Miles!
#T19662131
\$16,766

ALL COME WITH COMPLIMENTARY 2 YR/24,000 MILE MAINTENANCE



1085 N. Dixie Hwy. Elizabethtown **270-506-4047**
www.swopetoyota.com

TOYOTA LAST CHANCE - CLEARANCE -
HURRY! PRICES HAVE BEEN CUT ON THE LAST OF THE 2019s!

Going On Now!
FOR ALL TOYOTA OFFERS
buyatoyota.com

Expanded Toyota Military Rebate Program For MILITARY PERSONNEL & THEIR FAMILIES

\$500 OVER & ABOVE ALL CURRENT TOYOTA OFFERS!¹²

- ★ NOW INCLUDES ALL RETIRED MILITARY ★ (Regardless of Time Since Retirement)
- ★ ACTIVE-DUTY & INACTIVE RESERVE ★ MILITARY PERSONNEL
- ★ HONORABLY DISCHARGED VETERANS ★ Within 2 Years of Service See dealer for details.

RAV4

any new 2019 RAV4 (Excludes Hybrid)

\$750 CASH BACK²

-or- any new 2019 RAV4 (Excludes Hybrid)

1.9% for 60 APR Financing Mos.³

-or- Lease a new **2019 RAV4 LE**
8-Speed AT ECT-i 4-Door FWD SUV Gas Model #4430
\$199/mo. 3-Year 10,000-Mile/Year Lease

\$199 Per Mo. **36 Mos.** \$2999 Due at Signing

ALL-NEW COROLLA

BUILT IN THE USA¹

any all-new 2020 COROLLA (Excludes Hybrid)

\$1000 CASH BACK²

\$500 CASH BACK on 2020 COROLLA HYBRID

-or- any all-new 2020 COROLLA (Includes Hybrid)

2.9% for 60 APR Financing Mos.⁵

-or- Lease an all-new **2020 COROLLA LE**
CVT-I-S 4-Door Sedan Gas Model #1852
\$159/mo. 3-Year 10,000-Mile/Year Lease

\$159 Per Mo. **36 Mos.** \$2999 Due at Signing

TACOMA

BUILT IN THE USA¹

any new 2019 TACOMA (Includes TRD Pro)

\$1750 CASH BACK²

-or- any new 2019 TACOMA (Includes TRD Pro)

2.9% for 60 APR Financing Mos.⁵

-or- Lease a new **2019 TACOMA SR 4X4 DBL CAB**
6-Speed AT ECT-i 4-Door Pickup Truck Model #7594
\$219/mo. 3-Year 10,000-Mile/Year Lease

\$219 Per Mo. **36 Mos.** \$2999 Due at Signing

Ask about the **\$500 COLLEGE GRAD REBATE PROGRAM**¹³

THAT'S OVER & ABOVE ALL OTHER INCENTIVES!

ToyotaCare

Every New Toyota Comes With ToyotaCare.¹⁴

Toyota's No Cost Maintenance Plan.

HIGHLANDER

BUILT IN THE USA¹

any new 2019 HIGHLANDER (Excludes Hybrid)

\$3000 CASH BACK²

\$1250 CASH BACK on 2019 HIGHLANDER HYBRID

-or-

0.9% for 60 APR Financing Mos.⁸

-or- Lease a new **2019 HIGHLANDER LE**
6-Speed AT ECT-i 4-Door L4 FWD SUV Gas Model #6942
\$249/mo. 3-Year 10,000-Mile/Year Lease

\$249 Per Mo. **36 Mos.** \$2999 Due at Signing

CAMRY

BUILT IN THE USA¹

any new 2019 CAMRY (Includes Hybrid)

\$1750 CASH BACK²

-or-

1.9% for 60 APR Financing Mos.³

-or- Lease a new **2019 CAMRY LE**
8-Speed AT ECT-i 4-Door Sedan Gas Model #2532
\$219/mo. 3-Year 10,000-Mile/Year Lease

\$219 Per Mo. **36 Mos.** \$2999 Due at Signing

TUNDRA

BUILT IN THE USA¹

any new 2019 TUNDRA (Excludes TRD Pro)

\$3000 CASH BACK²

-or-

0% for 60 APR Financing Mos.¹¹

4RUNNER

any new 2019 4RUNNER (Excludes TRD Pro)

\$1000 CASH BACK²

\$4000 CASH BACK '19 SEQUOIA **\$3500 CASH BACK '19 AVALON GAS '19 86** **\$3000 CASH BACK '19 AVALON HYBRID** **\$2000 CASH BACK '19 COROLLA HATCHBACK '19 PRIUS LIFTBACK** **\$1500 CASH BACK '20 SIENNA** **\$1250 CASH BACK '19 C-HR** **\$1000 CASH BACK '19 YARIS SEDAN '20 TUNDRA Excludes TRD Pro**

1. Toyota vehicles and components are built using U.S. and globally sourced parts. 2. Cash back direct from Toyota Motor Sales, U.S.A., Inc. 3. New 2019 RAV4 (excludes hybrid) and new 2019 Camry (includes hybrid), 1.9% APR financing for 36 months with \$28.60 per \$1,000 borrowed OR 1.9% APR for 48 months with \$21.65 per \$1,000 borrowed OR 1.9% APR for 60 months with \$17.48 per \$1,000 borrowed OR 2.9% APR for 72 months with \$15.15 per \$1,000 borrowed on Camry & 3.9% APR for 72 months with \$15.60 per \$1,000 borrowed on RAV4. 4. New 2019 RAV4 LE FWD Model 4430. Lease based on net cap cost of \$23,532. Lease end purchase option \$16,656. 5. All-New 2020 Corolla (includes hybrid) and new 2019 Tacoma 2.9% APR financing for 36 months with \$29.04 per \$1,000 borrowed OR 2.9% APR for 48 months with \$22.09 per \$1,000 borrowed OR 2.9% APR for 60 months with \$17.92 per \$1,000 borrowed OR 3.9% APR for 72 months with \$15.60 per \$1,000 borrowed. 6. All-new 2020 Corolla LE Model 1852. Lease based on net cap cost of \$17,211. \$800 TFS Lease Subvention Cash must be applied toward due at signing - which reduces \$3,599 due at signing to \$2,999. Lease end purchase option \$12,466. 7. New 2019 Tacoma SR 4x4 Double Cab Model 7594. Lease based on net cap cost of \$29,646. Lease end purchase option \$25,154. 8. New 2019 Highlander (excludes hybrid), 0.9% APR financing for 36 months with \$28.16 per \$1,000 borrowed OR 0.9% APR financing for 48 months with \$21.22 per \$1,000 borrowed OR 0.9% APR for 60 months with \$17.05 per \$1,000 borrowed OR 1.9% APR financing for 72 months with \$14.71 per \$1,000 borrowed. 9. New 2019 Highlander LE Model LE, FWD Model 6942. Lease based on net cap cost of \$28,902. Lease end purchase option \$20,580. 10. New 2019 Camry LE Model 2532. Lease based on net cap cost of \$21,550. \$500 TFS Lease Subvention Cash must be applied toward due at signing - which reduces \$3,489 due at signing to \$2,999. Lease end purchase option \$13,876. 11. New 2019 Tundra (excludes TRD Pro) 0% APR for 36 months with \$27.78 per \$1,000 borrowed or 0% APR for 48 months with \$20.83 per \$1,000 borrowed OR 0% APR for 60 months with \$16.67 per \$1,000 borrowed OR 1.9% APR for 72 months with \$14.71 per \$1,000 borrowed. 12. Qualified military personnel and household members of eligible qualifying military personnel are eligible for rebates in addition to all other incentives, depending on model, through Toyota Motor Sales, U.S.A., Inc., when leased or financed through Toyota Financial Services. Must take retail delivery from select new dealer stock. The Toyota Military Rebate Program is not compatible with the Toyota College Rebate Program. See participating dealer or visit buyatoyota.com for complete details. 13. The Toyota College Rebate Program is not compatible with the Military Rebate Program. See participating dealer or visit buyatoyota.com for complete details. 14. ToyotaCare covers normal factory scheduled service for 2 years or 25,000 miles, whichever comes first. 24-hour roadside assistance is also included for 2 years and unlimited miles. See Toyota dealers for details and exclusions. Valid only in the continental U.S. and Alaska. * Subject to approved credit through Toyota Financial Services Tier 1+ & 1 only. Not all customers will qualify for lowest rate - see dealer for terms and conditions. ** NO SECURITY DEPOSIT. Subject to approved credit through Toyota Financial Services. Not all customers will qualify - Tier 1 PLUS customers ONLY. Excludes state and local taxes, tags, registration and title, and insurance. License and applicable fees are extra. Other options and dealer charges extra. Your payment may vary depending on final price. Lessee may be charged for excessive wear based on Toyota Financial Services standards for normal use and for mileage in excess of 30,000 miles at the rate of \$0.15 per mile (low mileage lease). \$350 Disposition Fee is due at lease termination. For 2, 3, 4, 5, 6, 7, 8, 9, 10, 11, 12, & 13: Must take retail delivery from new 2019 & 2020 dealer stock between 8/1/19 and 9/30/19. Customer Cash & Lease offers may not be combined. See participating dealer for complete details. Individual dealer prices and document fees may vary. Offers may vary by region. VEHICLE IMAGES USED FOR ILLUSTRATION PURPOSES ONLY. Expiration for these offers is 9/30/19.

Let's Go Places

VISIT YOUR LOCAL KENTUCKY TOYOTA DEALER TODAY!

SWOPE TOYOTA

Elizabethtown, KY • 1-800-999-7591