



# Greensburg-Green County A proud past — A promising future Way Back When

By CAROL DIAL  
SPECIAL TO THE  
R-H

Nov. 11, 2009

**Flu cases decreasing** - The number of students in class has increased following a one week break to stop the spread of influenza.

**Band makes state finals** - The GCHS Marching Dragons advanced to state competition making the Marching Dragons Band one of the top four in the state.

**New Masonic Lodge** - The design of the front of the new Masonic Lodge was inspired by King Solomon's Temple.

**Frank earns 1st place** - Green County's Molly Frank finished in first place for the Lady Dragons at the Second Region cross country meet.

Nov. 10, 1999

**Dragon Dollars** - The students of GCHS have opened a bank to give students experience in banking.

**Bale voted** - One-hundred-year-old Lily Bale voted at the North

Summersville Precinct last Tuesday. Bale first voted in 1921, the year the 19th Amendment was passed allowing women to vote.

**Light Up Greensburg** - November 26 at 6 p.m., lights on the Square will be turned on for the Light Up Greensburg Festivities.

**Tobacco market delayed** - Kentucky tobacco sales will be delayed until Nov. 29 because of damage caused by Hurricane Floyd and flooding in North Carolina.

Nov. 9, 1989

**Bagby defeats Goff** - County voters chose Vernon Bagby over incumbent County Judge-Executive Morris Goff in the county election.

**Turning lane at intersection** - City Council voted to mark a turning lane for traffic on East Hodgenville Street at the 68-East. Hodgenville intersection.

**Firemen busy** - County firemen answered several calls including a house fire, bulldozer fire and a

corn picker on fire.

**Trail ride** - Dr. Kenneth DeSimone hosted a trail ride in the Gabe-Hudgins area.

Nov. 15, 1979

**Bridge 53 percent complete** - Work continues on the Russell Creek Bridge on Highway 68 with construction being 53 percent complete.

**Globetrotter in town** - The world famous Harlem Globetrotters will play the Washington Generals in the GCHS gym tonight.

**Beauty Salon Grand Opening** - The Hidden Valley Beauty Salon will hold an open House and Craft Show Nov. 18. Operators are Nancy Mills, Geneva Bale and Doreen Hunt.

**Summershade, Hazel Kessler** - There seems to be the feel of winter in the air. We are hearing talk of snow.

Nov. 13, 1969

**McDowell Wing to close** - The McDowell Wing at JTCH will close Nov. 15 due to underutilization.

**New county agent** - Russell Lowe has been

appointed to the position of county agent for Green County.

**Teacher retires** - Dollye Webb was presented a silver bowl and cameo pin in appreciation of her 50 years of service upon her retirement.

**The Louisville Store ad** - Four-buckle overshoes, \$4.99; brown jersey gloves, 4 pr. \$1; men's sweat shirts and flannel shirts, \$1.29-\$1.99 ea.; men's overalls, \$3.99; blanket lined blue denim coats, \$5.

Nov. 13, 1959

**ScottdiesatBrush Creek** - Charles Scott, 86, died Nov. 6 at his home in the Brush Creek section while chopping wood.

**TB cases decline** - Fifteen people have been diagnosed with tuberculosis in Green County this year. This is one-half the number diagnosed in 1930.

**Obituaries** - McKinley Sneed, 64, Nov. 9; Hattie Squires Wilcoxson, 77, Nov. 7.

**Pierce** - We are having good hog killing weather the last few days.

## Monthly menu for GC Senior Center

The Green County Senior Citizen's menu for November is:

**Thursday, Nov. 7-** Pork chop, sweet potatoes, lima beans, pears, roll, margarine, 1% milk.

**Friday, Nov. 8-** Beef stew, crackers, potatoes, peanut butter sandwich, juice, sliced bread, 1% milk.

**Monday, Nov. 11-** Meatloaf, mashed potatoes, peas, fruit cocktail, roll, margarine, 1% milk.

**Tuesday, Nov. 12-** Orange bbq chicken, carrots, hominy, pine-

apple chunks, sliced bread, 1% milk.

**Wednesday, Nov. 13-** Spaghetti, meatballs, salad, tomatoes, pepper, thousand island dressing, orange, Texas toast, margarine, 1% milk.

**Thursday, Nov. 14-** Pinot beans, cornbread, onion, zucchini, tomatoes, tropical fruit, 1% milk.

**Friday, Nov. 15** - Thanksgiving Potluck.

**Monday, Nov. 18-** Hot dog, chili, bun, mustard, ketchup, baked beans, potato salad, pears, 1% milk.

**Tuesday, Nov. 19-** Vegetable soup, crackers, pimento cheese, leaf lettuce, apple, 1% milk.

**Wednesday, Nov. 20-** Beef taco, cheese, lettuce, sour cream, tomatoes, peppers, refried beans, taco chips, taco sauce, tropical fruit, 1% milk.

**Thursday, Nov. 21-** Barbecue chicken, peas and carrots, diced potatoes, mandarin oranges, roll, margarine, 1% milk.

**Friday, Nov. 22-** Lasagna, tossed salad, peppers, tomatoes,

ranch dressing, Texas toast, margarine, banana, 1% milk.

**Monday, Nov. 25-** Chicken tenders, carrots, hominy, juice, roll, margarine, 1% milk.

**Tuesday, Nov. 26-** Cheeseburger, bun, onion, tomato, lettuce, mustard, mayo, cole slaw, corn, apple, 1% milk.

**Wednesday, Nov. 27-** Turkey, gravy, mashed potatoes, green beans, dressing, cranberry salad, roll, margarine, pumpkin pie, 1% milk.

## Check carbon monoxide detectors

As we turned back the clocks Sunday and temperatures continue to fall, the Cabinet for Health and Family Services and the Kentucky Department for Public Health would like to remind residents to take action to prevent carbon monoxide poisoning.

"To prepare for colder weather, Kentuckians should make sure their heat sources and carbon monoxide detectors are in good working order," said Dr. Angela Dearinger, Commissioner for Kentucky's Department for Public Health.

On average, carbon monoxide poisoning sends about 217 people per year to the emergency room in Kentucky, according to data from the Environmental Public Health Tracking Program. These trips to the ER for carbon monoxide poisoning are preventable when people are prepared.

To protect yourself and your family from carbon monoxide, follow these safety tips: Make sure you have working carbon

monoxide detectors. All homeowners with gas appliances are required to have carbon monoxide detectors. If you have a new home with all electric appliances, a detector is not needed unless the home has an attached garage. Detectors can be purchased at most hardware and big box stores. Daylight Saving Time is a good time each year to replace the batteries in your detector and push the "Test" button to ensure it's working properly. Replace your detector every five years or according to the manufacturer's instructions.

Never run a gasoline or propane heater or a grill (gas or charcoal) inside your home or in an unventilated garage. Any heating system that burns fuel produces carbon monoxide. Use a battery-powered detector where you have fuel burning devices but no electric outlets, such as in tents, cabins, RVs, and boats with enclosed cabins.

Generators should be run at a safe dis-

tance (at least 25 feet) from the home. Never run a generator in the home or garage, or right next to windows or doors.

Never run a car in an enclosed space. If a vehicle is running, you must have a door open to the outside.

At high levels, carbon monoxide can cause death within minutes. Symptoms of overexposure to carbon monoxide include headache, fatigue,

dizziness, shortness of breath, nausea, and confusion. If you suspect you may be experiencing carbon monoxide poisoning, or your detector sounds an alarm, head outside immediately for fresh air and call 911.

For more information about cold weather safety, visit the Kentucky Health Alerts website.

Additional information is available at <http://chfs.ky.gov/>.

### Mill Creek Veterinary Center

1820 Campbellsville Hwy.,  
Greensburg

7 a.m. - 6 p.m. CT Monday - Friday

7 a.m. - 12 p.m. CT Sat.

270-932-5000

[www.facebook.com/MillCreekVeterinaryCenter](http://www.facebook.com/MillCreekVeterinaryCenter)



Ange Olt, DVM



NOW SERVING GREENSBURG  
792 Campbellsville Road | 270-973-5400

[ptpros.com](http://ptpros.com)

### Lawn Tractor/Zero Turn Repair

We Service All Kinds of OUTDOOR POWER EQUIPMENT

### Summersville Small Engine Repair

"Service is our #1 product"

James & Sam Hershberger  
(270) 932-2821

2831 Summersville Rd.  
(Bengal Rd.) Greensburg

**SEMI-TRUCK/TANKER DRIVER NEEDED TO HAUL FARM PRODUCTS-NO CDL REQUIRED-DRUG FREE-MEDICAL CARD REQUIRED-EXPERIENCED DRIVERS ONLY. VETERANS WELCOME.**  
502-349-9707

## FANtastic Family Friendly Coupon!



### Heart of Kentucky Band

7:30 PM ET Every Saturday Night

**Saturday Night Stage Show**  
The fan with this coupon can also include each member of their party for only \$10 each!

\*Only one coupon redeemed per show\*

Saturday, November 9 at 7:30 PM ET

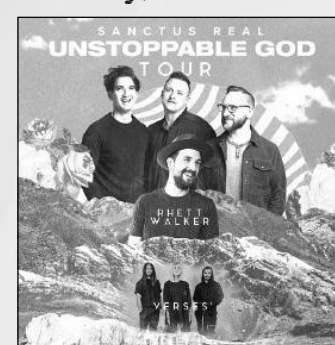


### Veteran's Salute

Red Clay Strays • Jessie Key • Phillip Clarkson

Receive 1/2 price admission when you present your military ID

Sunday, November 10 at 6:30 PM ET



### Sanctus Real, Rhett Walker and Verses

BRING YOUR CHURCH GROUP!

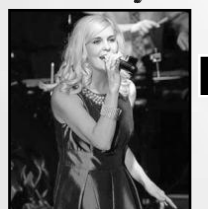
A special rate is offered for groups of 10 or more!

Saturday, November 16 at 7:30 PM ET



Jesse Keith Whitley  
Joe Hampton • Kelli Hampton

Saturday, November 23 at 7:30 PM ET



### Heidi Shaye Baldwin

Saturday, November 30 at 7:30 PM ET



### Jessie Key

A truck-stop-soul singer and songwriter from Glendale, Kentucky who currently lives in Nashville, Tennessee.

Friday, December 6 at 7:30 PM ET



### One Shot Johnny

A three-piece blues band playing both modern and traditional blues

Friday, December 13 at 8 PM ET



### Delbert McClinton

an American blues rock and electric blues singer-songwriter, guitarist, harmonica player and pianist

Friday, December 14 at 7:30 PM ET



### Tim Farmer's Christmas Show

Join the host of KET's Tim Farmer's Country Kitchen for an exciting evening of music and entertainment



227 William E. Lobb Dr.,  
Greensburg, Ky 42743  
270-973-5483  
[www.greenriverlive.com](http://www.greenriverlive.com)



tickets available on



Kentucky's Newest 1,000 Seat Music Venue!