

Traditional Exhibits that can be entered for Florence County Kids: ages 7—18, grades 1st—12th

- 22.....C.....5.....Item for use as storage
- 22.....C.....6.....Item for use in the kitchen
- 22.....C.....7.....Item for use in the living room
- 22.....C.....8.....Any other Item for use in the home
- 22.....C.....9.....Item for use in workshop
- 22.....C.....10.....Item for use out-of-doors
- 22.....C.....11.....Lathe turned item
- 22.....C.....12.....Repaired or refinished furniture
- 22.....C.....13.....Toy or homemade game
- 22.....C.....14.....Wood carved item
- 22.....C.....15.....Any other item not listed, identified



DEPARTMENT 23: ELECTRICITY

- ◆ All entries must comply with current OSHA safety standards
- ◆ Cords and trouble lights must be grounded
- ◆ Exhibitors can only enter in their experience group and only one exhibit per lot.
- ◆ Exhibits must be complete with batteries when needed
- ◆ Exhibits must be labeled with a description of what it is and how to operate it on a 4x6 card
- ◆ Posters should be size appropriate for display with maximum size of 14"x22"
- ◆ Premiums for Beginning Electrician:
1st place: \$2.00; 2nd place: \$1.75; 3rd place: \$1.50; 4th place: \$1.25
- ◆ Premiums for Intermediate Electrician:
1st place: \$2.50; 2nd place: \$2.25; 3rd place: \$2.00; 4th place: \$1.75
- ◆ Premiums for Advanced Electrician:
1st place: \$3.00; 2nd place: \$2.75; 3rd place: \$2.50; 4th place: \$2.25

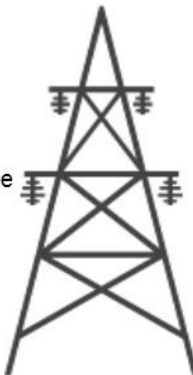
CLASS A — BEGINNING ELECTRICIAN (1-2 YEARS EXPERIENCE)

- 23.....A.....1.....Circuit Board
- 23.....A.....2.....Demo. board, 3 & 4 way switch
- 23.....A.....3.....Display of electric wires labeled
- 23.....A.....4.....Display showing types fuses
- 23.....A.....5.....Electric question board
- 23.....A.....6.....Homemade Buzzer
- 23.....A.....7.....Homemade flashlight
- 23.....A.....8.....Model electric motor
- 23.....A.....9.....Other homemade electric equipment
- 23.....A.....10.....Other low volt/magnetic device
- 23.....A.....11.....Poster of electric terms and definitions
- 23.....A.....12.....Scrapbook of experiments
- 23.....A.....13.....Test lamp
- 23.....A.....14.....Any other low voltage or magnetic device



CLASS B — INTERMEDIATE ELECTRICIAN (3-4 YEARS EXPERIENCE)

- 23.....B.....1.....Display of incandescent lamps, fluorescent tubes, light fixtures, identified and differences identified
- 23.....B.....2.....Display of motor types
- 23.....B.....3.....Display showing types of fuses
- 23.....B.....4.....Homemade lamp/lighting unit
- 23.....B.....5.....Lighting poster or chart
- 23.....B.....6.....Other homemade electric equipment
- 23.....B.....7.....Other low volt/magnetic device
- 23.....B.....8.....Plans lighting improvements
- 23.....B.....9.....Plans showing lighting improvements in the home
- 23.....B.....10.....Poster of electrical items that heat or cool
- 23.....B.....11.....Scrapbook of experiments
- 23.....B.....12.....Test Lamp
- 23.....B.....13.....Trouble light
- 23.....B.....14.....Any other electric project not listed



CLASS C — ADVANCED ELECTRICITY (5+ YEARS EXPERIENCE)

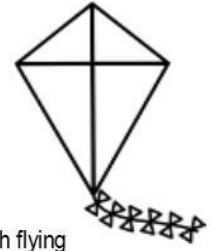
- 23.....C.....1.....Diagram of electrical improvements
- 23.....C.....2.....Diagram or photos w/descript of electrical improvement made at home
- 23.....C.....3.....Display showing motor types, operation of maintenance
- 23.....C.....4.....Electrical central system display
- 23.....C.....5.....General layout of home or other building wiring system: service drop branch circuits
- 23.....C.....6.....Homemade electrical equipment
- 23.....C.....7.....Homemade lamp or lighting until
- 23.....C.....8.....Other low volt/magnetic device
- 23.....C.....9.....Poster showing peak load times and what can be done to help reduce it
- 23.....C.....10.....Safety poster with high voltage
- 23.....C.....11.....Scrapbook of experiments
- 23.....C.....12.....Show how an electric bill is calculated
- 23.....C.....13.....Wiring layout home or other
- 23.....C.....14.....Any other electric project not listed

DEPARTMENT 24: MECHANICAL PROJECTS

- ◆ Airplanes may have been flown but must be clean and in good repair for judging and exhibit at the fair
- ◆ Commercial built models are not eligible for entry. Models must be built by the exhibitor using kits, plans or self-design
- ◆ No advertising in displays
- ◆ Poster, log or display, Posters should be size appropriate for display with maximum size of 14"x22"
- ◆ School Exhibits are accepted
- ◆ Premiums for Mechanical Projects:
1st place: \$2.50; 2nd place: \$2.25; 3rd place: \$2.00; 4th place: \$1.75

CLASS A — AEROSPACE

- 24.....A.....1.....Kite, from kit
- 24.....A.....2.....Kite, homemade
- 24.....A.....3.....Model airplane
- 24.....A.....4.....Model airplane, glider
- 24.....A.....5.....Model rocket, junior
- 24.....A.....6.....Model rocket, senior
- 24.....A.....7.....Poster or display on basic parts for rockets
- 24.....A.....8.....Poster or display on personal experience with flying
- 24.....A.....9.....Poster or display on the history of flight
- 24.....A.....10.....Poster or display on navigation and weather
- 24.....A.....11.....Poster showing the parts of an airplane
- 24.....A.....12.....Poster/Exhibit on flying
- 24.....A.....13.....Any other aerospace exhibit



CLASS B — AUTOMOTIVE

- 24.....B.....1.....Carburetor, identify components
- 24.....B.....2.....Display worn tires & causes
- 24.....B.....3.....Dull vs. protected auto finish
- 24.....B.....4.....Educational poster on automotive safety
- 24.....B.....5.....Maintenance cost, insurance on car
- 24.....B.....6.....Model obstructed intersection
- 24.....B.....7.....Model of marked crosswalks
- 24.....B.....8.....Model showing blind driveways
- 24.....B.....9.....Neglected vs. serviced filters
- 24.....B.....10.....Poster identifying driving safety
- 24.....B.....11.....Poster indicating types of traffic signs, signals and highway markers used in Wisconsin
- 24.....B.....12.....Poster, describing or illustrating the history of automobiles
- 24.....B.....13.....Soiled vs. clean car interiors
- 24.....B.....14.....Worn vs safe - fan belt display
- 24.....B.....15.....Worn vs safe brake drums/lines
- 24.....B.....16.....Worn vs serviceable- thermostat
- 24.....B.....17.....Any other automotive project not listed



CLASS C — BICYCLE

- 24.....C.....1.....Poster showing bicycling hand signals
- 24.....C.....2.....Poster showing the care and maintenance of a bicycle
- 24.....C.....3.....Poster showing the different parts of a bicycle
- 24.....C.....4.....Poster stating rules for safe bicycling
- 24.....C.....5.....Safety poster
- 24.....C.....6.....Any other bicycle project not listed

CLASS D — GEOSPATIAL

- 24.....D.....1.....Map made showing a route from my home to the Florence County Fairgrounds
- 24.....D.....1.....Map of exhibitor's neighborhood with a list of features
- 24.....D.....1.....Map of the Town of Aurora with a list of features
- 24.....D.....1.....Map of the Town of Commonwealth with a list of features
- 24.....D.....1.....Map of the Town of Fence with a list of features
- 24.....D.....1.....Map of the Town of Fem with a list of features
- 24.....D.....1.....Map of the Town of Florence with a list of features
- 24.....D.....1.....Map of the Town of Homestead with a list of features
- 24.....D.....1.....Map of the Town of Long Lake with a list of features
- 24.....D.....1.....Map of the Town of Tipler with a list of features
- 24.....D.....1.....Poster or display explaining elements and symbols found on maps
- 24.....D.....1.....Poster/display explaining the difference between a compass & a GPS
- 24.....D.....1.....Poster or display geocaching adventure
- 24.....D.....1.....Poster or display of essential geographical data on exhibitor's house
- 24.....D.....1.....Poster or display types and uses of maps
- 24.....D.....1.....Poster or display types of geographical tools
- 24.....D.....1.....Poster or display uses of geographical tools
- 24.....D.....1.....Any other map created by exhibitor
- 24.....D.....1.....Any other geospatial project not listed

CLASS E — HANDYMAN

- 24.....E.....1.....Maintenance tools & supplies, identified and uses identified
- 24.....E.....2.....Poster on handyman project safety
- 24.....E.....3.....Repaired/refinished/constructed article for sport/recreational purposes
- 24.....E.....4.....Repaired, refinished or constructed article for use in the home
- 24.....E.....5.....Repaired, refinished or constructed article for use in the workshop

At www.florencecountyfair.com you can find:

- Entry Forms
- Schedule of Events
- Coloring Contest
- Comic Book Pages
- And Much More!