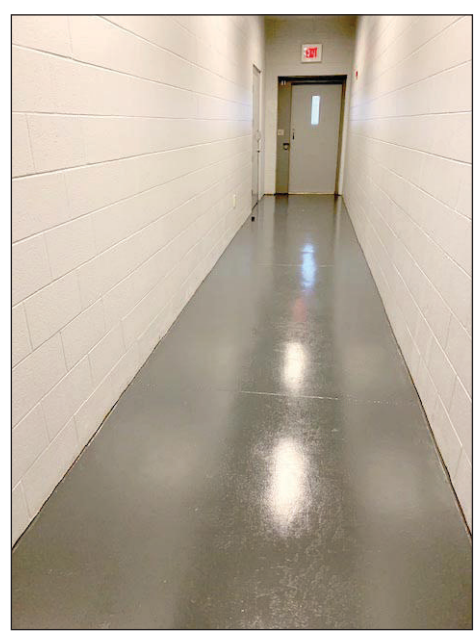


# PRECAUTIONS

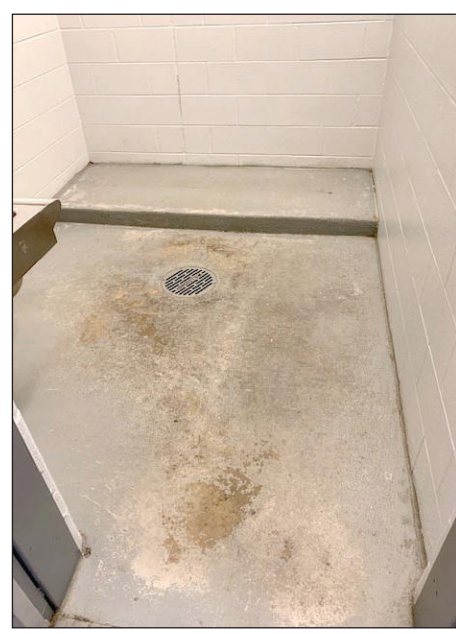
continued from page one



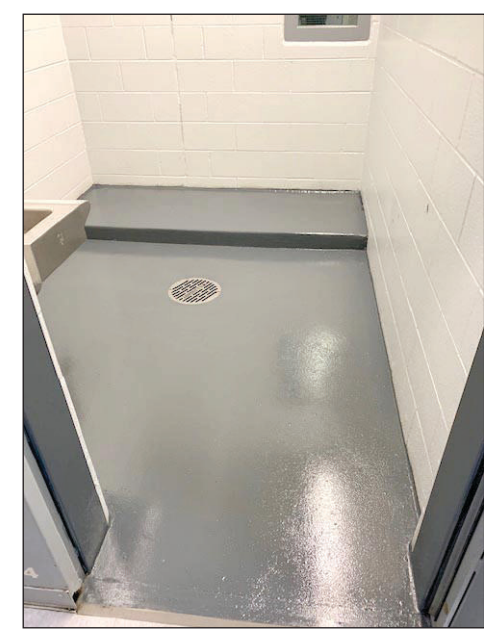
Before the hallway had a fresh coat of paint at RCDC.



Hallway Painting Complete.



Holding Cell before new paint.



Holding Cell with a Fresh Coat of Paint at RCDC.

of questions that pertain to the COVID-19 pandemic. Temperature checks are also very active within the inmate area as well. Jailer Dunbar and staff are checking temperatures frequently and watching the health of the inmates, specifically watching for COVID-19 symptoms.

"We have purchased a lot of hand sanitizer and placed them throughout the jail for it to be easy accessed," Dunbar said. "Masks and Lysol have also been purchased, but such items are on back-order, so just waiting for those items to get to us to utilize."

Jailer Dunbar also spoke highly of Tammy Hill who had made the staff members cloth masks. The masks are essential for the workers since they are the only ones entering into the facility. Dunbar also stated that once news of the pandemic broke, extra gloves

were ordered to have on hand because he knew the need would arise. The jail also has more gloves on back-order.

Jailer Dunbar stated that measures were also being taken for new inmate intakes.

"We have two single intake cells, one for male and one for female," Dunbar said.

He explained that new intakes will be held in the holding cell up front for seven days. Their food and necessities will be brought to them just as if they were in general population. Their temperatures are checked at least two times a day and monitored closely to make sure no COVID-19 symptoms are showing. Once the seven days are up and the new intakes are showing no symptoms, they are released into general population.

Dunbar said this precaution is healthy and

beneficial to the current inmates as well as the new intake. It is all about the safety.

Keeping RCDC clean is also a key focus of the jail staff.

"We have scraped every floor and scrubbed every wall and repainted everything," Dunbar said.

He also explained that the jail had doubled its

cleaning supplies everywhere, as this been a great time to utilize the inmates in a positive manner to make the jail a better place. Jailer Dunbar said he

can't give his staff the praise they deserve and said the inmates have worked hard to keep the jail clean as well. He said most all have went above and beyond.

# SKRECC Celebrates National Lineman Appreciation Day

South Kentucky RECC recognized Monday, April 13, 2020, as National Lineman Appreciation Day to honor its hardworking men who often work in challenging conditions to keep the power on.

The co-op is recognizing all electric linemen/women across the nation for the services they perform around the clock in dangerous conditions to keep the power on and protect the public's safety.

"Electric linemen do not often receive recognition as the First Responders they are and the appreciation they deserve," said Ken Simmons, South Kentucky RECC CEO. "They work all hours of the day, often in hazardous conditions far from their families, going above

and beyond to restore power to their communities. When a storm hits, they set aside their personal priorities because Mother Nature doesn't work around holidays, vacations and birthdays. A service-oriented mentality is one of the many admirable characteristics of an electric lineworker. Our linemen, as well as others from all across the nation, truly deserve this special day of recognition."

South Kentucky RECC invites members to take a moment to thank a lineworker for the important work. On Monday, April 13, you can use #ThankALineworker on social media to show your support for the brave men and women who power our lives.

## Super Crossword

### Answers

T	E	M	P	O	T	H	A	N	K	G	A	M	P	A	T	T	I		
A	C	O	R	N	E	S	T	E	E	A	M	I	A	T	H	O	S		
R	O	B	E	R	T	S	T	E	V	E	N	S	O	N	R	A	O	U	L
C	E	O	S	F	O	C	U	S	T	R	U	C	E						
R	A	P	I	D	N	E	S	S	F	R	A	N	K	W	R	I	G	H	T
A	M	A	N	T	R	O	T	E	M	P	T	W	I	S	H	E	S		
J	O	A	C	E	O	A	T	E	S	I	D								
A	C	U	T	E	S	H	R	O	U	D	S	G	O	O	S	E			
H	O	P	R	I	T	T	H	A	N	S	A	N	D	E	R	S	E	N	
L	O	R	E	G	O	T	E	A	M	S	E	E	R	O	S	M	O	N	D
L	O	R	E	S	A	R	A	H	P	A	R	K	E	R	A	S	T	O	
P	L	E	N	U	M	T	H	A	I	S	E	R	M	O	N				
G	E	O	R	G	E	C	A	R	V	E	R	N	E	S	T	C	B	S	
A	N	S	E	L	A	R	E	A	R	U	G	L	L	O	S	H	E	A	
Y	T	D	B	I	L	L	I	E	K	I	N	G							
C	A	S	T	R	O	L	E	E	S	N	E	I	N	J	I	N	C	A	
A	R	T	H	U	R	D	O	Y	L	E	S	A	V	A	N	N	A	H	S
S	T	E	A	M	O	L	E	A	N		E	L	O	N					
A	L	A	M	O	W	I	L	L	I	A	M	W	I	L	L	I	A	M	S
B	A	D	E	R	R	T	E	O	N	I	O	N	T	E	X	A	S		
A	B	Y	S	S	Y	A	T	R	Y	A	N	S	E	R	E	C	T		



**KENTUCKY LIVESTOCK AND GRAIN MARKET REPORT**

KENTUCKY DAILY GRAIN PRICES - bids for next day					WEEKLY FEED INGREDIENT PRICE - bids for next day				
Wholesale prices, \$ per ton - Owensboro Grain KY									
Corn #2 Yellow - Louisville (6.57); Pennyrile (6.55-6.66)					Soybean Meal 48% sol .....400.00				
Soybeans #1 Y - Louisville (14.39); Pennyrile (14.59-14.60)					Soybean Hulls .....135.00				
Wheat #2 SRW - Louisville (6.35) Pennyrile (\$6.47-6.55)									

### Russell County Stockyards - April 09, 2020 \*Cattle weighed at time of sale.\*

Cattle Receipts: 470 Last Week: 1,228 • Last Year:0

STEERS - Medium and Large 1-2 (Per Cwt / Actual Wt)						COWS - Breaker 75-80% (Per Cwt / Actual Wt)					
Head	Wt	Range	Avg Wt	Price Range	Avg Price	Head	Wt	Range	Avg Wt	Price Range	Avg Price
6	390		390	150.00	150.00	9	425-440		432	146.00-152.00	149.13
15	457-492		477	135.00-149.00	143.69	15	571-572		571	135.00-146.00	143.06
4	300-320	313	170.00-175.00	171.70	18	513-542	525	145.00-150.00	146.90		
11	356-385	369	151.00-169.00	164.36	15	571-572	571	135.00-146.00	143.06		
3	430	430	160.00	160.00	1	630	630	130.00	130.00		
5	494	494	156.00	156.00	2	890	890	91.00	91.00		
1	520	520	149.00	149.00							
22	555-582	565	153.00-154.00	153.67	COWS - Boner 80-85% (Per Cwt / Actual Wt)						
14	652-686	676	130.00-136.00	131.65	Head	Wt	Range	Avg Wt	Price Range	Avg Price	
4	736	736	112.00	112.00	2	1610-1645	1628	56.00-58.50	57.24		
1	790	790	110.00	110.00	2	1450-1495	1473	61.00-64.00	62.48		
12	910-940	925	101.00-103.00	101.98	COWS - Lean 85-90% (Per Cwt / Actual Wt)						
4	972	972	94.50	94.50	Head	Wt	Range	Avg Wt	Price Range	Avg Price	
HEIFERS - Medium and Large 1-2 (Per Cwt / Actual Wt)						BULLS - 1-2 (Per Cwt / Actual Wt)					
Head	Wt	Range	Avg Wt	Price Range	Avg Price	Head	Wt	Range	Avg Wt	Price Range	Avg Price
5	220-247	242	134.00-142.00	140.54	1180-1645	1384	49.00-55.00	52.27			
3	280	280	129.00	129.00	830-1495	1156	52.00-61.00	57.67			
9	312-340	321	125.00-134.00	131.49	1095-1580	1338	48.00-52.00	49.64			
12	365-385	378	125.00-130.00	129.20	COWS - Lean 85-90% (Per Cwt / Actual Wt)						
14	423-445	428	125.00-134.00	129.28	Head	Wt	Range	Avg Wt	Price Range	Avg Price	
10	452-455	452	127.00-130.00	127.30	6	775-1135	896	42.00-50.00	45.00		
23	515-535	526	120.00-125.00	121.39	1	1010	1010	49.00	49.00		
6	610-620	614	96.00-105.00	101.80	BULLS - 1-2 (Per Cwt / Actual Wt)						
7	653	653	99.00	99.00	Head	Wt	Range	Avg Wt	Price Range	Avg Price	
3	796	796	90.00	90.00	2	1430-1540	1485	79.00-84.00	81.59		
5	849	849	91.00	91.00	1	1990	1990	91.00	91.00		
1	880	880	90.00	90.00	BULLS - 1-2 (Per Cwt / Actual Wt)						
6	4400	4400	125.00	125.00	Head	Wt	Range	Avg Wt	Price Range	Avg Price	
BULLS - Medium and Large 1-2 (Per Cwt / Actual Wt)						BULLS - 1-2 (Per Cwt / Actual Wt)					
Head	Wt	Range	Avg Wt	Price Range	Avg Price	Head	Wt	Range	Avg Wt	Price Range	Avg Price
4	210-226	222	140.00-152.00	142.84	2	1430-1540	1485	79.00-84.00	81.59		
2	295	295	165.00	165.00	1	1990	1990	91.00	91.00		
10	330-337	331	158.00-160.00	158.41	BULLS - 1-2 (Per Cwt / Actual Wt)						

Source: USDA-Kentucky Dept of Ag Market News, Louisville, KY • Mike Bell, Market Reporter, 502-782-4139  
 24 Hour Toll Free Market News Report 1-800-327-6568 • www.ams.usda.gov/mnreports/SV\_LS168.txt  
 \*This report reflects prices of the majority of cattle with a USDA grade, weight and sex on this sale date. This report does not represent all animals at the sale on that date.\*

TO SPONSOR THIS SPACE, CALL 270-866-3191



**First National Bank**  
 THREE LOCATION TO SERVE YOU:  
 Main Office: Junction of Hwy. 127 & 80 • Downtown Branch: Corner of Main & Wilson St.  
 South Branch: S. Hwy. 127  
 HOURS: M-Th. 8:30-4:00 • Fri. 8:30-6:00 • Drive-thru: M-Th 8:00-4:00 • Fr. 8:00-6:00  
 Sat. Main Office Drive thru 8:30-12:00 Noon  
 www.fnbrs.com • 866-4343






**BANK OF JAMESTOWN**  
 THREE LOCATION TO SERVE YOU:  
 MAIN OFFICE - 400 Monument Sq., Jamestown  
 INDUSTRIAL OFFICE - 2115 N. Main St., Jamestown  
 EAST 80 OFFICE - 43 Hwy. 910, Russell Springs  
 270-343-3186 • www.bankofjamestown.com