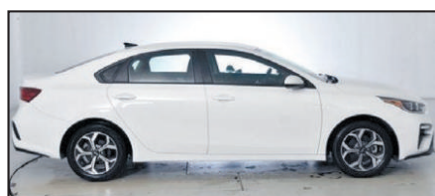


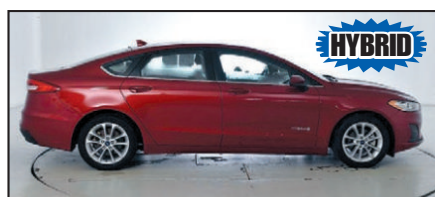
We're OPEN!

WE ARE ABIDING BY ALL CDC REGULATIONS FOR THE SAFETY OF ALL OUR CUSTOMERS AND EMPLOYEES.



2019 KIA FORTE
LXS, Camera,
Keyless Entry,
Low Miles.
#U20981610

ALL COME WITH COMPLIMENTARY 2 YR/24,000 MILE MAINTENANCE



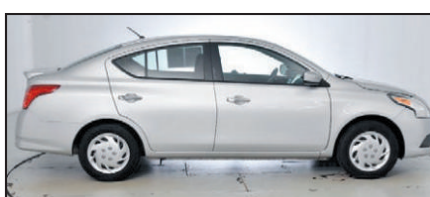
2019 Ford FUSION
SE, Camera,
Keyless Entry,
NAV w/Voice.
#U20981660

ALL COME WITH COMPLIMENTARY 2 YR/24,000 MILE MAINTENANCE



2020 Toyota CAMRY
LE, Camera,
Bluetooth,
Keyless Entry.
#U20982840

ALL COME WITH COMPLIMENTARY 2 YR/24,000 MILE MAINTENANCE



2019 Nissan VERSA
SV, Camera,
Keyless Entry,
Low Miles.
#U20982360

ALL COME WITH COMPLIMENTARY 2 YR/24,000 MILE MAINTENANCE



2018 Toyota COROLLA
LE, Camera,
Gas Saver.
#U20982850

ALL COME WITH COMPLIMENTARY 2 YR/24,000 MILE MAINTENANCE



2019 Dodge GR. CARAVAN
GT, FWD,
Camera,
Stow-N-Go Seats.
#U20981930

ALL COME WITH COMPLIMENTARY 2 YR/24,000 MILE MAINTENANCE



2017 Nissan FRONTIER
S, AWD,
Bluetooth,
Only 41k Miles.
#U20983011

ALL COME WITH COMPLIMENTARY 2 YR/24,000 MILE MAINTENANCE



1085 N. Dixie Hwy. Elizabethtown **270-506-4047**
www.swopetoyota.com



TODAY'S THE DAY EVENT!

Hurry! Offers End September 30

For all Toyota offers

buyatoyota.com

HIGHLANDER 	any all-new 2020 HIGHLANDER (includes Hybrid) \$2000 CUSTOMER CASH ² -or- 1.9% for 60 Mos. ³ APR Financing	\$279 Per Mo.	-or- Lease an all-new 2020 HIGHLANDER L 8-Speed AT ECT 4-Door FWD SUV Gas Model #6935 \$279/mo. 3-Year 10,000-Mile/Yr Lease 36 Mos. \$2999 Due at Signing
CAMRY 	any new 2020 CAMRY, CAMRY HYBRID, CAMRY AWD or CAMRY TRD \$2000 CUSTOMER CASH ² -or- 0% for 60 Mos. ⁵ APR Financing	\$209 Per Mo.	-or- Lease a new 2020 CAMRY LE 8-Speed AT ECT-i 4-Door FWD Sedan Gas Model #2532 \$209/mo. 3-Year 10,000-Mile/Yr Lease 36 Mos. \$2999 Due at Signing <small>Includes \$700 TFS Lease Subvention Cash.</small>
RAV4 	any new 2020 RAV4 (excludes Hybrid) \$1750 CUSTOMER CASH ² -or- 0% for 60 Mos. ⁵ APR Financing	\$199 Per Mo.	-or- Lease a new 2020 RAV4 LE 8-Speed AT ECT-i 4-Door FWD SUV Gas Model #4430 \$199/mo. 3-Year 10,000-Mile/Yr Lease 36 Mos. \$2999 Due at Signing
COROLLA 	any new 2020 COROLLA (includes Hatchback) \$1750 CUSTOMER CASH ² -or- 0% for 60 Mos. ⁵ APR Financing	\$179 Per Mo.	-or- Lease a new 2021 COROLLA LE CVT 4-Door Sedan Gas Model #1852 \$179/mo. 3-Year 10,000-Mile/Yr Lease 36 Mos. \$2999 Due at Signing
TACOMA 	any new 2020 TACOMA (Excludes TRD Pro & Model 7593) \$1000 CUSTOMER CASH ² -or- 1.9% for 60 Mos. ³ APR Financing	\$179 Per Mo.	-or- Lease a new 2020 TACOMA SR 4X4 DBL CAB 6-Speed AT ECT-i 4-Door Pickup Truck Model #7594 \$179/mo. 3-Year 10,000-Mile/Yr Lease 36 Mos. \$2999 Due at Signing

0% for 60 on 9

APR FINANCING

MONTHS⁵

MODELS

Good on the new 2020 Toyota models listed below

Camry • RAV4 • Corolla • Prius Liftback • Camry Hybrid
Avalon • Corolla Hatchback • Avalon Hybrid • Supra

Excludes RAV4 Hybrid and Corolla Hybrid

PLUS \$500 TFS APR SUBVENTION CASH ON 2020 CAMRY HYBRID & COROLLA HATCHBACK!¹⁰

ALL-NEW 2021 VENZA

219 Net HP | **565** Mile Driving Range¹¹

4RUNNER

any new 2020 4RUNNER (Excludes TRD PRO)

\$1000 CUSTOMER CASH²

TUNDRA

any new 2020 TUNDRA (Excludes TRD PRO)

\$2250 CUSTOMER CASH²



VISIT YOUR LOCAL KENTUCKY TOYOTA DEALER TODAY!

SWOPE TOYOTA

Elizabethtown, KY • 1-800-999-7591



Expanded Toyota Military Rebate Program For MILITARY PERSONNEL & THEIR FAMILIES

\$500 OVER & ABOVE ALL OTHER INCENTIVES!¹²

★ NOW INCLUDES ALL RETIRED MILITARY ★ (Regardless of Time Since Retirement)

★ ACTIVE-DUTY & INACTIVE RESERVE ★ MILITARY PERSONNEL

★ HONORABLY DISCHARGED VETERANS ★ Within 2 Years of Service See dealer for details.

Ask about the

\$500 COLLEGE GRAD REBATE PROGRAM¹³
OVER & ABOVE ALL OTHER INCENTIVES!



Every New Toyota Comes With ToyotaCare.¹⁴
Toyota's No Cost Maintenance Plan.

1. Toyota vehicles and components are built using U.S. and globally sourced parts. 2. Customer Cash direct from Toyota Motor Sales, U.S.A., Inc. 3. New 2020 Highlander (includes Hybrid) & new 2020 Tacoma (excludes TRD Pro & Model 7593) 1.9% APR For 60 Months with \$17.48 per \$1,000 borrowed. 4. All-New 2020 Highlander L FWD Model 6935. Lease based on net cap cost of \$31,596. Lease end purchase option \$23,425. 5. New 2020 Camry (includes Hybrid), RAV4 (excludes Hybrid), Corolla (excludes Hybrid), Corolla Hatchback, Prius Liftback (includes AWD & Excludes Plug-in and Prime), Avalon (includes Hybrid) & Supra 0% APR For 60 Months with \$16.67 per \$1,000 borrowed. 6. New 2020 Camry LE Model 2532. Lease based on net cap cost of \$21,650. \$700 Toyota Financial Services Lease Subvention Cash included in lease deal. Lease end purchase option \$14,139. 7. New 2020 RAV4 LE FWD Model 4430. Lease based on net cap cost of \$24,034. Lease end purchase option \$17,806. 8. New 2021 Corolla LE Model 1852. Lease based on net cap cost of \$18,248. Lease end purchase option \$13,102. 9. New 2020 Tacoma SR 4x4 Double Cab Model 7594. Lease based on net cap cost of \$29,807. Lease end purchase option \$27,620. 10. \$500 TFS APR Subvention Cash valid on new 2020 Camry Hybrid & Corolla Hatchback APR Offers only and must be applied to deal. 11. The all-new 2021 Venza EPA 40 city/37 hwy/39 combined mpg estimates. Actual mileage will vary. Preliminary-estimated total driving range with a full tank of gas as determined by Toyota. Based on 45% highway, 55% city driving. Actual mileage and total driving range will vary. 12. Qualified military personnel and household members of eligible qualifying military personnel are eligible for rebates in addition to all other incentives, depending on model, through Toyota Motor Sales, U.S.A., Inc., when leased or financed through Toyota Financial Services. Must take retail delivery from select new dealer stock. The Toyota Military Rebate Program is not compatible with the Toyota College Rebate Program. See participating dealer or visit buyatoyota.com for complete details. 13. The Toyota College Rebate Program is not compatible with the Military Rebate Program. See participating dealer or visit buyatoyota.com for complete details. 14. ToyotaCare covers normal factory scheduled maintenance for two years or 25,000 miles, whichever comes first. Certain models require a different maintenance schedule as described in their Maintenance Guide. 24-hour roadside assistance is also included for two years and unlimited mileage. Roadside Assistance does not include parts and fluids, except emergency fuel delivery. See Toyota dealers for details and exclusions. Valid only in the continental U.S. and Alaska. *For 3 & 5 - Subject to approved credit - see dealer for terms and conditions. For 4, 6, 7, 8 & 9 - NO SECURITY DEPOSIT. Subject to approved credit through Toyota Financial Services. Not all customers will qualify - Tier 1 PLUS customers ONLY. Excludes state and local taxes, tags, registration and title, and insurance. Ohio sales tax due at lease inception. License and applicable fees are extra. Other options and dealer charges extra. Your payment may vary depending on final price. Lessee may be charged for excessive wear based on Toyota Financial Services standards for normal use and for mileage in excess of 30,000 at the rate of \$0.15 per mile (10K low mileage lease). \$350 Disposition Fee is due at lease termination. For 2, 3, 4, 5, 6, 7, 8, 9, 10, 12 & 13: Must take retail delivery from new 2020 and 2021 dealer stock between 9/1/20 and 9/30/20. See participating dealer for complete details. Individual dealer prices and document fees may vary. Offers may vary by region. VEHICLE IMAGES USED FOR ILLUSTRATION PURPOSES ONLY. Expiration for these offers is 9/30/20.