



© Copyright 2018 BankPlus
 Equal Housing Lender

Commitment to community is one of our core values.

BankPlus is committed to building strong communities throughout Mississippi by improving quality of life and making a positive difference where we live and work.



Hinds County employees returning to work

Special to The Clinton Courier

The Hinds County Board of Supervisors met with other Hinds County leaders and elected officials several days last week to discuss a unified strategy to begin transitioning employees back to work during a phased resumption of normal government operations. Though Hinds County courthouses and essential offices have remained open the entire duration of the state Shelter in Place and Safer at Home orders, it has been with limited public access.

On Monday, May 11, at least fifty percent of Hinds County employees, who have been sheltering in place and/or working remotely, will return to their work stations. The Board of Supervisors has implemented several measures to boost public and employee safety. These measures include physical changes, such as retrofitting partitions and strategic placement of floor markings and signage reminders of CDC recommended practices for public

health and safety, to workspaces in offices and departments that have high foot traffic

Upon their return to work, employees are being asked to:

- Go through a temperature screening every day when they report to work,
- Wear a face covering at all times while in the building,
- Regularly sanitize their work stations, and
- Wash their hands at least once every hour.

The public is also being asked to wear a face covering when entering any Hinds County building.

During these uncertain times surrounding the COVID-19 crisis, Hinds County officials say they are continuing to work hard and prioritizing the safety, well-being, and security of employees and every citizen who visits a county building.

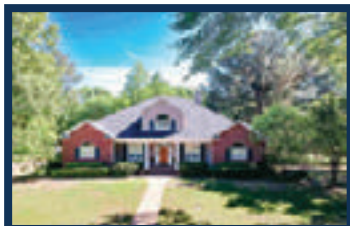
For more information, contact Jennifer Riley Collins, Hinds County Administrator, at 601-968-6501.



GODFREY MCHANN REALTY, INC.

601-326-3333

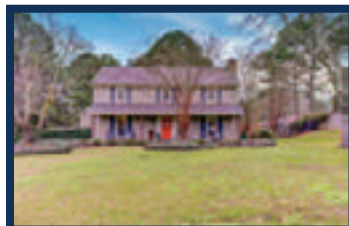
“ALL THINGS REAL ESTATE”



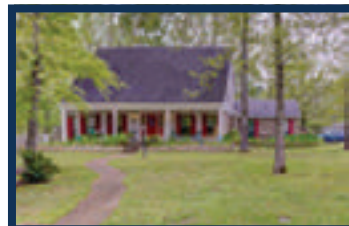
SOUTHERN OAKS
 \$405,000-4BR/4BA
 Mark McNeece
 601-214-1949



UTICA
 \$139,500-3BR/1.5BA
 Mark McNeece
 601-214-1949



COUNTRYWOOD
 \$234,900-4BR/2.5BA
 Bracey or Karen Godfrey
 601-832-3971



CASTLEWOODS
 \$259,000-4BR/3BA
 Lee Irwin
 601-259-5544



PINEHAVEN PLACE
 \$319,900-5BR/2.5BA
 Bracey or Karen Godfrey
 601-832-3971



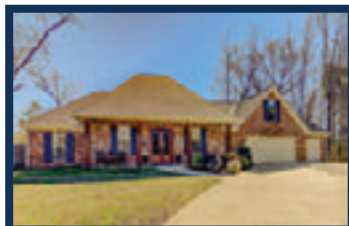
CAMBRIDGE COVE
 \$229,900-4BR/2BA
 Bracey or Karen Godfrey
 601-832-3971



WINDSOR PLANTATION
 \$334,250-4BR/3BA
 Lee Irwin
 601-259-5544



WINDSOR PLANTATION
 \$345,500-3BR/2BA
 Lee Irwin
 601-259-5544



GLEN ARBOR
 \$364,000-5BR/2.5BA
 Bracey or Karen Godfrey
 601-832-3971



WINDSOR PLANTATION
 \$351,150-4BR/3BA
 Lee Irwin
 601-259-5544

Like Us on Facebook 

For more listings, visit our website: GodfreyMchannRealty.com

