

Editorial page

Nolia's Notes

I like to hunt!

by NOLIA BIGGERSTAFF



I pulled out of our driveway and it was early. My friend, Pat Thomas, was with me and we were on an adventure. We were going shopping!

Now, friends, our definition of shopping does not necessarily equate to buying! We might purchase something but we were going to enjoy the "hunt" more than anything.

She and I traveled to our first store. We wheeled into a parking spot and off we went. "Remember to look for so and so," Pat would say. "Remind me to check for so and so," I would say. "I will meet you at this spot if we get separated."

Most of the time, though, Pat and I stick together in the store because we like to bounce ideas around with each other. "Do you like this color, will it work?" I might ask her. "Whatcha think about this?" Pat might ask. Then one of us will ask, "Are we finished here?" Then we head to the car, sometimes with a package, sometimes empty handed but with knowledge of what we might purchase on a future trip.

We head to another store and repeat the above. "You hungry?" I ask. "Nope," Pat answers. "Me neither," I say back to her, and we shop on and on for a few more hours.

"You hungry?" Pat asks. "Nope," I answer. "Me neither," Pat says, and we shop on and on.

We hop into the car and I say, "I have a Moon Pie, want one?" "Yep, I'll take one," Pat says and then she says, "I bought us a Diet Pepsi, want one?" "Sounds good!" I say. We wash a mouthful of Moon Pie down with the Pepsi for a brief moment and off we go!

We managed to get home at a de-

cent hour that evening after traveling through, I believe about twelve stores. We ran all day fueled on a Moon Pie and Diet Pepsi! Never got hungry and never "missed a lick," as they say.

What a treat to spend the day with a good friend doing something we both enjoy. Men may be bewildered about this adventure, but they should equate women shopping to a day in the woods, hunting.

Women hunt for items in stores, much like a person would hunt for prey in the woods or country fields. What joy it brings to a woman when she finds that perfect pair of shoes or dress or something for which she has been longing to find! Much like the joy of a hunter spying that much sought after buck.

Women come home and take out their packages and admire what they have found. Much like a hunter, bringing home that buck in the back of the pickup truck for admiring buddies! Same thing! Exact, same thing.

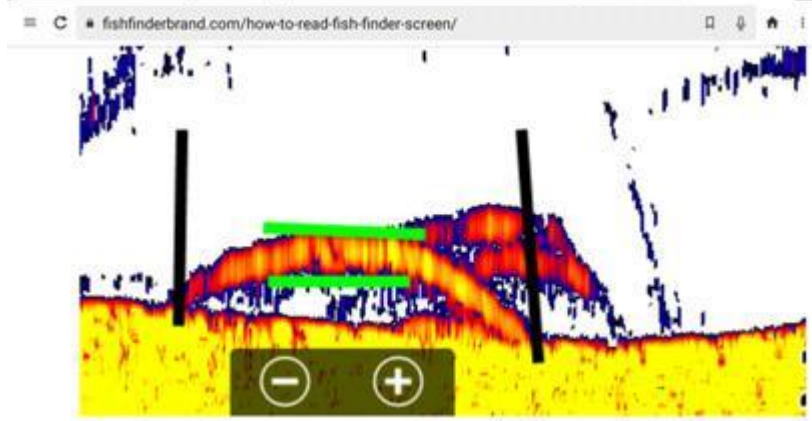
Pat found some items for her wreaths and I found some chairs, but we had no room for them so we left them in the store after much debate. "I could strap them to the top of the car," I said. Then I remembered the time I put horse manure in the trunk of our car. Dwaine was not pleased. Dwaine, my husband, sometimes frowns on my innovative ideas.

It looked like rain, anyway, so I was satisfied to leave them for another day. Pat said that it probably just wasn't meant to be. Oh, well. I that just means packing the Pepsi and Moon Pies and planning another hunting trip very soon!

Fishing This Week

Reading a Fish Finder Part 2

by Albert Moody



Continuing our series on reading and understanding your fish finder let's take a look at this image of two large fish. In the picture above you will see too long marks. These fish are more than likely to be large catfish. The reason we would assume they are catfish is their proximity to the bottom. The reason we assume they are large is the length and the amount of light coloring in their midsection. The ground underneath them is dense and shows up in yellow. This should also tell you the yellow in their midsections shows density as well. Sometimes you will see yellow or even green in their heads showing dense bone and skulls. This confirms that they are large fish. If you have the down scanning feature it will help to show if something is touching the bottom or slightly suspended like a fish. I like to turn my fish finder and

down scan on together to be able to compare both images.

Afternoon Fishing for Stripers and Hybrids

Keith Remkus - aka "Buddha"-took Tropical Bob Hockman and I fishing Tuesday. We went to troll Alabama and Umbrella rigs for striped and hybrid bass. Lures of choice were Captain Mack's #9 nine lure for umbrella rigs and an Alabama rig. Due to the amount of lures on the umbrella rig it is heavy enough to take your rig to approximately 18 foot depth with no weight using 40 pound test line. Since the Alabama rig is lighter weight due to less lures we put a 2 ounce egg sinker above the rig itself. This will carry it down to approximately 25 feet. We tried to keep our speed at approximately 2 mph. We fished from 1:00 PM until 4:00 PM and caught 17 fish overall. Several of the fish we caught were in the 4 1/2-6 pound range with most being around 2-3 pounds. Tropical Bob had the hottest rod of the day catching 2 fish on one lure at the same time twice.

Bad fishing joke of the week: Why didn't Noah fish while on the Ark? He only had 2 worms.

Aycock benefit fund

A benefit fund has been set up at Farmers State Bank for Laney Aycock to help with medical and other expenses as she battles Hodgkin's Lymphoma.

Laney is a lifelong resident of Lincoln County, is employed by Lincoln County OES and Gold Cross Ambulance Service as an EMT.

Donations can be made at Farmers State Bank or mailed PO Box 99, Lincolnton, GA 30817.



The Pastor's Corner

A Weekly Column from Lincoln County Clergy

Listless Listener

Rev. Bart Grey, Bethany and Pine Grove United Methodist Churches



James 1:22

It is so easy sometimes to find ourselves listening to speeches or lectures and find that we hear the words and ignore the content. Sadly, I find that this sounds a lot like church. In the Scripture reading, I think James feels the same way. James is warning against being a listless listener. Listless listeners are those who can endure a speech, lecture, or a sermon without purposing to do a thing with the information. A listless listener can mistake hearing and learning for obeying God. They hear the message and fail to do anything with it. Many of these listeners think they get credit just for showing up.

Last summer while many of us were holding parking lot church because of COVID, I came across a phrase in a study that caught my attention. The phrase is a "False Christian or a Fake Christian?" What in the world is a False Christian? It sounds like an oxymoron, right?

Well, after some study of this

phrase, I came up with the definition that False Christians are people pretending to be Christians for many different reasons. Some attend church for political gain. Ever notice how politicians get very "churchy" at election time? Some people attend church because of how it makes them look to fellow church members while others attend church because of how it makes them look in the community. Surprisingly, there are a lot of them in the church. These people are the ones with very shiny halos. They are the ones who are there every time the doors are open, big givers, small givers, they pray, look up Scriptures, attend committee meetings, sing hymns, throw out an Amen every once in a while, maybe a "Preach it brother," and then leave the service and go back to living like they did when they came in; no change, no experience with the Holy Spirit, no passion, dead and flat. Simply going through the motions but not having a clue about

why they are there. Listless listeners occupy a pew and look good doing it but it is all head knowledge... their heart is empty and cold.

Listless listeners will find that their worship is worthless. James tells us not to deceive ourselves... do not merely listen to the word but to be DOERS of the Word. James says that the man who looks intently to the perfect law that gives freedom, not forgetting what he has heard, but doing it...being a DOER, he will be blessed in what he does.

So, what do we do when we become doers? We share the Gospel of Jesus Christ, we share the good news, we share our story. God wants us to hear the message, to absorb it, take it to heart and then apply it to our lives. Christianity is not just about believing certain things or claiming to have faith...it is having your life transformed by the Gospel. It is not just hearing the Word, it is also doing it, displaying it, and living it. It is getting

excited about Jesus, it is about letting go and letting the Holy Spirit fill you, it is about getting happy in Jesus and not just in church, but when you leave and go out into the world. Worship is about the experience of being in the Presence of Jesus and being changed. If you don't feel that every Sunday, you have missed the point. Come on Sunday morning expecting something to happen and then share with others what God is doing in your life.

James warns against listless listening. It will kill a church. Worship is about hearing the Word, learning new truths, celebrating God's perfect good gifts, celebrating God's grace, celebrating your salvation and THAT good and perfect gift, getting wrapped up, tied up, and tangled all up in Jesus, then going out into the world and living that experience. Don't be a listless listener, be a doer of the Word and if you do, James says you will be blessed. Amen? Amen!



Fall Lawn Chores

By Robyn Stewart
Lincoln County Extension Service



As September rolls along (can you believe it's halfway over already?) and a hint of fall starts to appear, it's time to start thinking about fall lawn chores to maintain and improve your turfgrass this winter and next season. Here are a few tips on things to check off your list this fall to help maintain a beautiful lawn throughout the seasons' change.

First and foremost, it's not time to put your mower away quite yet. Warm season turfgrass won't go dormant until our first hard freeze, so it's still growing- even if it's slowed down quite a bit. Be sure to mow to the correct grass height for the species you have, as preferred height ranges from 0.5" to 3". Cutting grass too short can obstruct or damage the root system of the turf which makes it more susceptible to stress, but keeping grass too long can introduce a host of disease and fungal issues.

In addition to mowing, be sure to remove any leaves, pine needles, thatch, or anything else that's accumulated on your lawn. Anything that blocks out sunlight and traps moisture can kill turfgrasses and contribute to disease and insect issues. Whether you rake leaves and other organic matter gradually throughout the fall or all at once near the end, your goal is the same: prevent a layer of leaves from killing your grass!

Once you've mowed and raked, consider aerating your soil, particularly if you have heavy clay content. Aeration does not need to happen

every year but can be done every 3-4 years. This process helps reduce compaction, break up thatch, and improve oxygen, nutrient, and water absorption by your lawn. Typically, you should aerate before applying any fall fertilizer or seed.

Two more fall chores for lawn care are overseeding and fertilizing. You may choose to overseed cool-season ryegrass into warm season bermudagrass, which maintains a pretty green lawn throughout the cooler months. This will require you to mow through the winter, however, and many folks aren't interested in doing so. Whether you choose to overseed or not, be sure to apply an appropriate fertilizer after you've mowed for the last time. Select a fertilizer with a lower amount of quick-release nitrogen and look for higher potassium and phosphorus to help improve grass vigor as it heads into (and back out of) dormancy.

A final chore to complete this fall is weed control. We are in the prime time of year to put out pre-emergent herbicides to reduce weed pressure of winter annuals like bluegrass, henbit, and chickweed. Pre-emergent herbicides lay on the soil and prevent the germination of weeds as they try to grow. If you miss the window to apply them, you will need to rely on spot-treatments of post-emergent herbicides or manual removal of weeds this winter to ensure a healthy lawn in the spring.

If you have fall lawn care questions, please let us know at uge3181@uga.edu.

Letters to the Editor

Unjustified tax increase

TO THE EDITOR:

I am writing to question the dramatic increase in the proposed 2021 property taxes for the Saddlebrook Farms subdivision on the outskirts of Lincolnton.

The fair market value (FMV) of the properties with residential housing suddenly surged in 2021 by an average of 20 percent after only one of them experienced an increase in the prior year. The total increase in FMV for Saddlebrook Farms was over \$600,000 with an average increase of \$60,000 per residence. The FMV for the property at 1025 Saddlebrook increased an absurd \$73,400 despite decreasing \$8,600 two years earlier. The increase FMV for the property at 1036 Saddlebrook was 21 percent in both 2019 and 2021 amounting to an increase of \$139,000 in FMV over two years though the 2019 assessment was reduced by half on appeal. Even with favorable action on the appeal the property tax increase was over \$900.

These are not new homes. The first house in the subdivision was built in 2001 while the average house is 17 years old. Saddlebrook Farms has no community clubhouse, swimming pool, tennis courts or nature trails and not even customary sidewalks or street lights and there are no plans to provide either of the latter two even to insure safety. The roadway has no markings which makes driving a night treacherous. When walking residents must dodge horse traffic, eighteen-wheelers, tractors, golf cars, delivery vehicles, motorcycles, electric scooters, cars, and pickup trucks. Half of the properties have no city sewer or police protections and must rely on a volunteer fire department.

What developments in Lincoln County justify a 20 percent increase in FMV in the middle of a pandemic? Twenty percent annual increases will result in a \$400,000 house today with a FMV over \$800,000 in a mere four years the average cost of a house in California.

Lincoln County does not seem to be on the verge of an economic

revival that would support a surge in demand for \$400,000 home. Thought the population data is disputed the official statistics, the 2020 US Census, show a 3.8 percent decline in population in Lincoln County and declines in adjacent counties.

In Lincoln County residents can do little about the tragic events surrounding the withdrawal of troops from Afghanistan, the three trillion dollars of deficit spending by the Biden administration, the continuing violence in major US cities or the flow of illegals and drugs over the southern border but we can maintain race relations based on mutual respect, honor local law enforcement, patronize local businesses, and avoid the California approach to taxation that has led to unaffordable housing and mass exodus.

Saddlebrook Farms is a beautiful setting with friendly neighbors but the above described tax increase seems unjustified and will discourage home ownership and provide incentives for residents to look elsewhere for affordable housing.

MICHAEL J. ZELLER

Boats4Kidneys.com

Donate your Boat to help
people needing organ
transplants on
MatchingDonors.com

1-800-385-0422

City Pharmacy

114 Main St.
Lincolnton
359-3618
**NOW OPEN
UNTIL 5:30 P.M.
ON WEDNESDAYS.**

**We accept
most insurance
plans.
We offer the
lowest prices!**

Chamber News

Scarecrow contest continues

Competition heats up! Area and chamber businesses who have signed-up and are starting Scarecrows so far are, 112 on Main Street, B&J Appliance & Signs, Betbee's Boutique, City Tire & Auto Services, City Hall, City Pharmacy, Goldman & Wengrow's Clothing Store, Habanero's Mexican Grill, Jericho Florist, Law Firm of Benjamin Jackson, Lincoln County Development Authority, Lincolnton Optical, Lo & Gussie's Boutique, Mad House Marketing, The Master's Closet, New Era Salon, Rick & Company Salon, Savi Boutique, and The Uptown Peach Company.

Your Lincolnton-Lincoln County Chamber of Commerce has opened this year's 2021 Scarecrow competition entries to all area businesses to register in this fun challenge. Entry dates are open now until October 20th!

Simply contact Chamber Events Director Tootsie Wright at events@lincolngachamber.org for a scare-

crow entry form to be dropped off with your official scarecrow voting box. Entry fees are free for chamber member businesses or \$50 for non-members. (New/renewing chamber business memberships are always welcome! Join at www.lincolngachamber.org.)

Once registered, decorating and voting can start immediately! \$1 = 1 Vote (unlimited voting allowed). Voting boxes inside participating area businesses.

On-going voting ends Friday, October 22, at noon. Voting dollars collected will go toward music entertainment and the grand prize winner!

Scarecrow grand prize winner will be announced Saturday, October 23, at downtown Lincolnton's Moonlight Market Madness (4-8 p.m.): late-night shopping with music and dancing-in-the-street to follow!

So, join-in and get creative! Rally your friends and families to vote! And may the best scarecrow win!

The Lincoln Journal

Established in 1893
The Official Organ of Lincolnton and Lincoln County
(USPS 313-660)

Published every Thursday in Lincolnton, Georgia
SUBSCRIPTION RATE

One year in Lincoln County - \$26.00
Wilkes, Taliaferro Counties - 26.00
Outside three-county area - \$41.00
(includes 8% state and local sales tax)

Periodicals postage paid at Lincolnton, Georgia
POSTMASTER: Send address changes to:
The Lincoln Journal, P.O. Box 399
Lincolnton, Georgia 30817
706-359-3229

Email us at: journal@nu-z.net
Visit us online at www.lincolnjournalonline.com