

Ms. Santa Candidates



Ms. Santa Candidates 2022 Front Row left/right Madison Vandeveld(FFA), Cheyenne Robertson(Educators Rising), Mia Best (Pep Club), Hannah King(DECA), Alexa Stephens(Art Club) Back Row left/right Karle Carter (Skills Club), Hadleigh Parrish (Devotion Club), Maddie Grant(Drama Club), Halle Burton(Cooking Club), Breanna Trautman(True Crime Club) Not Pictured: Summer Sapp(TSA) and Madison Smith(HOSA)''

11-24-22

Super Crossword

EASY-PEASY

- ACROSS**
1 Conceptual framework
7 Nickname of jazz pianist Earl Hines
12 Cat feature
16 Mailbox item: Abbr.
19 Cajoles
20 Backcountry
21 Actor Alan
22 Before
23 Saving a Hilton from being demolished?
26 Rove (about)
27 Eisenhower, informally
28 Dawn deity
29 Country that's the setting of a story told by Jesus?
31 Confusion when a golfer can't find the club for the green?
36 2000-15 CBS show
37 Two racing Unsers
38 Strike — (do some modeling)
39 Admission of defeat
41 "The way things now stand ..."
- DOWN**
1 Italian tenor
2 Devise, as a plan
3 Would really rather not
4 Application filename extension
5 Actor Gibson
6 According to
7 Not stale
8 Vienna's nation: Abbr.
9 Two after uno
10 Persists in discussing
11 Thomas — Edison
12 British bye-byes
13 Perp's excuse
14 Revered one
15 Narrow road
16 Groups of trial lawyers
17 Fleeting quality
18 Comic Foxx
24 Mythical bird
25 Bitterly cold
30 Jungle den
32 Recipe qty.
33 Always
34 Assistance
35 Bullring holler
40 Sky light
41 40-Down studier's sci.
42 Eyelid malady
- ACROSS**
44 Road named for a head of state?
50 Intent
53 Golf average
54 Mental sharpness
55 Santa — winds
56 One who's bad at playing practical jokes?
62 Richard of "The Jackal"
63 Former AT&T rival
64 Creepy
65 Tax audit org.
66 Hunchback creator Victor
67 Belgian river
68 Favorite crucifix style?
74 "I seel," facetiously
77 Match units
78 Cruise of "Top Gun"
79 Actress Bette
83 No, in File
84 DVR choice
85 Evangelizing in remote areas?
89 Fast internet svc.
90 Final words from a bully
92 Tirana's nation: Abbr.
93 Picnic pest
- DOWN**
94 Subatomic matter that may or may not exist?
101 "Penn & Teller: —" (TV series)
102 Maui "hello"
103 Hunter constellation
107 Three in "minimum"
108 Big tea vessel
110 Aviator who was really courageous?
114 Little squeeze from a fuddy-duddy?
118 Grain variety
119 NASA's Eagle, e.g.
120 Suffix with resin or riot
121 Forehead border you had before you started going bald?
126 — kwon do
127 Coal source
128 Door reply to "Who's there?"
129 Most current
130 Antiquated
131 Fax, e.g.
132 "The battle —!"
133 Provides, as with power
- DOWN**
43 One of a flight of steps
45 MPG monitor
46 USA's Uncle
47 A Gershwin
48 Be an omen of
49 Feudal vassal
50 Big galoot
51 Outrage
52 Impair
57 Frank Sacks' "— the Unicorn"
58 Plunk lead-in
59 Helpful hints
60 Get it wrong
61 "— Be My Girl" (top 5 tune for the O'Jays)
66 Source of CBD oil
67 "Right on!"
69 Ancient Egyptian god
70 Dwarfs' count
71 Vodka brand, familiarly
72 In support of
73 Govt. health agcy.
74 "— you act now ..." (informercial segue)
75 Is unrivaled
76 Hardly ever employed
80 By way of
81 Hostel
82 Mil. officer
84 Bean curd
85 Touch
86 Traitor
87 Yale alum
88 "The Good Doctor" aier of
91 Virgin Mary's mother: Abbr.
95 Actress Lanchester
96 Many #1 songs
97 Calder Cup rink org.
98 Writer Santha Rama —
99 Email giggle
100 Verdi's "— tu"
104 Instead (of)
105 Danish port
106 Big Apple MLB squad
108 Coll. in Philly
109 Made grain-sized
111 Skater Sasha
112 Python in "The Jungle Book"
113 Scrabble 4-pointer
114 Hernando de —
115 Engine stats
116 A Great Lake
117 Roman 402
122 Sydney's state: Abbr.
123 Non- — food
124 Sprinted
125 "Inc." relative

1	2	3	4	5	6		7	8	9	10	11		12	13	14	15		16	17	18
19							20						21					22		
23						24							25					26		
27					28					29							30			
31			32	33				34	35			36						37		
38								39			40					41	42			43
			44		45	46	47						48	49						
50	51	52			53						54							55		
56			57	58				59	60	61			62					63		
64								65				66						67		
			68		69	70	71				72					73				
74	75	76			77					78					79		80	81	82	
83				84					85				86	87	88					
89				90				91					92					93		
94		95								96	97	98				99	100			
101								102								103		104	105	106
	107						108	109			110			111	112	113				
114				115	116					117				118					119	
120				121							122	123					124	125		
126				127						128							129			
130				131							132						133			

Snow Prince and Princess Candidates



RCMS Snow Princess Candidates
Layla West, Addy Abrell, and Makayla Bennett



Jamestown Elementary Snow Prince, Junior Gomez and Snow Princess, Kynlie Jasper

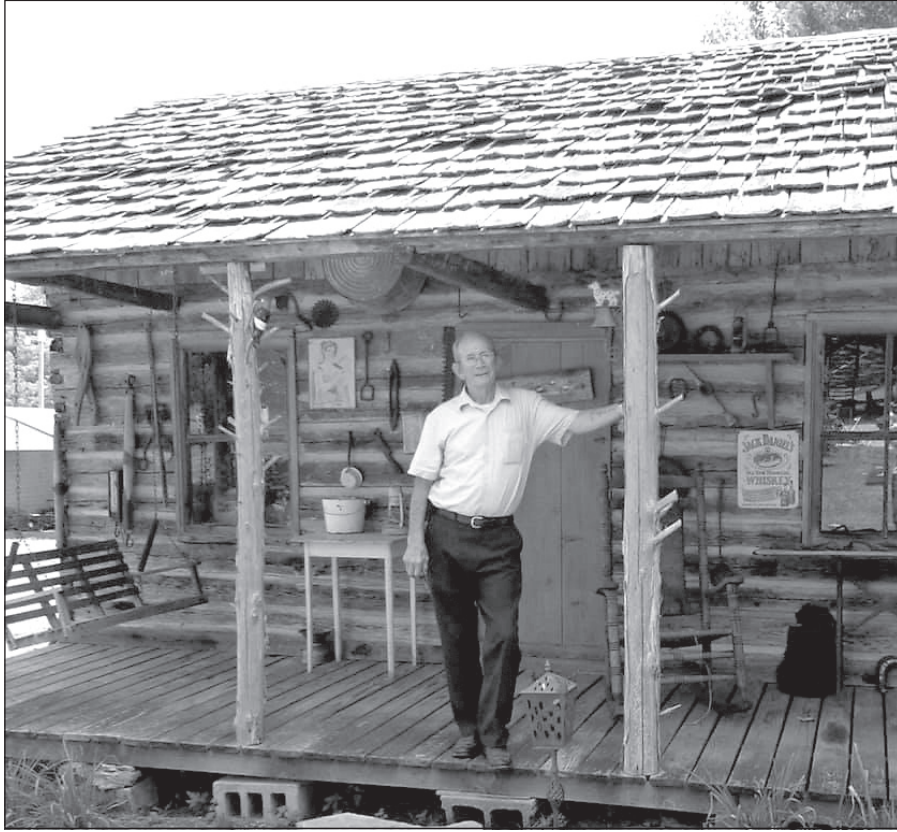


Russell Springs Elementary Snow Prince, Gavin Campbell and Snow Princess, Briley Bennett



Salem Elementary Snow Prince, Grant Wilson and Snow Princess, Molly Hammond

Fred Thrasher Art Collection Auction



Fred Thrasher

The legendary Fred Thrasher, a local artist form Clinton County, Kentucky whose works depicted the America of yesterday seen through the eyes of today, was a fixture of the art community for decades, with his final work coming in 2014.

The themes of nature, of home, and of times gone-by and our own fond recollections of them would go on to span across hundreds of paintings.

Certain themes would be revisited, often with a seasonal flair – the same setting would be revisited across all four seasons,

showing both the passage of time but also how each season affords it's setting its own specific charm and beauty. His "four seasons" collections would become some of his most prized works.

Describing his art, he once noted "with all the traffic and busy hustle of daily life, I feel that if I can take someone back to a place that's full of peaceful memories, even just for 5 or 10 minutes, I've accomplished something."

He would travel around, visiting and working with galleries, studios, festivals, state

fairs, and conventions to forge the relationships that would make his art a success and build the connections with those who enjoyed his work that, in many ways, was the true gift of his art career.

As a portion of the Fred Thrasher estate the collection will go online for auction just after Thanksgiving with the online auction closing at 6pm on Friday, December 9th on www.fordbrothersinc.com. For more details regarding this auction please call 606.256.4545.

JEFF JOBE, GROUP PUBLISHER
jjobe@johneinc.com
270-590-6625 Cell

COURTNEY DOUGLAS, SUSAN FORBES
Production Team Leaders
print@jpinews.com

RENEE DAFRON, GRAPHICS
renee@johneinc.com

CITIZEN-TIMES/SCOTTSVILLE OFFICE
Crissy Bryant, Graphic Designer

BARREN COUNTY PROGRESS/GLASGOW OFFICE
270-659-2146

CUMBERLAND COUNTY NEWS/BURKESVILLE OFFICE
Greg Wells, Editor
Billy Guffey, Layout/Graphics
Jessica Pitcock, Office Mgr.
ccn@burkesville.com
270-864-3891 Office
J.R. Jessie, Sales
jrjessie@jpinews.com
270-861-9395

BUTLER COUNTY REPUBLICAN BANNER/MORGANTOWN OFFICE
Lynzie Embry, Managing Editor
sales@jpinews.com
270-792-4384

EDMONSON COUNTY NEWS/BROWNSVILLE OFFICE
Lynn Bledsoe, Reporter
Jessica Pitcock, Reporter
ednews@windstream.net
270-597-3115 Office
Lisa Tarter, Sales
lisa@johneinc.com

HART COUNTY NEWS HERALD/HORSE CAVE OFFICE
Mary Beth Sallee, Reporter
marybeth@jpinews.com
270-786-2676 Office

EDMONTON HERALD NEWS/EDMONTON OFFICE
PJ Martin, Editor
heraldnews@jpinews.com
270-432-3291 Office

TIMES JOURNAL/RUSSELL SPRINGS OFFICE
Wade Daffron, Editor
Lisa Coffey, Reporter/Office Mgr.
270-866-3191 Office
news@russellcountynewspapers.com
J.R. Jessie, Sales
jrjessie@jpinews.com
270-861-9395
jccrabbtree@jpinews.com

THE TIMES JOURNAL
USPS 617-680
Periodicals Postage Paid At
Russell Springs, KY 42642
Postmaster send change of address to
THE TIMES JOURNAL
PO Box 190,
Russell Springs, KY 42642

SUBSCRIPTION RATES:
In Russell and adjoining counties \$31.95 Both print and online
THURSDAY PAID
Out of County \$40.95 | Out of State \$55.95

The Times Journal is part of the Jobe news and advertising network; serving more homes in Allen, Barren, Butler, Cumberland, Edmonson, Hart, Metcalfe, and Russell than all others combined. Russell County's oldest continuous news source.

When you buy your
Prescription Medicines
from our pharmacy
you'll enjoy satisfying benefits!

Concerned About Hepatitis A?
Come by Jamestown Pharmacy and speak with one of our Pharmacists.

Jeff Warner, Holly Adams, Allie Williams

Along with Hepatitis A, we also provide vaccination for Hepatitis A & B, Pneumonia, Flu, and Shingles. These are covered by most health insurance plans.

Owner:
Jeff Warner

1417 North Main Street in Jamestown, KY
Phone: 270-343-4443
Hours: Monday - Saturday from 8:00am - 5:30pm
Saturday from 8:00am - 12:00pm