

People in Business

Community Bankers of Illinois hires CFO

Community Bankers Association of Illinois announced the hiring of Patrick Beveridge as chief financial officer.



Beveridge

He replaces Lisa Lippert, who retired as controller on Dec. 31, after 22 years with the association.

Beveridge most recently spent more than 16 years as the controller for the Springfield Pepsi Bottling company. Beveridge

also has experience in public accounting, including five years at Clifton Gunderson LLP, and he attended the University of Illinois, Champaign-Urbana, where he graduated with an accounting degree.

CBAI is one of the largest state banking associations in the nation. It is a professional trade association representing nearly 300 Illinois commercial banks and thrifts, and their 880 Illinois bank branches.

Chamber heads graduate from program

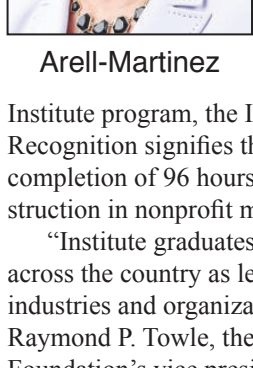
Institute for Organization Management, the professional development program of the U.S. Chamber of Commerce



Pfeil

Foundation, announced that two locale chambers of commerce executives have graduated from the program and received the recognition of IOM.

They are Wendy J Pfeil, president/CEO, of the Greater Belleville Chamber of Commerce, and Debbie Arell-Martinez, president/CEO of the O'Fallon-Shiloh Chamber of Commerce.



Arell-Martinez

Awarded to all graduates of the

Institute program, the IOM Graduate Recognition signifies the individual's completion of 96 hours of course instruction in nonprofit management.

"Institute graduates are recognized across the country as leaders in their industries and organizations," said Raymond P. Towle, the U.S. Chamber Foundation's vice president of Institute for Organization Management.

Goldenberg firm adds Wallace as attorney

Edwardsville-based Goldenberg Heller & Antognoli welcomed Steven Wallace to the firm. Wallace will join the firm's business and commercial law practice, additionally focusing on real estate law.



Wallace

Prior to graduating from St. Louis University School of Law in 1988 and beginning his legal career,

Wallace was a lending officer for two commercial banks in Southern Illinois. He has more than 30 years of experience in the areas of commercial and individual bankruptcy, banking law, commercial litigation and asset protection planning.

Wallace has also been a speaker for the Illinois Institute for Continuing Legal Education, the Illinois State Bar Association, and the National Business Institute. Currently, he is a member of the Local Rules Committee for the United States Bankruptcy Court for the Southern District of Illinois as well as a contributor for West Publishing Corporation's Practical Law Toolkit, Southern Illinois Local Bankruptcy Rules.

Busey fills two key exec roles

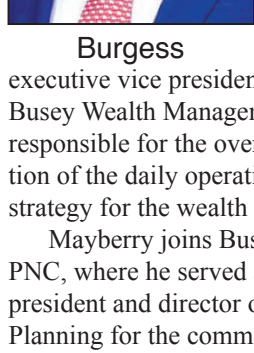
Busey Bank recently bolstered its leadership team with the addition of two high-level executives to lead its regional



Mayberry

banking and wealth management divisions.

Willie Mayberry takes on the role of executive vice president and president of Regional Banking, overseeing the bank's client facing sales teams and relationships managers across the footprint. This includes Commercial Banking, Wealth Management, Retail and Treasury Management.



Burgess

Jeff Burgess joined Busey as executive vice president and president of Busey Wealth Management. Burgess is responsible for the oversight and execution of the daily operations, vision and strategy for the wealth management team. Mayberry joins Busey Bank from PNC, where he served as executive vice president and director of Strategy and Planning for the commercial bank.

Burgess, a graduate of Vanderbilt University in Nashville, most recently served as president of Commerce Brokerage Services Inc. Previously, he was also director of Business Development for the east region of Commerce Trust Company after serving as group vice president of Sales Operations for Fisher Investments in Woodside, Calif.

Juneau Associates adds Schukar to team

Juneau Associates Inc. P.C. added Quentin Schukar, P.L.S. as professional land surveyor licensed in the states of Illinois and Indiana.



Schukar

Schukar will work out of the office in Granite City and has more than eight years of experience in the surveying industry. Prior to joining Juneau, he worked at a full-service land surveying and civil engineering firm. He received his B.S. in Construction Management with a specialization in Land Surveying from Southern

Illinois University Edwardsville.

Schukar is responsible for leading team members in the completion of boundary, topographical, route and utility surveys for private and government projects. He also performs quality assurance on projects and conducts reviews for adherence to Juneau standards and client specifications, as well as develops proposals and contracts.

HSHS Medical Group welcomes APRN

HSHS Medical Group welcomed Courtney Hutkowski, APRN, to the neurosurgery team. She sees patients at



Hutkowski

HSHS Medical Group Multi-specialty Care - St. Elizabeth's, which is located at 3 St. Elizabeth's Blvd., Suite 5000, in O'Fallon, Ill. The advanced practice registered nurse will work alongside Neurosurgeon Aziz Alali, MD, PhD. She completed a Master of Science in Nursing at Maryville University in St. Louis and a Bachelor of Science in Nursing from Southern Illinois University in Edwardsville. She also received a Bachelor of Science in Biology from McKendree University in Lebanon.

Rohwedder leading SIBA again this year

Hank Rohwedder, Hank's Excavating & Landscaping, Inc., Belleville, was re-elected as president of the Southern



Rohwedder

Illinois Builders Association, effective Jan. 1, 2022. Other officers for 2022 are: First Vice President Jeff Limbaugh, Limbaugh Construction Co. Inc., Granite City; Second Vice

President Scott Plocher, Plocher Construction Co. Inc., Highland; and Secretary/Treasurer Richard Boyer, Boyer Fire Protection, St. Louis.

Three-year directors elected are: Lyle Simonton, Subsurface Constructors Inc., St. Louis; Jon Carroll, Poettker Construction Co., Breese; and Thomas Cramer, Casper Stolle Quarry, Dupo. SIBA staff members are: Donna Richter, chief executive officer; Shannon Partington, executive assistant; John Holt, senior director of safety and education; Shari Schutzenhofer, administrative assistant; Stephanie Foster, administrative assistant; and Naomi Reyes, administrative assistant.

The Southern Illinois Builders Association is a trade association of contractors representing approximately 500 commercial and industrial building, highway and utility construction contractors throughout Southern Illinois.

Dean of nursing named at SIU

Southern Illinois University Edwardsville Provost and Vice Chancellor for Academic Affairs Denise Cobb, PhD, has named Judy Liesveld as dean of the School of Nursing after a national search.

Liesveld will assume her duties in July 2022.

Liesveld arrives on campus after serving as interim associate dean of Innova-



Liesveld

Education and Innovation at UNM.

An accomplished teacher, scholar and practitioner with clinical experience in pediatric primary care, Liesveld is a fellow of the American Academy of Nursing and serves as the Dean Ridenour/Mason New Mexico Nursing Education Consortium Endowed Fellow. Liesveld brings a wealth of experience in the design and implementation of pipeline programming aimed to functionally increase clinical and academic partnerships. She has an extensive history in securing grant funding to support her work with underserved communities and populations.

Liesveld will succeed Mark Luer, who has served as interim dean of the SON since May 2021 following the retirement of Laura Bernaix.

Former hospital head now with Optum

Patti Fischer, former president and CEO of HSHS St. Elizabeth's Hospital in O'Fallon, has been named vice



Fischer

president of Inpatient Care Transformation at Optum. Optum Inc. is an American pharmacy benefit manager and health-care provider. It has been a subsidiary of UnitedHealth Group since 2011.

Fischer has had a long career in public health. She was CEO at St. Elizabeth's from May 2018 until mid-November. The job with Optum was announced in December.

Fischer said she will be working on a new, innovative collaboration between SSM Health and Optum. The initiative, announced in October, focuses on making quality care more accessible and affordable for people across the Midwest.

"Together, the organizations will work to improve the overall well-being of individuals and communities – while addressing the complex social and economic factors affecting each person's health," an Optum release said. SSM Health and Optum will partner across certain functions – including inpatient care management, digital transformation and revenue cycle management – to improve health outcomes and patients' health care experiences. The organizations also will collaborate to redefine the consumer health care journey through the design and development of a seamless digital experience to simplify patient access to the care and services they need.

To help advance health equity, UnitedHealth Group and SSM Health will jointly invest in vital community health programs to ensure the disadvantaged and vulnerable have equal access to quality health care services. These efforts will focus on closing the health equity gap and critical health priorities in the communities SSM Health serves throughout the Midwest.

Send People in Business items to Editor Dennis Grubaugh, dgrubaugh@ibjonline.com.