

TNT ELECTRIC

Lacon, Illinois

FARM ♦ RESIDENTIAL ♦ COMMERCIAL

"NO JOB TOO SMALL"



FULLY INSURED ♦ 42 YEARS EXPERIENCE

24-HOUR EMERGENCY SERVICE

- ♦ COMPLETE REWIRE
- ♦ NEW CONSTRUCTION
- ♦ SERVICE UPGRADE
- ♦ ALL ELECTRICAL WORK
- ♦ BUCKET TRUCK

Overhead - Underground Waterline Work
Post Hole Digging ♦ Light Pole Setting

CALL TERRY TAYLOR - (815) 866-8557 FREE ESTIMATES

Specializing
In
Grain Bins



to
Your
good
health
WITH
Dr. Keith
Roach

Understanding How PSAs and DREs Help Identify CANCER

DEAR DR. ROACH: I am a 53-year-old healthy male, and I always request to check my PSA levels each year. My 57-year-old brother's new doctor denied his request for a routine PSA check on their initial visit. She said that the test now produces more false positives as well as unnecessary procedures and surgeries, so she said "no" and wouldn't order it.

Are primary care physicians discouraging the PSA test for older men now? I don't get any push back when I request to check it. Also, I heard the digital rectal exam (DRE) isn't as valid anymore for screening. His new doctor also did not do a DRE. I'm curious to know your thoughts on the current DRE and PSA screening guidelines for primary care physicians. - C.C.

ANSWER: The prostate-specific antigen (PSA) test is a screening blood test for cancer, and the recommendation for its use has gone back and forth over decades since it's been introduced. Since screen-

ing and prevention are my areas of expertise, I have followed the literature on the use of PSAs and other screening tests very closely.

In my opinion, your brother's doctor was wrong to refuse to order the test. She was right that it does produce false positives, which could potentially lead to unnecessary surgeries; however, there are good ways to reduce unnecessary treatment while still ordering the test, which can save lives.

Most prostate cancer is so slow-growing that it is likely never to bother a man until he dies from something else. So, we don't want to operate on these relatively indolent cancers because there's a possibility of a serious side effect from surgery, such as urinary incontinence or erectile dysfunction (neither of which any man wants).

Before operating, careful testing is done on the prostate cancer, including imaging (ideally by an MRI scan), a biopsy with pathological examination, and often genetic testing of the tumor. Along with the PSA results, we can separate prostate cancer into categories of very low risk and low risk versus intermediate and high risk.

Once we have the diagnosis, we can make good recommendations so that we can identify the rare high-risk cancers while not unnecessarily treating the low-risk cancers. Without screenings, we can't keep rare, small and aggressive tumors from spreading until it's too late.

Now I have to tell you that 57 isn't so much "older" than 53, at least from the perspective of prostate cancer screening. The most

important time for prostate cancer screening is ages 50-70. There are some men who benefit from starting screening at a younger age (those with a family history, Black men, and men with certain genetic risks), and there are some who benefit from starting screening when they're older than 70.

The DRE does not add much to the results of the blood test. Approximately 1% of men will get prostate cancer that is diagnosed by the DRE as part of combined screening. Many men will refuse screening if it includes a rectal exam, and it's estimated that 90% of abnormal rectal exams will be false positives. On the other hand, I've had instances where quite a few men don't feel like they have been adequately screened unless they get the DRE.

I have a discussion with every man about PSA testing, and I recommend it for most men in this age group. But I only rarely have had a man say that he doesn't want it once he understands that we won't recommend surgery unless the combination of all the studies show this is a high-risk situation.

Super Crossword

Answers
O I A I F N D I O R I T A P I R I P
H S T O R C A L O N E M A N E R R
F A I R Y T A L E E N C O D I N G J O E
U N C A S I O A K G A R D I N S
N E S T M I S S I O N T O M A R C O S
T A R O T S A L I A M E T R O
I N C O H I N I D A N G I P S I N
T E A R E D M S S I D N E Y B E A C O N
A T T I M E S K I D N E Y B E A C O N
I L L I A W A T I R G G O I S P I N E
I L P A P R E C O C I U S F E W T A M
S O L E B Y F R O N E A P W Y E
S O I M S O U I R G I N O N A M I S
O T O E G A I Q A T A R I
B B C D E A C O N G F S T U D E N T S
A F I O U N A N D I N D E A R
S C O N D M Y R E G R E T S S C A B
S H A P I R O S O C S A H A R A
S I D C O R A L I S U P P I F M N I S
A V A T E M L I A S T A M P E D O U T
X E S F E L L E R T A U N T S E R E

FOLEY MOTORS, INC.

NAPA AUTO CARE CENTER

Financing
& Towing
Available

QUALITY PRE-OWNED
CARS & TRUCKS

We Do 4-Wheel
Alignments

FULL SERVICE SHOP

ROUTE 29 - HENRY - PHONE (309) 364-4711

We Carry OEM Parts for Chrysler, Ford, GM and Foreign Vehicles

COME SEE US FOR SOME GREAT DEALS



For Sales & Service Call Jade Kempf and Jarod Foley
at (309) 364-4711

WE CARRY ALL TIRE BRANDS

Specializing in all areas of service & repair from small cars to heavy duty trucks, foreign and domestic



We Love What
We Do
And It Shows!!

Pickup and Delivery
Available To Most Areas

Best In The West
Phone (815) 257-2731



(815) 452-2500

Mobile (815) 867-0647

(Owner: Andy Metz)

Toluca ♦ Streator

All SURROUNDING AREAS

SENIOR CITIZEN DISCOUNT Rheem Dealer SENIOR CITIZEN DISCOUNT

Plumbing ♦ Heating ♦ Cooling

BRIDGETOWN EVENTS

102 North Ida St., Lacon, Illinois

- ♦ Weddings
(Indoor/Outdoor)
- ♦ Funeral Dinners
- ♦ Meetings



- ♦ Reunions
- ♦ Showers
- ♦ Parties
- ♦ Banquets

PHONE (309) 442-2020

MK FARM

DRAINAGE SPECIALISTS, LLC

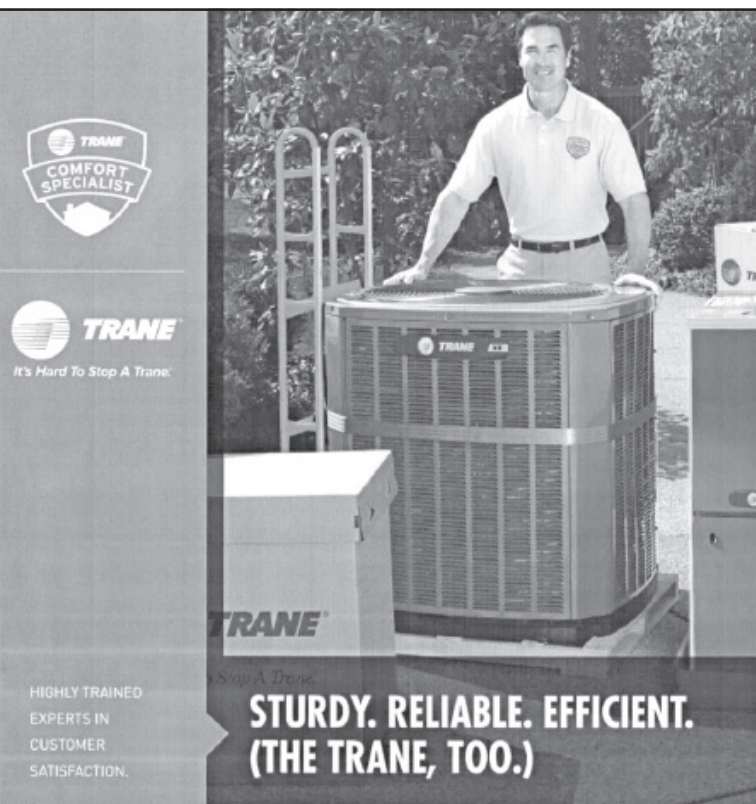
CALL HAROLD
CELL (309) 238-8625

We install any tile size in the follow counties:

Marshall, Putnam, Stark, LaSalle, Henry,
Livingston, Peoria, Bureau and Woodford

*Further depending on job size

- ♦ No Long Waiting Lists
- ♦ GPS Equipped
- ♦ Experienced
- ♦ Free Estimates
- ♦ Grid Tiling
- ♦ Trencher



SEEK COMFORT FROM THE STRONG, DEPENDABLE TYPE.

When it comes to heating and cooling homes, Trane systems are the most reliable and longest lasting in the industry. Just as reliable as Trane products are the independent Trane Comfort Specialist™ dealers who carry them. We meet stringent quality standards to ensure the energy-efficient equipment we install in your home keeps you comfortable and saves you money, year after year. For a customer experience that's as comforting as a Trane system, call us today.

Energy Specialists Co.

815-452-2332

www.energy-specialists.com

LIC. NO. 55-042706

Plumbing - Air Conditioning - Heating - Electrical - Generators

Contact us now for complete confidence
in a home comfort solution.

Copyright © 2017 Trane. All rights reserved.