

OBITUARIES

Albert Leo Davis Jr.

Albert Leo Davis, Jr., 56, of Homerville passed away Tuesday morning, February 17, 2026, at his residence after an extended illness.

Born in Homerville to Albert Leo Davis, Sr. and Verdie Mae Herrin Davis, he lived in Homerville all of his life. Mr. Davis was an equipment operator for Lee Engineering. He always enjoyed fishing, riding dirt roads, and especially going to the beach with his family.

He was preceded in death by his mother, Verdie Mae Herrin Davis; three sisters, Denise Newbern, Dottie Newbern Bagley, and Deborah Newbern; one brother, Johnny Newbern.

Survivors include his

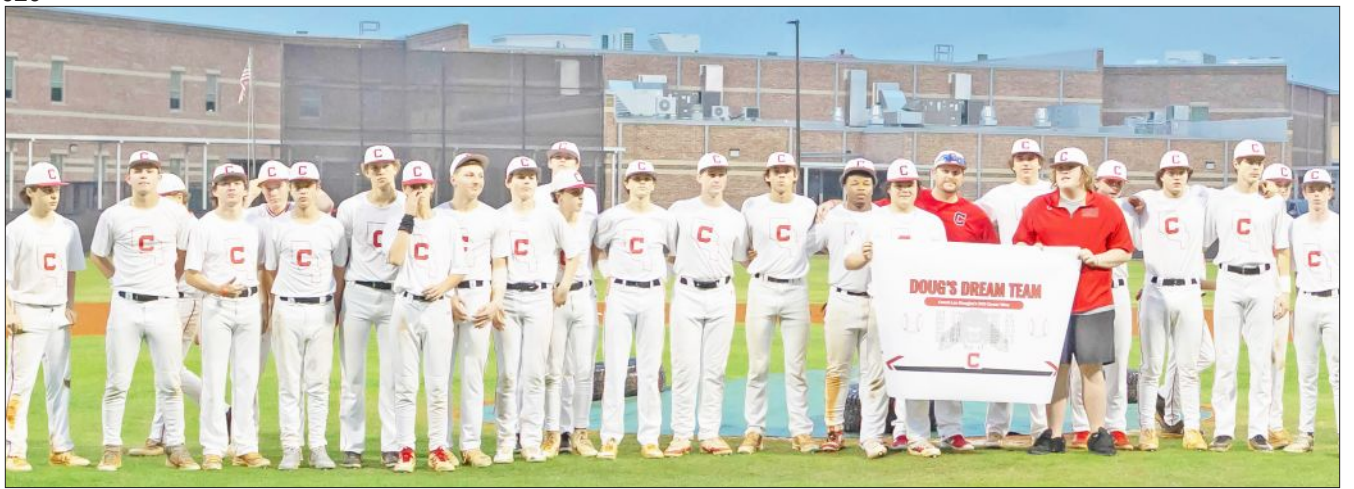
wife, Rosemary Reliford Davis of Homerville; four children, Emalee Rose Newbern, Kurt Newbern, Johnny Newbern, and Mary Sanders all of Homerville; one sister and brother-in-law, Darlene and Michael Palmer of Homerville; numerous nieces, nephews, and other relatives.

A memorial service will be held Thursday, February 26, 2026 at four o'clock at the Lighthouse Assembly of God with Rev. Donald Stalvey officiating.

The family will receive friends from 3 until 4 pm at the church.

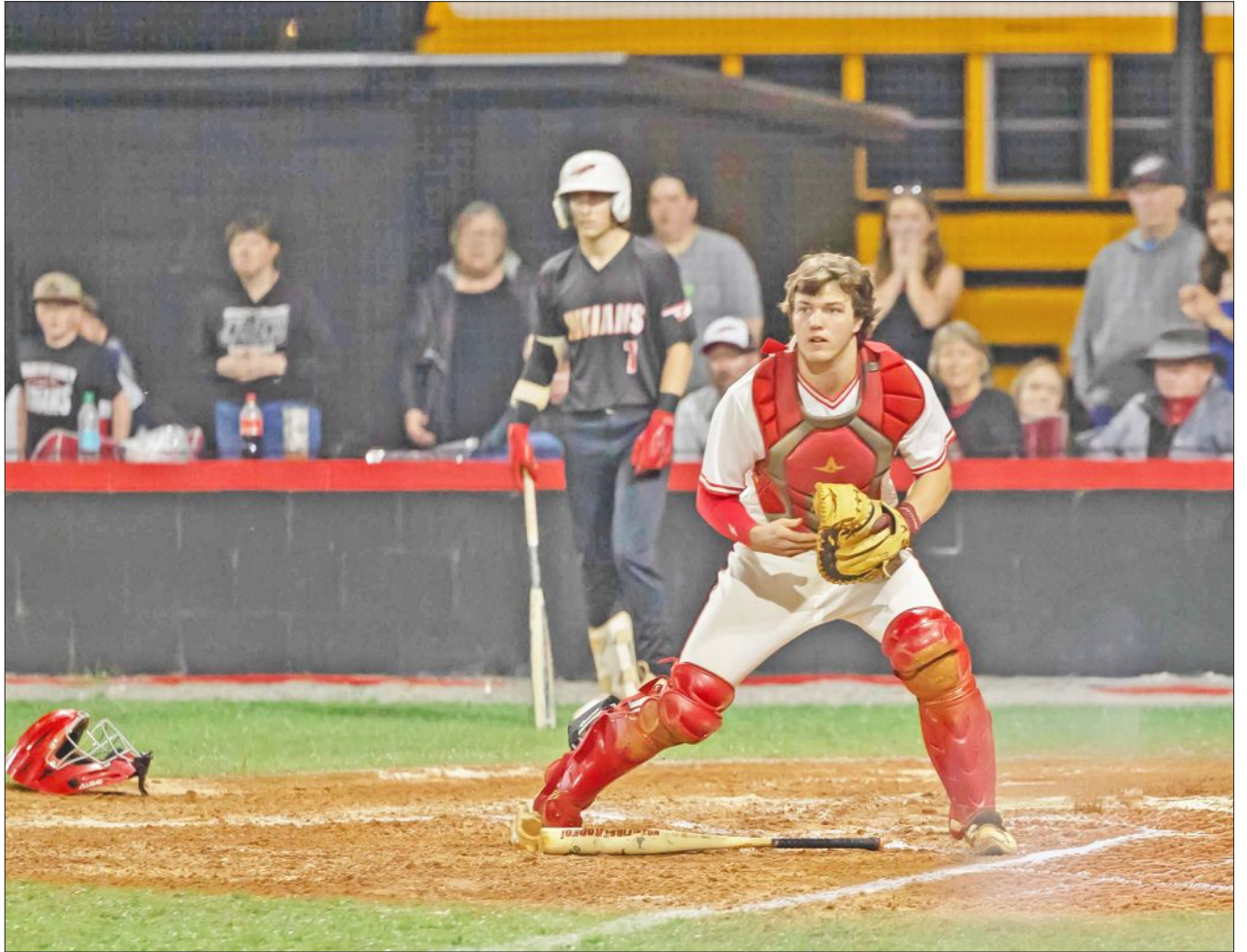
Sympathy may be expressed online at www.roundtreefuneralhome.net.

Roundtree Funeral Home is in charge of the arrangements.



Douglas' 200th win as CCHS baseball coach celebrated

Lee Douglas recently won his 200th game as Clinch County High head baseball coach. On Friday, prior to the Clinch County/Charlton County baseball game at Cecil Barber Field, Douglas was recognized for reaching the milestone (see above). The Panthers are now 4-1 on the young season. Last week, they throttled Brooks County in Quitman 14-2, then lost to Charlton County at home, 11-0. This week, they play at Echols County Tuesday, then host Irwin County Friday. Saturday, they'll play Berrien at 1 p.m. Next week, on Tuesday, they will be at Lanier County. All of those games start at 6 p.m. Pictured below is Clinch's Weston Bennett waiting for a throw to home Friday – Photos by Joy Sumner Photography.



Massage Therapy
for prevention and remedy



Services include: Deep Tissue, Hot Stone, Pregnancy and Relaxation Massages, Body Scrub and Wrap, Cupping, Paraffin Wax and FarmHouse Fresh Skincare Products!



Clinch Memorial FAMILY PRACTICE
Working for a Healthier You

Visit www.clinchfamilypractice.org for location and hours.
Call (912) 470-2273 (CARE) to make your appointment today!

This institution is an equal opportunity provider and employer.

we care about your community. because it's our community too.

simple human sense

Lutz, Brown, Peagler & Manley
INSURANCE AGENCY



28 East Dame Ave. • Homerville
912-487-5411



Auto-Owners
INSURANCE
LIFE • HOME • CAR • BUSINESS

ONLINE ONLY AUCTION

The Estate of Jane A. Helms
Historic Home in Homerville, GA

961 FARGO HWY - Known Locally as the "Helmstead Bed & Breakfast", This 5 Bedroom 5 Bath Georgian-Style Brick Home has 3,288 sq ft of Living Area. It was Built with Quality Materials that You Would Have to Custom Order Today Such As:

- Wide Plank Pecky Cypress Paneling
- Wide Plank Heart Pine Hardwood Floors
- Wide Plank Heart Pine Paneling
- Large Window Interior Bi-Fold Shutters

Other Amenities Include: Marble Foyer Floor, Honduran Mahogany Staircase, Parquet Flooring, Dentil Crown Molding, Pocket Doors, Crystal Chandelier, Leaded Glass Bay Window, 3 Brick Fireplaces, 2.6 Acre Lot, Two Central Heat & Air Units, New Roof and Septic System.

REPLACEMENT VALUE TODAY WOULD EASILY BE \$450,000 TO \$500,000. THE ESTATE HAS MADE A LARGE REDUCTION IN THE RESERVE PRICE & NEEDS TO SELL THE PROPERTY AT THE CONCLUSION OF THIS AUCTION! THEY ARE LOOKING FOR THE BEST POSSIBLE OFFER TO ACCEPT! DON'T MISS THIS RARE OPPORTUNITY TO BUY A GRAND HOME AT A PRICE YOU'LL GLADLY PAY!

LIVE NOW FOR BIDDING!
BIDDING ENDS MARCH 5 STARTING AT 2PM

You May Inspect Anytime By Appointment

For Detailed Info. & Aerial Video Go To
bid.professionalauctioneer.com
229-242-5412

PROFESSIONAL AUCTIONEERS, INC.
Valdosta, Georgia - GAL # C1409, FAL # AB290
10% Buyer's Premium

STARs

(Continued from Page 1)

Lions Club, which sponsors the STAR program in Clinch County. The students, teachers and their families were recognized at a Lions Club banquet Thursday at the First Baptist Church social hall.

CCHS Principal Jerrilynn Spivey introduced the STAR Students, who then spoke about why they chose their STAR Teachers. Goodman said Stalvey taught him in three classes (Civics and History) and also was a club sponsor.

"She's been a big part of my high school career and is just a great teacher," Goodman said.

Goodman, the son of Russ and Carra Goodman, is attending the University of Georgia after graduation from CCHS.

Tomberlin taught George in 7th and 9th grade Mathematics.

"She was a joy to have in class," Tomlinson said of George, the daughter of Terrence and Tia George. "She's the embodiment of what every student should be. She's a diligent student who loves to learn. I'm honored and privileged to be selected as her STAR Teacher."

George said she will be attending either Georgia College & State University or Mercer University next fall.

The Clinch County Lions Club has been the sponsor of the high school's STAR program for over 50 years. At the meeting, the Lions also approved paying for eyewear for a student. The annual Lions Club golf tournament, the John E. Hughes Memorial Tournament, is set for Friday, May 8, at Okefenokee Country Club.

RMC
Paint Contracting LLC
Paint and Pressure Washing
Residential and Light Commercial
Major Credit Cards Accepted
229-415-5809

Metal FX Manufacturing, Inc.
Galvanized Steel Frames
Roofing • Steel Buildings • Shelters
Professional Installation or Do It Yourself



Hwy 129 5 Miles North Of Alapaha
229-468-3146 www.metalfx.net

Roundtree
Funeral Home

"Service with Dignity and Honor"
Since 1982

240 Dame Ave. • Homerville, GA 31634
Call: (912) 487-5325 or Fax: (912) 487-2050
www.roundtreefuneralhome.net

Community Paramedicine



Quality Care at HOME

Healthcare should be personal—and close to home. That's why we offer Community Paramedicine, led by Lee Lane, a trusted local paramedic with 15+ years of experience in Clinch County. From in-home assessments to prescription delivery and transportation support, we're here to help you manage chronic conditions or recover from an ER visit with compassion and care. Call 912-520-2013 to refer yourself or someone you love.

