

Sports

Covering Kickoff to the Final Out in Clinch County Athletics



Clinch's Rayce Godfrey slides into second base during action at Cecil Barber Field against Echols County Tuesday— Photo by Joy Sumner Photography.

Diamond Panthers sweep week's slate of games

By Len Robbins
Publisher

The Clinch County Panther baseball team swept their slate of games last week, improving to 11-4 on the season.

Tuesday, Lee Douglas' Panthers topped Echols County at home in region play, 11-7. Wednesday, they stomped Wheeler County 14-0 on the road. Friday, Clinch beat Irwin County in Ocilla, 10-7.

At Cecil Barber Field Tuesday, the Panthers went back and forth with the Wildcats, as the visitors led 4-2 after two innings, then Clinch had a five-run third to take a 7-5 lead. After four innings, Clinch led 10-6. Each team added another run in the sixth for the final.

Clinch had 13 hits for the day, including two from Jake King (double), Tate Denmark, Dane Brown (double), and Weston Bennett. Others with hits included Sage Delk (triple), Braden Herlocker (double), Remington Wheeler, Rayce Godfrey and Joshua Delk.

Joshua Delk started on the hill, and went 2 1/3 innings, striking out four. He was relieved by Hunter Henderson, then Jake King for the final 3 2/3 innings. King only gave up one hit and struck out two.

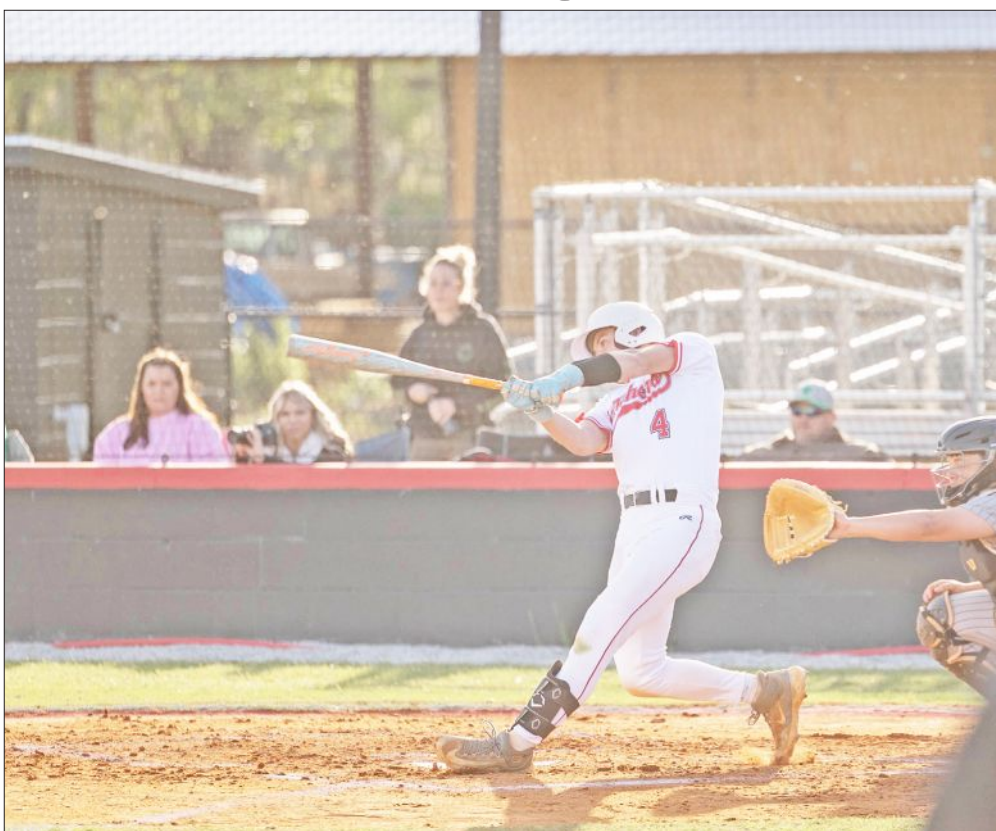
It was all Panthers at Wheeler County Wednesday for a non-region match. Clinch had six runs in the first inning, then eight more in the second, giving up just one hit for the game in five innings.

At the plate, the Panthers had six hits and were walked 10 times. Rayce Godfrey went 2-for-4, while Weston Bennett had a double. Other hits came from Denmark, Wheeler and Herlocker.

Bennett started as pitcher, allowing one hit and striking out five over two innings. He was relieved by Wheeler then Henderson — neither two gave up a hit.

The Panthers secured the region road win at Irwin County Friday with a three-run 7th inning.

Clinch led early, up 6-2 after three innings. But the Indians clawed back with a three-run fifth inning to cut the Panther lead to one. Going into the seventh, Clinch led

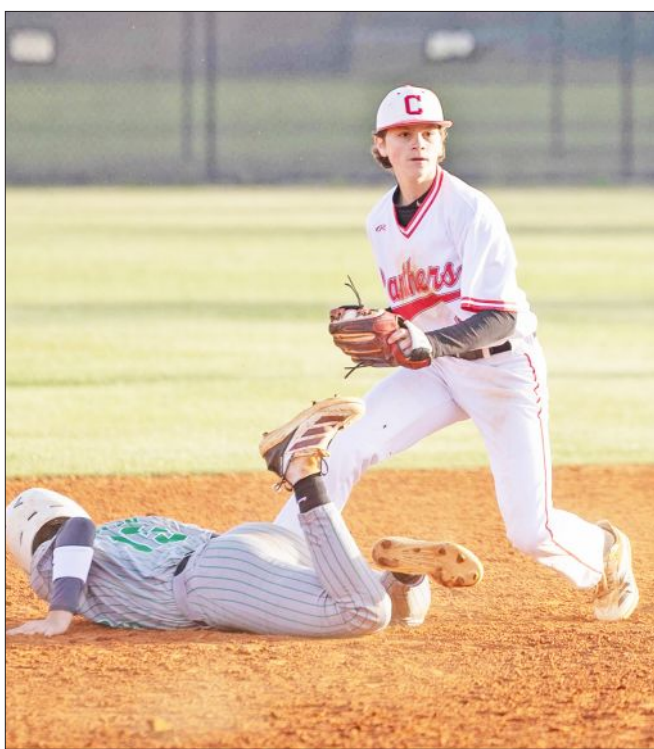


Clinch's Tate Denmark hits the ball during Tuesday's game against Echols County — Photo by Joy Sumner Photography.

7-6.

The top of the order was strong for the Panthers Friday, as King, Delk, Denmark and Brown all had two hits apiece (Brown and King doubles). On the hill, Denmark pitched four innings, striking out four and allowing five hits. King finished the last two innings, allowing two hits and no earned runs.

This week, it's more region action, as Clinch hosts defending state champion Lanier County Tuesday, then host Turner County Thursday and Atkinson County Friday. All those are set for 6 p.m. starts. On Tuesday, March 31, Clinch will visit Brooks County (5:30 p.m.) for another region tilt.



Clinch's Jake King makes a tag at second during action from the Echols County game Tuesday — Photo by Joy Sumner Photography.



Clinch's Hunter Henderson pitches against Echols County Tuesday at Cecil Barber Field — Photo by Joy Sumner Photography.

This page is brought to our readers by the following sponsors. Be sure to thank them for their support of sports and recreation in Clinch County.

we support your team.
because well, it's our team too.
simple human sense



Lutz, Brown, Peagler & Manley
INSURANCE AGENCY
28 E. Dame Avenue • Homerville
Call us at 912-487-5411

Auto-Owners
INSURANCE

Go Panthers!
Proud Supporters of Clinch County High



LEECONTAINER

Our Containers. Your Success.



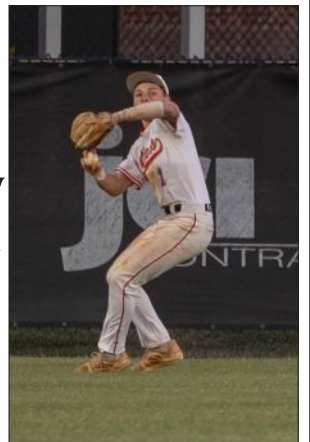
We offer personal training and tanning
Call Larry at (912) 387-9092

The Subway Spring Sports Player of the Week is

baseball's Sage Delk. Against Echols County Tuesday, Sage had a triple. And against Irwin County Friday, he had

two hits.

Congrats Sage, from your friends at



23 West Dame Avenue in Homerville
912-487-3894

CLINCH MEMORIAL HOSPITAL PHARMACY
PLAYER OF THE WEEK

The Clinch Memorial Hospital Pharmacy Baseball Player of the Week is Rayce Godfrey. Against Wheeler County Wednesday, Rayce went 2-for-4 at the plate with 2 RBIs.



Rayce Godfrey



Clinch Memorial Hospital
PHARMACY

Curbside Pickup

Quick Refills

Call 912-470-2359

Congratulations!