

# Sports

Covering Kickoff to the Final Out in Clinch County Athletics



Clinch County's Braxton Railey slides safely into third base during action at Taylor County last week – Photo by Joy Sumner Photography.

## Panthers topped by Taylor in playoffs

By Len Robbins  
Publisher

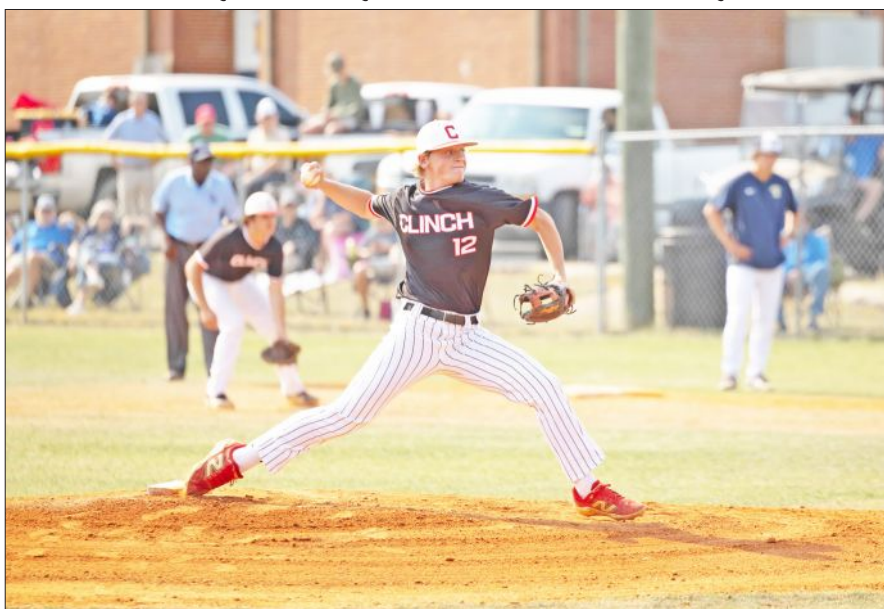
The Clinch County High baseball team ended their 2026 season with a tough loss in a best-of-three series at Taylor County.

In the deciding third game Thursday, the Vikings pounded out five runs in the sixth inning to take the lead away from the Panthers, and held on for the 7-5 win. The first-round playoff loss ends the Panthers' season at 21-10.

Lee Douglas' Panthers took the first game of the series, 3-1, then lost in the second game Wednesday, 14-6, setting up the rubber match Thursday at Taylor County.

In that first game Wednesday, Remington Wheeler went the distance for Clinch, scattering six hits over seven innings, striking out two and allowing just one earned run.

At the plate, the Panthers got a two-run homer from Tate Denmark, doubles from Weston Bennett and Jake King, and singles from Sage Delk and Landyn Pittman. They scored two runs in the first after Taylor



Clinch County's Remington Wheeler pitches during the first game Wednesday at Taylor County – Photo by Joy Sumner Photography.

scored their lone run in the first. Leading 2-1, Wheeler kept the Vikings at bay while the Panthers got an insurance run in the top of the seventh.

The Viking bats woke up in Game Two Wednesday. They opened with a three-run first, then added two in the third to take a 5-0 lead. Clinch battled back, scoring five in the fifth. But the hosts had a three-run fifth, a lone run in the sixth, and five more in the

seventh, as their catcher hit two homers and had 5 RBIs.

Offensively, Clinch game up 10 hits and had nine. Dane Brown went 2-for-3 for Clinch, while Denmark went 2-for-4. King, Sage Delk, Rayce Godfrey, Wheeler and Pittman also had hits in the game.

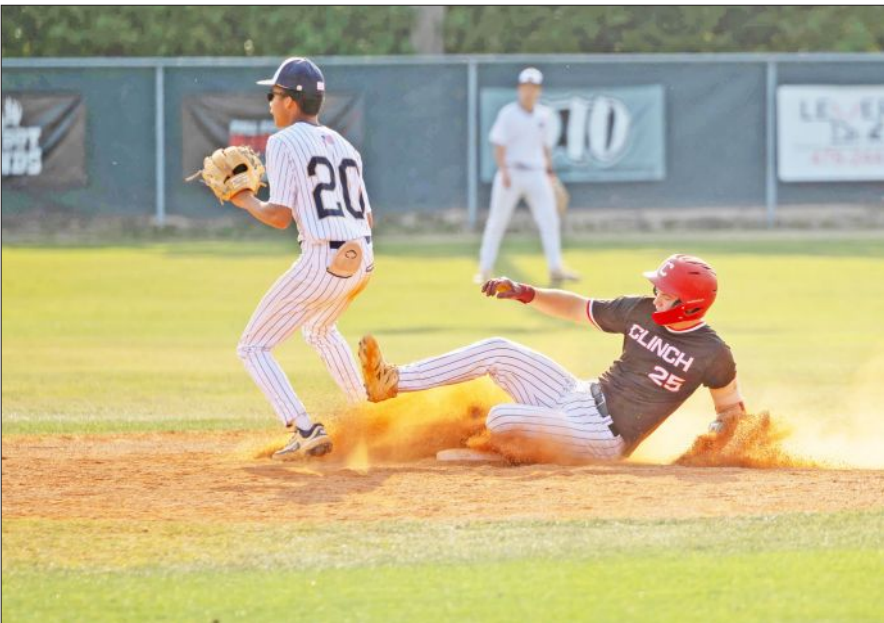
Joshua Delk started on the mound for Clinch, followed by Hunter Henderson, Bennett and King.

In the deciding game Thursday, Clinch took an early lead, up 5-0 after two innings. In the fifth, the Vikings finally got on the scoreboard, scoring two. Then, they exploded in the bottom of the sixth with five runs to take a 7-5 lead into the final inning.

Clinch had eight hits to Taylor's seven for the game. Denmark started on the hill, going four innings. He was relieved by Brown, then King.

At the plate, Sage Delk and Godfrey each had two hits, while Brown, Denmark Wheeler and Joshua Delk also had hits.

The Panthers were the third seed from Region 2-A, while Taylor County (22-10) were Region 6-A's second seed. They will play ECI in the playoffs' second round.



Clinch County's Weston Bennett slides into second base vs. Taylor County – Photo by Joy Sumner Photography.



## Lady Panther netters move on to second round

The Clinch County High Lady Panther tennis team won their first-round playoff match at Taylor County last week. Clinch was the third seed from Region 2-A, and Taylor County was the second seed. This week, the Lady Panther netters will play at Screven County (Region 3-A's top seed) in the state playoffs' second round. – Photo by Joy Sumner Photography.

This page is brought to our readers by the following sponsors. Be sure to thank them for their support of sports and recreation in Clinch County.

we support your team.  
because well, it's our team too.

simple human sense



Lutz, Brown, Peagler & Manley  
INSURANCE AGENCY  
28 E. Dame Avenue • Homerville  
Call us at 912-487-5411

Auto-Owners  
INSURANCE

## Go Panthers!

Proud Supporters of Clinch County High



LEECONTAINER

Our Containers. Your Success.

## CLINCH FITNESS



CENTER

We offer personal training and tanning

Call Larry at (912) 387-9092



The Subway Spring Sports Players of the Week are the Clinch County girls tennis players. They won their first-round playoff match against Taylor County. They will play at Screven County this week in second round of playoffs

Congrats to the Lady Panther netters,  
from your friends at



23 West Dame Avenue in Homerville  
912-487-3894

## CLINCH MEMORIAL HOSPITAL PHARMACY PLAYER OF THE WEEK

The Clinch Memorial Hospital Pharmacy Baseball Player of the Week is Tate Denmark. In Game 1 vs. Taylor, Tate had a two-run homer in the 3-1 win.



Tate Denmark



Clinch Memorial Hospital  
PHARMACY

Curbside Pickup  
Quick Refills

Call 912-470-2359

Congratulations!