

Lady Dragons are now 5-8

DALE CURRY
STAFF WRITER

Green County's softball team had a rough week last week, losing four games in a row before beating Fern Creek Saturday morning in Elizabethtown.

The Lady Dragons lost district games to Hart County and LaRue County to make them 1-2 in the district race.

As a team, Green County hit just .256 during the week's games

Hart County 12 Green County 2

The week started off rough at Munfordville when the Lady Dragons were run-ruled by Hart County in five innings. Prior to this game, in the last 17 contests with the Lady Raiders, Green County had only lost once.

Hart County scored seven runs in the first inning and then added runs in every inning after that while Green County only scored their runs in the fourth inning.

Brooklyn Jewell's double was the only extra-base hit for the Lady Dragons.

LaRue County 7 Green County 2

Last year, the Lady Dragons lost both regular season games to LaRue County but came back to beat them in the championship of the 18th District Tournament.

After two innings, the game was tied at two. Brooklyn Jewell scored the first run on an RBI single by Hazel Sharpe. In the second inning, MacKenzie Johnson scored from third on an error by the Lady Hawks catcher.

After that, it was all Hart County as the Lady Dragons did not score again in the game.

Cumberland County 11 Green County 7

This was the second meeting between the two schools this season. The Lady Dragons had already lost to Cumberland County at home earlier in the season.

The Lady Dragons had two big innings in this game, in the fourth and seventh but it was not enough to overtake Cumberland County.

After the Lady Panthers jumped out to a 3-0 lead in the first inning, Green County gained the lead in the top of the fourth inning. Johnson scored the first run on an RBI single to center field by Kaylee Sharpe. Brooklyn Jew-

ell added a run when Carrington Jewell singled to right field. Kaylee Sharpe scored when Hazel Sharpe singled to center field. Emma Eastes, a courtesy runner for Hazel Sharpe, scored on Hayden Garrett's ground ball to third.

In the seventh inning, with the bases loaded and just one out, Carrington Jewell scored on a wild pitch. Garrett doubled to left field, scoring Hazel Sharpe and Ava Hickerson, and pulling the Lady Dragons within four, which became the final score.

Pulaski County 11 Green County 1

The Lady Dragons returned home Friday night to tangle with the Pulaski County Maroons but Green County lost their fifth straight game.

Pulaski did most of their damage in the fifth inning when they scored seven runs and extended their lead to ten which was enough to win the game in five innings.

The Lady Dragons' only run came in the bottom of the third inning when Kaylee Sharpe walked with the bases loaded to score Johnson.

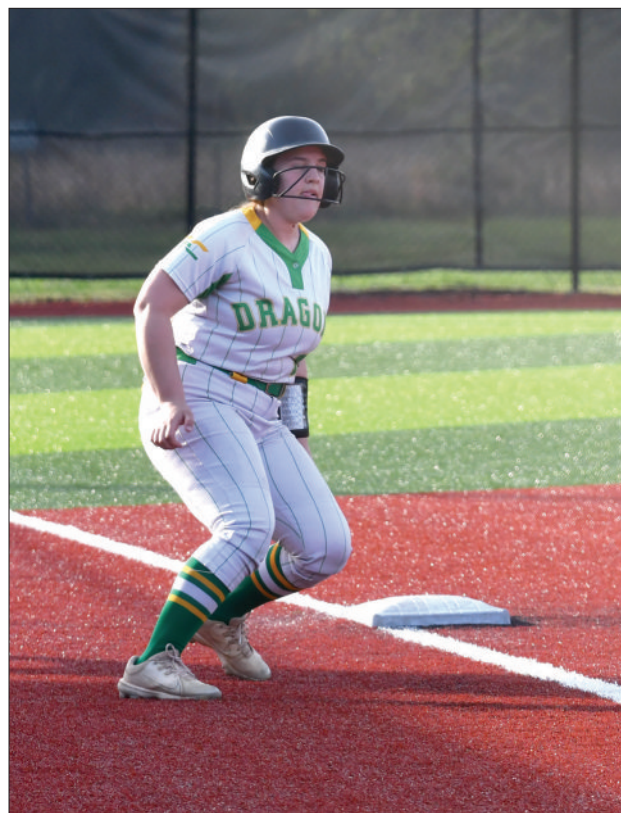
Green County 10 Fern Creek 8

This game turned out to be Green County's first extra-inning game of the season. After four and a half innings, the Lady Dragons led seven to one but Fern Creek scored two runs in the bottom of the fifth and five more in the top of the sixth to tie the score at eight and send the game to the eighth inning where Green County scored two runs and held on to defeat Fern Creek.

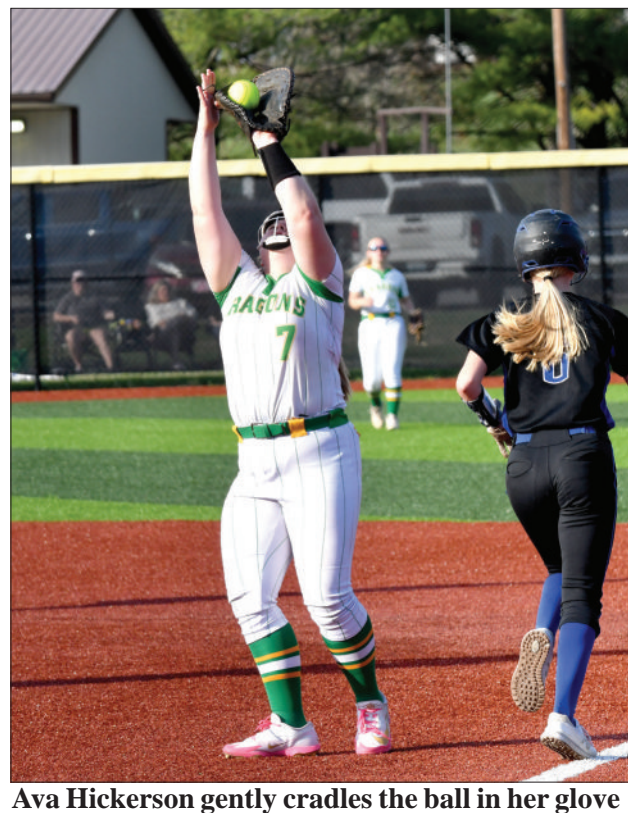
The Tigers loaded the bases in the bottom of the eighth inning with two outs and Hazel Sharpe struck out the last batter to win the game in the Panther Classic at Elizabethtown High School.

Last week's hitting stats:

- Brooklyn Jewell—8 of 16
- Hazel Sharpe—8 of 17
- Kaylee Sharpe—5 of 15
- Johnson—4 of 15
- Garrett—3 of 13
- Kimber Morgan—1 of 5
- Carrington Jewell—2 of 15
- Hayli Milby—2 of 16
- Hickerson—1 of 10
- Kylee Hargan—0 of 11
- Extra base hits last



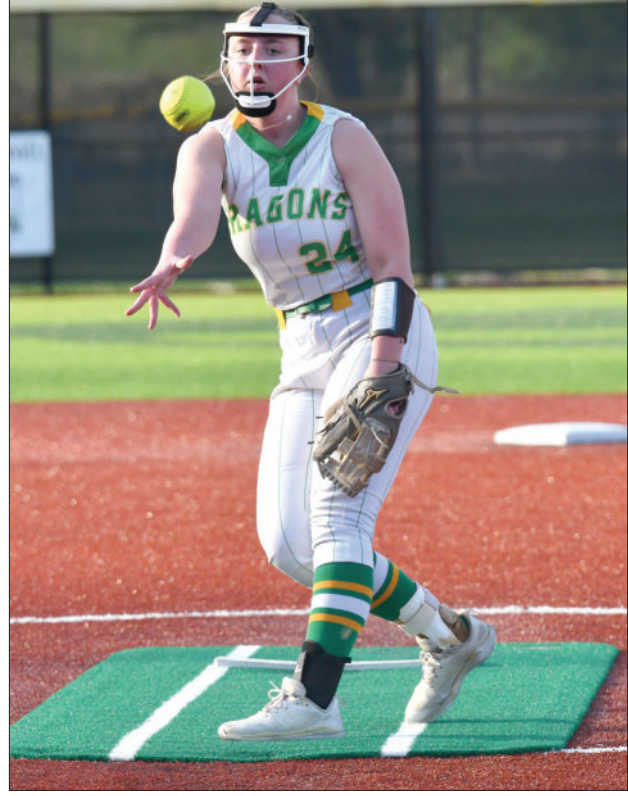
Kenzie Johnson rounds third base during a play against LaRue County. She later scored in the game for the Lady Dragons.



Ava Hickerson gently cradles the ball in her glove for the pop out at first base in the Lady Dragons' game with LaRue County.



Brooklyn Jewell was two for four at the plate against LaRue County last week. She scored one run in the Lady Dragons' 7-2 loss to the Lady Hawks.



Hazel Sharpe pitched a complete game against Pulaski County Friday night but the Lady Dragons came out on the short end of the stick, 11-1, in five innings.

Photos by Dale Curry

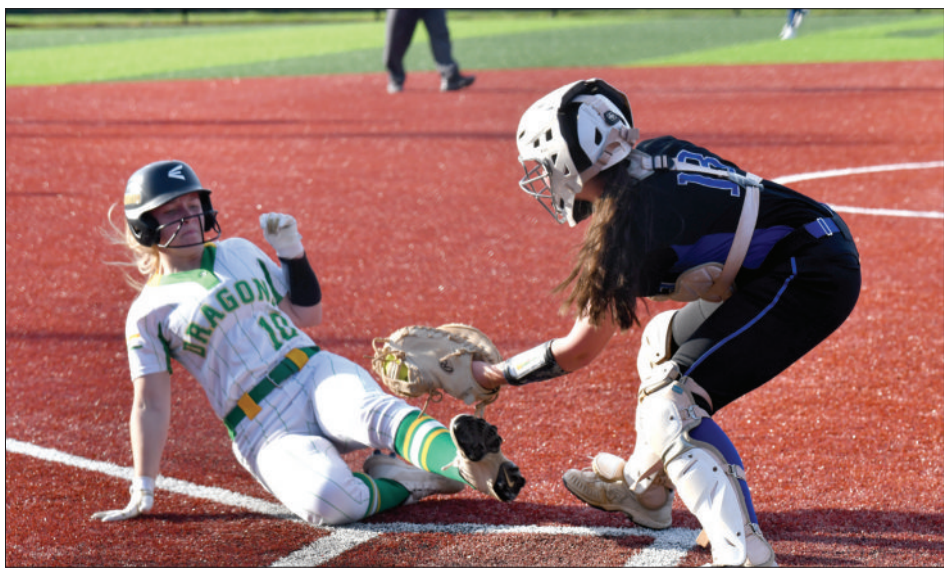
week:

Doubles—Garrett, Johnson, Hazel Sharpe

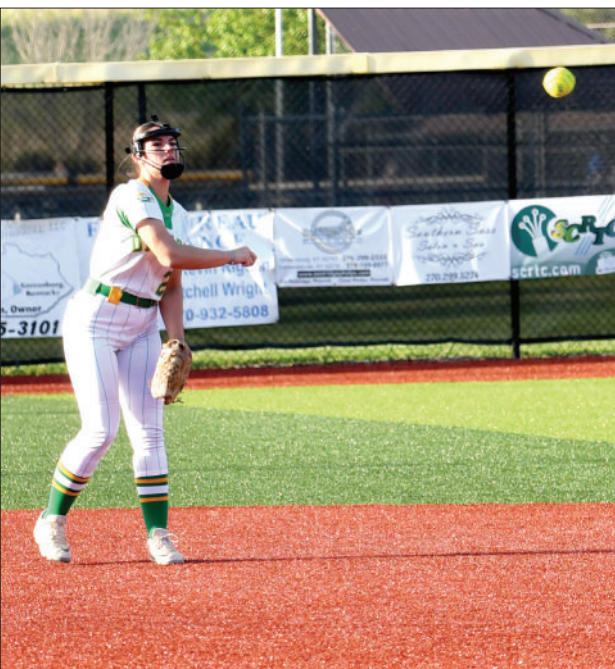
Last week's pitching stats:

Hazel Sharpe—30 innings, 49 hits, 49 runs, 24 walks, 12 strikeouts.

The Lady Dragons play at home tomorrow and Friday. Tomorrow, they are scheduled to play Edmonson County in a doubleheader beginning at 1:00 p.m. Friday, they take on Meade County in a game beginning at 5:00 p.m.



Hayli Milby almost slides in under the tag from the LaRue County catcher in a close play at home plate.



Carrington Jewell throws out the Pulaski County batter at first base during the first inning against the Maroons Friday night.

ATTENTION CLASS OF 2026

GRADUATE

Honor your special grads by placing an ad in our **GRADUATION SECTION** to be published soon. Each GCHS senior will receive this special keepsake section.

Each ad will include their senior photo, their parents, their GCHS activities, honors, future plans, favorite movie, and favorite song.

Call 270-932-4381, stop by or email advertising@record-herald.com to place your ad.

Greensburg
Record-Herald

P.O. Box 130, Greensburg, KY 42743
Call 270-932-4381 - www.record-herald.com

All ads will be in FULL COLOR