

## Softball: Lady Dragons wins 1, lose 2 last week

DALE CURRY  
STAFF WRITER

The Lady Dragons had a tough week last week, beating Edmonson County but then losing to Edmonson in the second game of the doubleheader, followed by a shutout loss to Meade County. All three games were at American Legion Park. The Lady Dragons are now 6-10 overall and 1-2 in the district race.

### Green County 7 Edmonson County 6

The highlight of this game was a grand slam homerun by senior Ava Hickerson. In the bottom of the first inning, Carrington Jewell reached base on a fielder's choice when Brooklyn Jewell was thrown out advancing to second base. MacKenzie Johnson singled to left field. This was followed by a walk to Hazel Sharpe, and the bases were loaded with just one out. Kylee Hargan hit a ground ball to third base and Carrington Jewell was thrown out trying to score but Hargan reached first base safely to lead the bases again. That set up Hickerson's grand slam to take an early 4-0 lead over Edmonson County.

Edmonson County scored two runs in the third inning and added another in the top of the fifth to cut the lead to just one run.

In the bottom of the fifth, Green County scored two more runs. Brooklyn Jewell began the inning with a single to left field. She

moved to second on a wild pitch and when Johnson singled to second base, Jewell moved to third. Hazel Sharpe doubled to left field and both base runners scored.

In the bottom of the sixth inning, Milby began the inning with a single and Davis singled to center field which allowed Milby to move to third. Brooklyn Jewell hit a sacrifice fly to left field and Milby tagged and scored to give Green County a 7-3 lead.

With two outs in the top of the seventh, Edmonson County rallied to score three runs and with the tying run on base, Izzy Davis, who pitched the whole game for Green County, struck out the last Edmonson County batter to secure the win, 7-6.

### Edmonson County 11 Green County 1

The Lady Dragon offense struggled in this game of the doubleheader while Edmonson County had already

built an 8-0 lead before Green County scored in the bottom of the fourth inning.

Hickerson walked to begin the inning and Hayden Garrett's single moved her to second base. A single by Milby to third base and her error allowed Hickerson to score but Edmonson County added two runs in the fifth and one in the sixth to run rule the Lady Dragons 11-1.

### Meade County 12 Green County 0

Despite getting no hits in the game, the Lady Dragons had three runners on base in this shutout win for Meade County.

Johnson was hit by a pitch in the fourth inning and Hazel Sharpe got on by an error but that ended with no score.

In the bottom of the sixth inning, Brooklyn Jewell got on base by an error and then reached second on the same error.

Meade County scored two runs in the third and fourth innings, added another

one in the fifth and then exploded for seven runs in the sixth inning to run-rule the Lady Dragons in the second consecutive game.

Hitting stats for last week's games:

Hazel Sharpe—3 of 7, Milby—3 of 8, Johnson—2 of 8, Hickerson—1 of 4, Marley Davis—1 of 5, Garrett—1 of 8, Hargan—1 of 8, Brooklyn Jewell—1 of 9, Jaidyn Darnell—0 of 1, Carrington Jewell—0 of 4, Kaylee Sharpe—0 of 5.

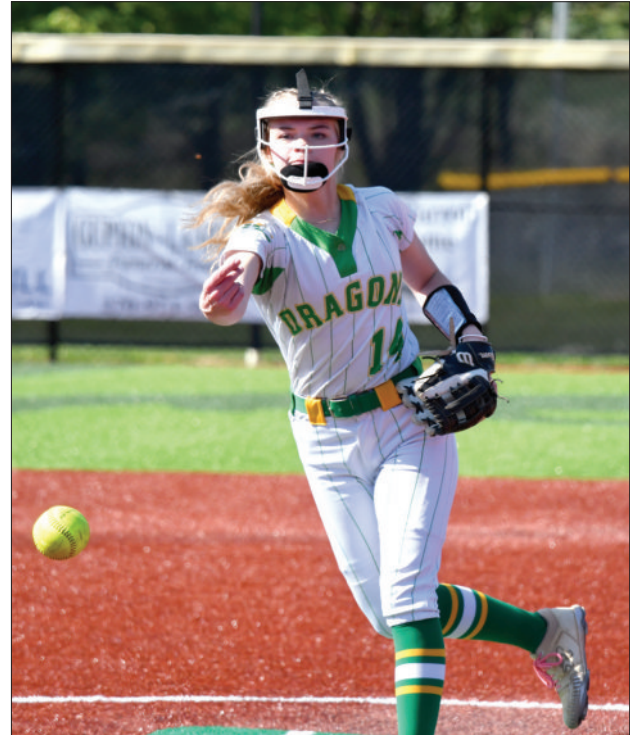
Pitching stats for last week:

Izzy Davis—7 innings, 7 hits, 6 runs, 4 walks, 5 strikeouts

Kaylee Sharpe—6 innings, 7 hits, 11 runs, 1 walk, 3 strikeouts

Hazel Sharpe—6 innings, 16 hits, 12 runs, 3 strikeouts

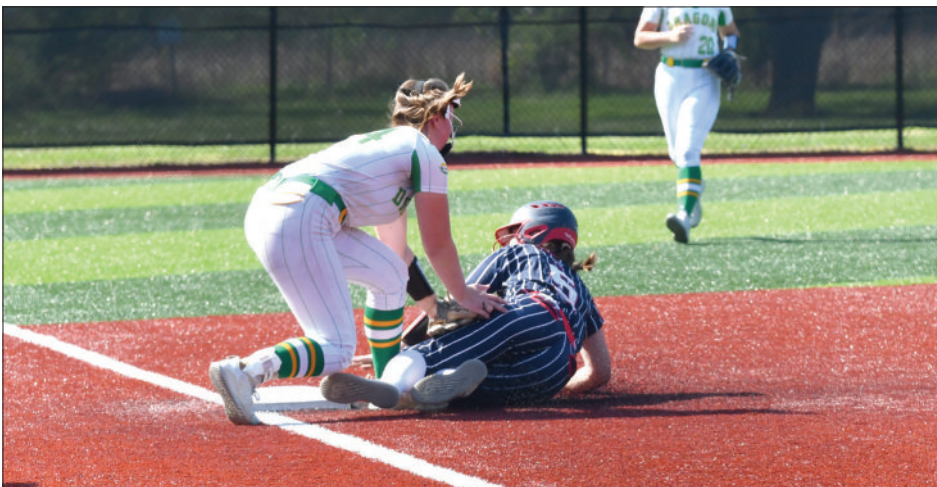
Green County has two more home games this week. Tomorrow night they host Barren County and Friday night they will take on Marion County. Then next week on Monday night, they play Elizabethtown at home.



Kaylee Sharpe pitched all six innings for the Lady Dragons in the second game of the doubleheader against Edmonson County Thursday afternoon.



Ava Hickerson steps on home plate in the game against Edmonson County last Thursday. She hit a grand slam homerun in the first inning of the first game of the doubleheader to put the Lady Dragons up 4-0. The Lady Dragons went on to win the first game 7-6.



The Lady Dragons complete a double play with this tag at third against Edmonson County. Third baseman McKenzie Johnson had thrown out the batter at first base and then the baserunner who had been on first, tried to advance to third but was tagged out by Hazel Sharpe who was covering third.



Hayden Garrett was one for three at the plate in the last game of the double header against Edmonson County last week.



Hayli Milby picked up two of the Lady Dragons' four hits in the second game of the doubleheader against Edmonson County.



Kylee Hargan settles under the fly ball to center field for an out in the game against Edmonson County.

Photos by Dale Curry

Ready? Get Set.



and support the Lady Dragons and the Dragons

SPORTS SCHEDULE

APRIL 15-APRIL 22

- Thurs., April 16 .....Baseball vs. Hart County @ home 5:00 p.m.
- Fri., April 17 .....Track meet @ Campbellsville Invitational 4:45 p.m.
- Softball vs. Marion County @ home 5:00 p.m.
- Baseball @ North Hardin 5:30 p.m.
- Tennis match @ Central Hardin Time: TBA.
- Sat., April 18 .....Fishing @ Green River Lake Time TBA
- Mon., April 20.....Baseball vs Washington County @ home 5:00 p.m.
- Softball vs. Elizabethtown @ home 5:30 p.m.
- Tues., April 21.....Baseball vs. LaRue County @ home 5:00 p.m.
- April 20-24 ..... Heartland Conference Tennis Match Away Times Vary

Green River Trails



Formerly Green Hill Rehabilitation and Care

Changing the world, one heart at a time.

213 Industrial Drive - Greensburg, KY 42743

Phone (270) 932-4241

MEDICARE & MEDICAID CERTIFIED