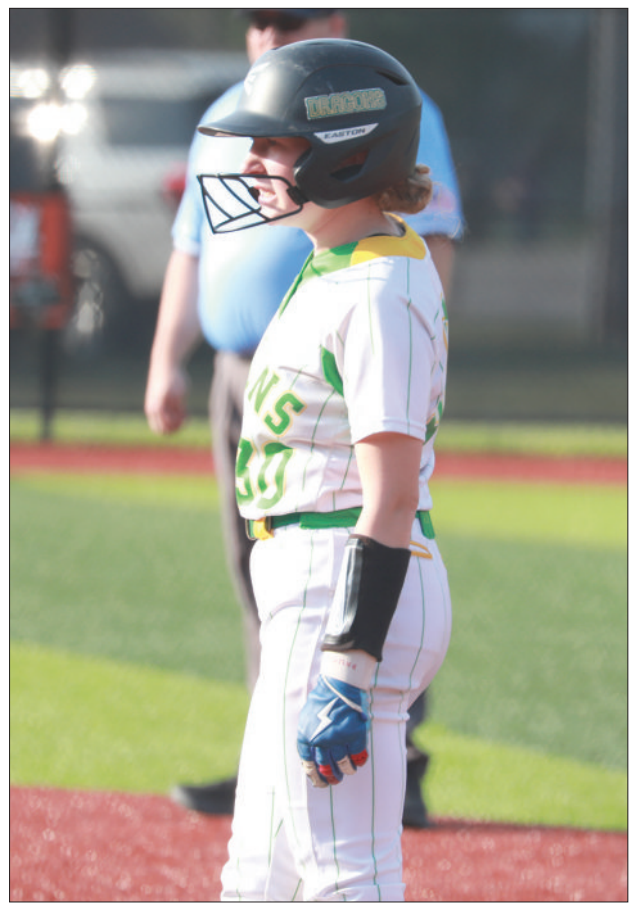




Hayli Milby makes a running catch for the Dragons in center field against Taylor County last week.



Left-hander Ava Kate Sprawls fired from the circle Friday night as the Lady Dragons faced off with the Nelson County Lady Cards



Brooklyn Jewell kept a sharp eye at the plate Friday night, earning a walk before swiping second base for the Lady Dragons.

The Region Streak Continues!

Lady Dragons win over Hart in first round of District

DALE CURRY
STAFF WRITER

While the Lady Dragons finished the regular season with a disappointing 8-24 record, they put all that behind them when the 18th District Tournament started Monday night. They defeated Hart County 4-3 in the first round to advance to the championship game last night against LaRue County. Hart County had beaten the Lady Dragons in both regular season games this year. The win over Hart County also ensured that they will play in next week's region tournament, something they have done every year since at least 1998. While some of the records are hard to find, the Lady Dragons have either won or finished runner-up in the district tournament every year for at least the last 28 years. That is an amazing streak for the team!

one in the third and fifth innings before Green County finally got on the board in the seventh inning.

With two outs, Kylee Hargan doubled to right field to score their only two runs. That hit scored Hickerson who had singled to start the inning, and Hayli Milby, who had reached base on an Adair County error.

On Thursday night, Green County hosted Taylor County. Green County took an early 2-0 lead over the Lady Cardinals when Hickerson hit a two-run homer over the center field fence. Mackenzie Johnson had doubled just before Hickerson came to bat.

The Lady Cardinals scored two in their half of the second inning and the score remained 2-2 until the top of the seventh inning. Taylor County scored two in the seventh and when Green County couldn't score, the Lady Cardinals won 4-2.

After the first inning, Green County only had one more base runner for the rest of the game. Darnell walked in the bottom of the fifth but could not advance.

Friday night, the Lady Dragons hosted Nelson County, the number one rated team in the region.

The Lady Cardinals scored two runs in the first and added another in the second but then were shut out for the rest of the game. That was all the scoring in the game as Green County lost 3-0.

While the Lady Dragons didn't score, they did have base runners in each of the first five innings but just couldn't put hits together to score a run.

Last week's batting stats: Hargan—3 of 10, Hickerson—3 of 10, Hayden Garrett—2 of 9, Darnell—1 of 9, Brooklyn Jewell—1 of 9, Johnson—1 of 11, Hazel Sharpe—1 of 11, Kimber Mor-



Ava Hickerson's teammates wait for her at home plate after she smashed a home run over the center field fence against Taylor County. That was Hickerson's third homer of the season.



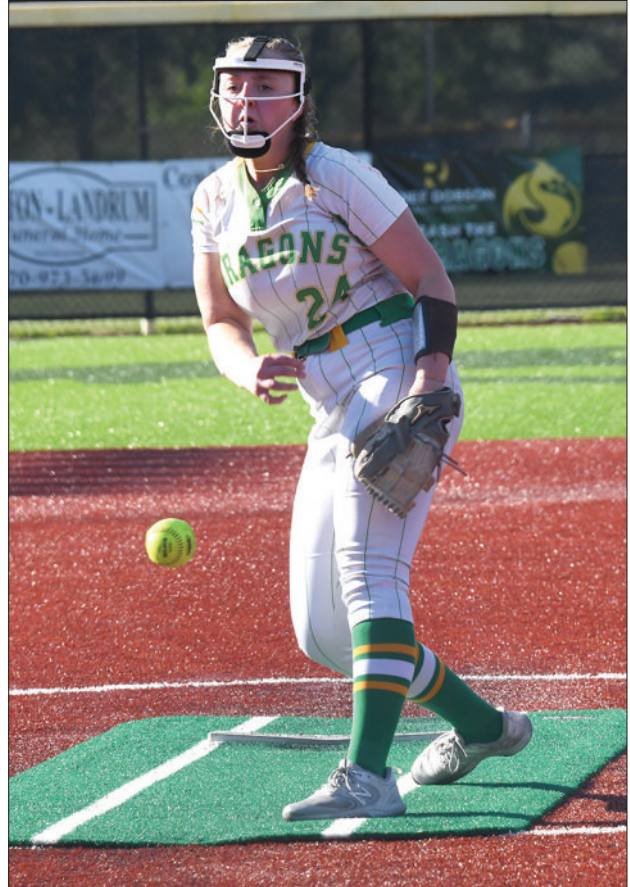
Catcher Hayden Garrett anchored the defense behind the plate Friday night as the Lady Dragons battled the Nelson County Lady Cards.



Kylee Hargan celebrates with excitement toward the dugout after ripping a ground ball just inside the first-base line for the Lady Dragons.



Mackenzie Johnson lines a double against Taylor County last week. She later scored on Ava Hickerson's home run.



Hazel Sharpe pitched seven innings for the Dragons in their 4-2 loss to Taylor County Thursday night.

gan—0 of 1, Kathryn Robertson—0 of 3, Kaylee Sharpe—0 of 6, Hayli Milby—0 of 11. Extra base hits: Doubles—Hargan, Hickerson, Johnson, H. Sharpe Home runs—Hickerson Last week's pitching stats: H. Sharpe—11.2 in-

nings, 22 hits, 14 runs, 3 walks, 1 strikeout. Ava Kate Sprawls—10 innings, 12 hits, 7 runs, 1 walk, 3 strikeouts. Izzy Davis—3 innings, 2 hits, 1 run, 2 walks, 1 strikeout. A complete story about the 18th District Tournament will be in next week's paper.