

M.E.S Honors Students Who Are Fair



Each week the Midland Elementary School recognizes students who display positive characteristics. Students are nominated by Midland staff each week.

This week we celebrated students who are fair. Congratulations to the latest Students of the Week.

Pictured in back from left to right: Londyn Fandel, Holly Van Zandt, Ruby Keyes, Blake Pufahl, Lawren Craig, Diana Davis, Kaycie Endress and Addison Culver. Front row: Murphy Dunlap, Cora Merriken, Aliie Wigand, Jackson Shadday and Zakary Lange.



Pre-K AM: Drake Folynewicz



Pre-K AM: Jayse Storm



Pre-K PM: Raelynn Iliff



PAWS SOTW: Journey Forbes

Meet & Greet

(From Toluca Front Page)
March 17.

If you received a vote by mail ballot, and changed your mind and want to vote in person, you MUST bring your mail-in ballot to the polling place and turn it in. The judges will "spoil" the mail-in ballot, and give you a new ballot to vote on site.

Reminder, if you do vote by mail, please allow several extra days for the mail to deliver your ballot to the County Clerk. The USPS has changed some processing procedures. Allow extra time, or walk in to your post office and ask the window clerk to hand cancel your ballot to guarantee the date is before March 17. Or, there is a drop box at the door of the Marshall County Court House in Lacon.

Court News

(From Toluca Front Page)
Gatzemeyer, Tammy Ripp, Sherri Rogers. Grantee: George Ballard II, Remah Ballard. Hopewell Estates Lot 269, Warranty Deed.

Grantor: Marshall County Clerk. Grantee: JICTB Inc. Sycamore Bay, Lot 2. Tax Deed.

Grantor: Daryl Carnell, Laura Carnell. Grantee: Jennifer S. Ugasco. Henry (Original Town) Lot 256, Ex Pt. Henry (Original Town) Lot 231, Ex Pt. Henry (Original Town) Lot 263. Warranty Deed.

Grantor: AJR MD Consulting LLC. Grantee: Utley-Dixon Family Farms LLC. Section 14, Township 29N, Range 3W, Govt Lot --NE, Notes Pt. Section 14, ,29N, 3W,

Applications For Local Scholarships Available For Henry-Sen. Seniors

Several college scholarships, of local nature, are available for high school senior students in the Henry-Senachwine School District. The Henry Chamber Scholarship committee is announcing that the applications for these scholarships are available now from the office of the Guidance Counselor at Henry-Senachwine High School. The applications must be obtained from the Guidance Office by the senior student or his/her parent. The application is to be completed and returned to that office by no later than April 8, 2026. These scholarships include the Dewey Family Scholarship, the Finfgeld Family Scholarship and the Henry Chamber of Commerce Scholarships. Both the Dewey and the Finfgeld are endowed by the respective families from the Henry Community. The Chamber of Commerce are sponsored by the local Henry Chamber.

The Dewey Scholarship is for H.S. senior student who plans to attend a four-year college or university. It is a \$1,000 award

per year renewable for four years. The Finfgeld is for a HSHS Class of 2026 graduate who is planning on attending the community colleges of Illinois Central and Illinois Valley or other two-year community colleges in the central area of Illinois such as Carl Sandberg, Blackhawk, etc. It is an award of \$1,500 each year for two years as the student remains in full and good standing at the community college. The Henry Chamber of Commerce Scholarship is given as a one-time award of \$1,000 to each the valedictorian and salutatorian of the graduating class of HSHS.

The Henry Scholarship Program has been operating consistently for many years for the benefit of students in the local high school, Henry-Senachwine. The operation of the program is administered by the Henry chamber Scholarship Committee composed of members from the high school staff and members from the community reflecting the interests of the families and the organization associated with the scholarships.

CRACKS IN THE BASEMENT?

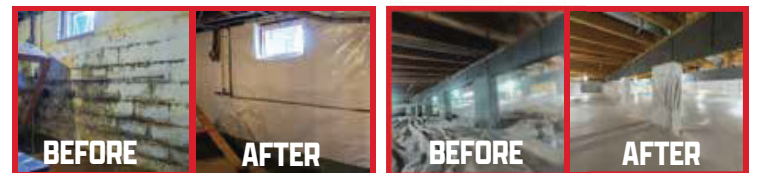
WE CAN HELP WITH THAT!



CALL 888-385-0163

WE CAN HELP WITH

- BASEMENT WATERPROOFING
- FOUNDATION REPAIR
- SUMP PUMP INSTALLATION
- HOME INSPECTIONS
- CRAWL SPACE ENCAPSULATION
- CONCRETE LEVELING



EASY FINANCING OPTIONS AVAILABLE!

CALL TODAY TO SCHEDULE A FREE ESTIMATE!

Kennell's Meat

LOCAL BEEF

Whole ♦ Halves ♦ Quarters
Ribeye ♦ T-Bone ♦ Hamburger

We Have Most Cuts Available

Home Phone (309) 248-7355
Don's Cell (309) 696-8634 Bill's Cell (309) 696-0492

LIVE ONLINE

WOODFORD COUNTY, IL LAND AUCTION

THURSDAY, MARCH 26, 2026 AT 1:00 PM^{CT}

137.66 ACRES± (SUBJECT TO SURVEY) 2 TRACTS

Tract 1 is located 1 ½ miles south of Metamora, IL on the west side of Washington blacktop. Tract 2 is located ½ mile west of Metamora, IL on south side of State Route 116 in Sections 24 & 25, T27N-R3W, Worth Township and Section 30, T27N-R2W, Metamora Township, Woodford County, Illinois.

Farmers & Investors, don't miss out on this productive, well drained, all tillable farm that is selling in 2 tracts with an open lease for 2026!

LELAND L. KLEIN TRUST

Representing Attorney: Thomas R. Steele | (317) 587-7829
Robinson, Farthing, Spandau, Williams Law Office
8500 Keystone Crossing Suite 470, Indianapolis, IN 46240

Auction Managers: Eric Ifft (309) 825-3730
& Kevin Haas (309) 264-7767

(844) 847-2161

www.SullivanAuctioneers.com
License #444000566

PETS OF THE WEEK

For more information call The A.R.K.
477 State Route 26,
Lacon, at 309-246-4275,
or email us at
arkanimalshelter@yahoo.com.



Elias

Six-month old Elias is still just a puppy!!! He has a lovely personality, is friendly with everyone and gets along well with other dogs. This handsome boy is a Border Collie mix who only weighs about 37 pounds, and he is neutered, micro-chipped and current on all his shots.



Gravy

Gravy is a super social eleven-month old kitten. She is friendly and affectionate with everyone, human or feline, and even loves to have kids carry her around. She gets along great with all her kitty friends in Molly's room, and will be a wonderful companion for some lucky person or family. Gravy is spayed, micro-chipped and current on all her shots.

HEINEKE ELECTRIC

Electrical Contracting

APPLIANCES

Maytag ♦ Amana
Westinghouse ♦ RCA
Quasar ♦ Tappan ♦ Zenith

WE SERVICE
WHAT WE SELL!

BENSON, IL
PH. (309) 394-2616